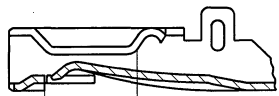


1

2

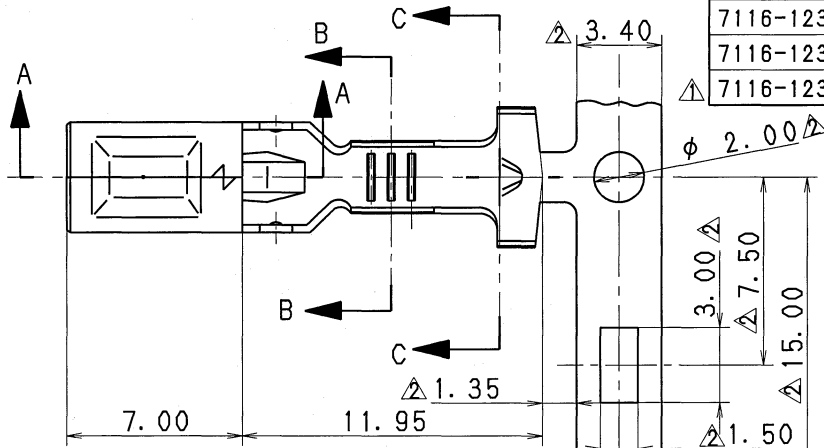
3

PART NO. AND CH. CODE	APPLICABLE WIRE SIZE	W <sub>1</sub>	H <sub>1</sub>	W	H	TREATMENT
7116-1232	0.3~0.85	5.60	5.10	2.90	2.20	Sn PLATING
7116-1233	1.25~2	6.00	5.60	3.80	3.60	Sn PLATING
7116-1232-08	0.3~0.85	5.60	5.10	2.90	2.20	NOTE 2
7116-1233-08	1.25~2	6.00	5.60	3.80	3.60	NOTE 2



3.70 (S)部

SEC. A-A



7.00

11.95

1.35

3.40

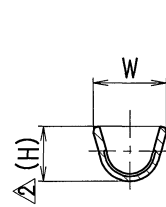
φ 2.00

3.00

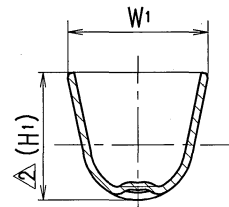
7.50

15.00

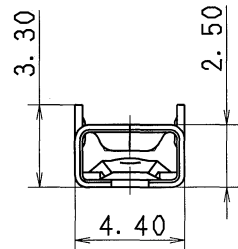
1.50



SEC. B-B



SEC. C-C



△(18.95)

△7.60

△4.30

△0.70

1.30

1.80

0.30

1.30

注記

△ 1. かん合相手品番: 7114-1232 ETC., 7114-1233 ETC.

△ 2. Auメッキ範囲は (S) 部とする。(7116-1232-08, 7116-1233-08)

△ NOTES

1. MATING PART NO. : 7114-1232 ETC.,  
7114-1233 ETC.

2. THE INSIDE OF AREA (S) SHALL BE  
GOLD PLATING. (7116-1232-08, 7116-1233-08)

ISSUE MARK

△ 13.07.02	ADDED GENERAL TOLERANCE, ETC.	C13-Z297	R. M	CUSTOMER	MATL. BRASS	TREAT. SEE TABLE
△ 88.10.25	誤記訂正	8MC-1432	鈴掛	CUSTOMER PART NO.	SPEC. t=0.30	& FIN. SEE TABLE
88.01.20	差換え図作成及び品番追加	8MC-0124	鈴掛	CUSTOMER DWG NO.	NAME W TYPE TERMINAL (F)	
LET	DATE	REVISION RECORD	NO.	OFFICE	VENDOR	
△ GENERAL TOLERANCE				VENDOR NO.	PART NO. 7116-1232 ETC.	
A	±0.15	±0.2	±0.3	DWG TYPE R	DWG DATE 88.01.20	CH. CODE
B	±0.2	±0.3	±0.55	ANGLE ±30'	UNIT mm	SC1 5:1
◎	±0.3	±0.5	±0.8	ECCENT 0.1	APPROVED	DESIGN
SPECIFIED				MASS	CHECKED	DRAWN
13.07.02				M. KASHIYAMA	CHECKED	SAKAI R. MAJERANO
13.07.02				13.07.02	84.06.26	13.07.02

1

2

3

