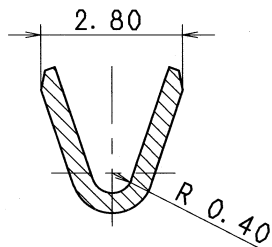
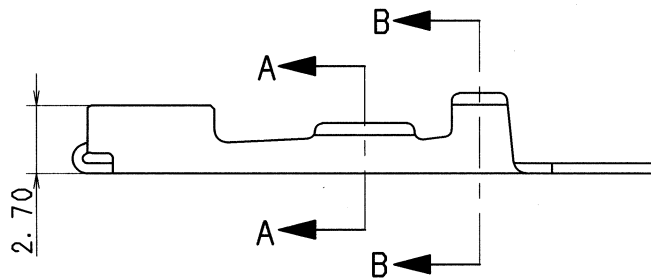
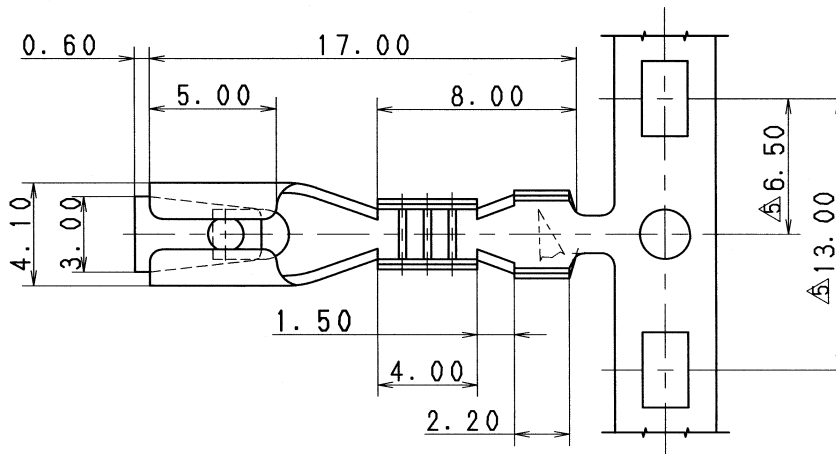


SEC. B-B (10/1)



SEC. A-A (10/1)



注記

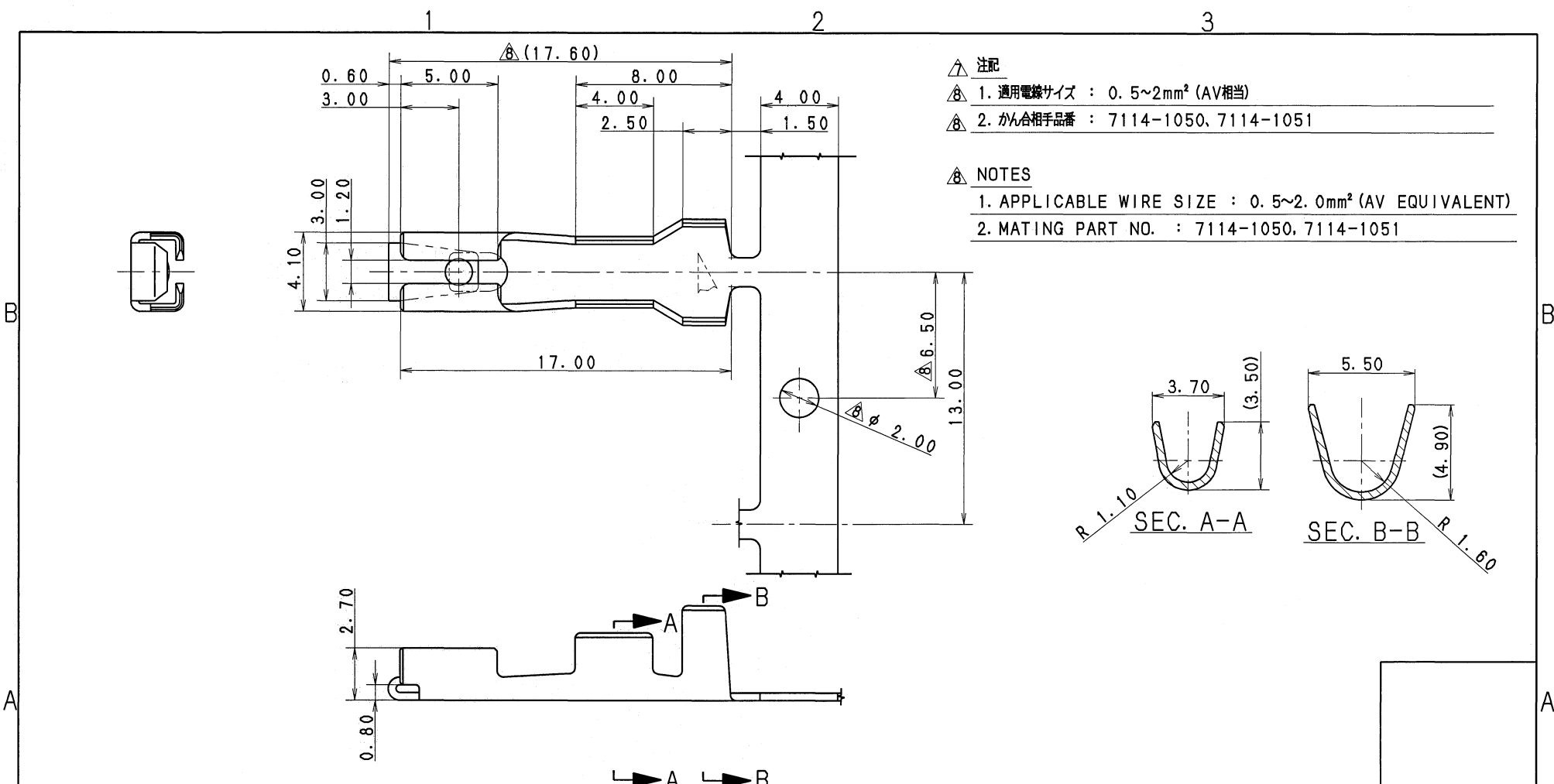
- 1. 嵌合相手端子 : 7114-1050, 7114-1055
- 2. 適用電線サイズ : AVS 0.2 ~ AV 0.5 とする。

△ NOTES

- 1. MATING TERMINAL NO. : 7114-1050, 7114-1055
- 2. APPLICABLE WIRE SIZE : AVS 0.2 ~ AV 0.5

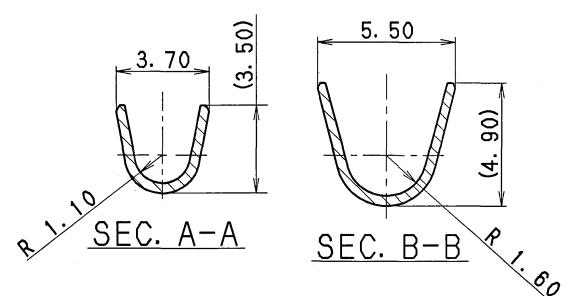
ISSUE MARK

				CUSTOMER				MATERIAL: △ BRASS (t=0.40)				TREAT. & FIN.				
				CUSTOMER PART NO.				SPEC. TIN PLATING								
△ 07.03.23 CHANGED DIMENSION, ETC.				C07-Z193 H. T				NAME △ PA TERMINAL FEMALE								
△ 94.05.30 RENEW				C94-L005 N. S				OFFICE				TRIAL PART NO.				
LET DATE REVISION RECORD				NO. CHKD				VENDOR								
GENERAL TOLERANCE												VENDOR NO.				
	10MAX	50MAX	100MAX	250MAX	250OVR	ANGLE	ECCENT	DWG TYPE	DWG SOURCE	DWG DATE	UNIT	SCL	ANGLE	PART NO.	7116-1055	
A	±0.15	±0.2	±0.3	±0.5	±0.75	±30'	0.1	R	RENEW	94.05.30	mm	5/1	3	CH. CODE	7116-1055:R	
B	±0.2	±0.3	±0.55	±0.95	±1.4	±30'	0.1	APPROVED	CHECKED	CHECKED	DESIGN	DRAWN		DWG NO.	7116-1055:R	
©	±0.3	±0.5	±0.8	±1.4	±2	±30'	0.15	M. Yamashita	T. Miwa	H. Tashiro	USUI	M. ADRIANO		YAZAKI CORPORATION		
SPECIFIED							MASS	g		07.3.26	07.03.23	07.03.23	81.12.25	07.03.23		



△ 注記
 △ 1. 適用電線サイズ : 0.5~2mm² (AV相当)
 △ 2. かん合相手品番 : 7114-1050, 7114-1051

△ NOTES
 1. APPLICABLE WIRE SIZE : 0.5~2.0mm² (AV EQUIVALENT)
 2. MATING PART NO. : 7114-1050, 7114-1051



ISSUE MARK

△	2013/08/29	ADDED NOTES, ETC.	C13-Z302	E. I	CUSTOMER	MATL. SPEC.	BRASS t=0.4	TREAT. & FIN.	TIN PLATING						
△	1986/07/15	追加	C86-5855	柳	CUSTOMER PART NO.	NAME PA TERMINAL FEMALE									
△	1975/12/18	形状	C75-0413	T. H	CUSTOMER DWG NO.	PART NO. 7116-1050									
△	1974/11/20	カス部処理	C74-0797	キムラ	OFFICE	CH. CODE 7116-1050:R									
△	1974/11/20	カス部処理	C74-0797	キムラ	TRIAL PART NO.	DWG NO. 7116-1050:R									
LET	DATE	REVISION RECORD	NO.	CHKD	VENDOR	SET DWG NO.									
△ GENERAL TOLERANCE					VENDOR NO.										
	10MAX	50MAX	100MAX	250MAX	2500VR	ANGLE	ECCENT	DWG TYPE	DWG SOURCE	DWG DATE	UNIT	SCL	ANGLE	PART NO.	
A	±0.15	±0.2	±0.3	±0.5	±0.75	±30'	0.1	R	NEW	1973/05/31	mm	5:1	3	7116-1050	
B	±0.2	±0.3	±0.55	±0.95	±1.4	±30'	0.1	APPROVED	CHECKED	CHECKED	DESIGN	DRAWN			
(C)	±0.3	±0.5	±0.8	±1.4	±2	±30'	0.15	M. FUKUDA	M. NAGANO		KIMURA	E. ITALIA			
SPECIFIED					MASS	2013/08/29					2013/08/29				
						2013/08/29					2013/08/29				

YAZAKI CORPORATION