

1

2

3

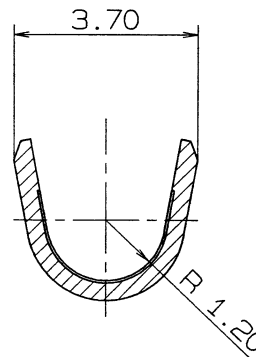
PART NO.	MATERIAL	REFERENCE
7115-1050	BRASS (t=0.4)	—
7115-1050-02		TIN PLATING

注記

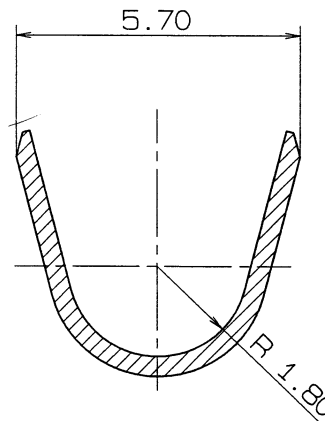
- 1. 嵌合相手品番: 7113-1020
- 2. 適用電線サイズ: AV0.5~2mm²

NOTES

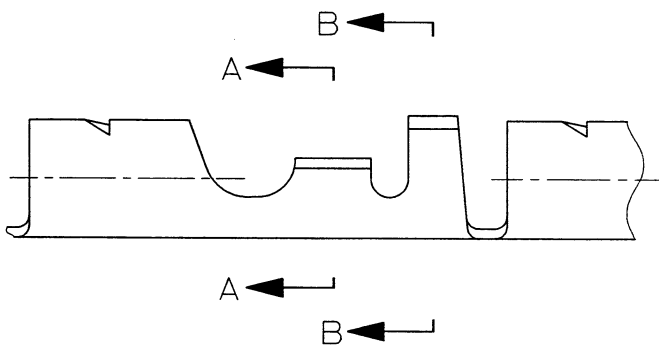
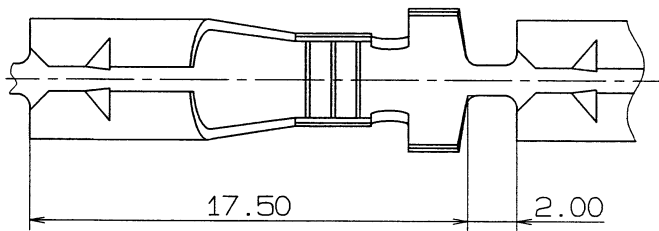
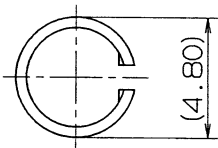
- 1. MATING PART NO.: 7113-1020
- 2. APPLICABLE WIRE SIZE: AV0.5~2mm²



SEC. A-A (10/1)



SEC. B-B (10/1)



ISSUE MARK

				CUSTOMER		MATERIAL SPEC.		TREAT. & FIN.							
				CUSTOMER PART NO.		CUSTOMER DWG NO.		NAME							
▲	97.11.12	CAD DRAW	C97-N421	M.T			リセブタクル								
	89.07.07	NEW	C89-7057	※	OFFICE		TRIAL PART NO.								
LET	DATE	REVISION RECORD	NO.	CHKD	VENDOR		-----								
GENERAL TOLERANCE				VENDOR NO.											
	10MAX	50MAX	100MAX	250MAX	2500V	ANGLE	ECCENT	DWG TYPE	DWG SOURCE	DWG DATE	UNIT	SCL	ANGLE	PART NO.	
A	±0.15	±0.2	±0.3	±0.5	±0.75	±30°	0.1	M	NEW	97.11.12	mm	5/1	3	7115-1050 ETC.	
B	±0.2	±0.3	±0.55	±0.95	±1.4	±30°	0.1	APPROVED	CHECKED	CHECKED	DESIGN	DRAWN		7115-1050: R	
◎	±0.3	±0.5	±0.8	±1.4	±2	±30°	0.15				HANDA	IMAI		SET DWG NO.	
SPECIFIED				MASS		g		-97.11.20		97.11.14	97.11.14	89.07.07	97.11.12	YAZAKI CORPORATION	

1

2

3

