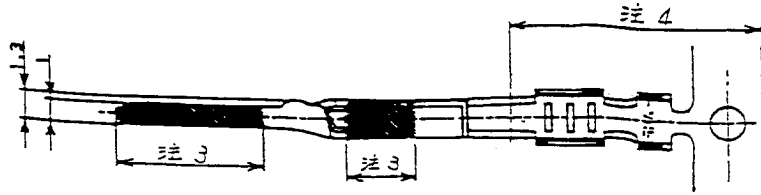


1

2

3

PART NO.	MATERIAL
7114-4239-08 (7B14-4239-08)	BRASS SELECTIVE GOLD/TIN PLATE
7114-4239-02 (7B14-4239-02)	BRASS PRE TIN

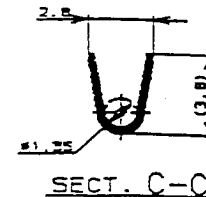
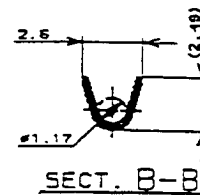
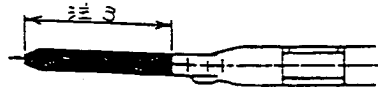
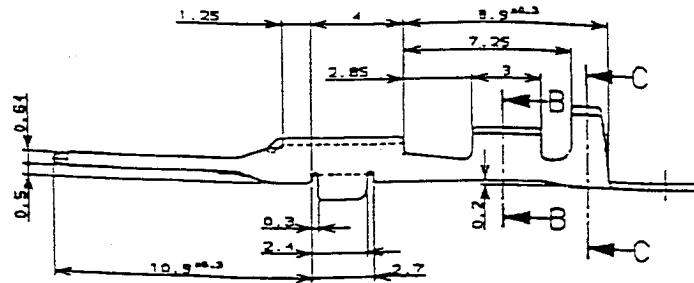
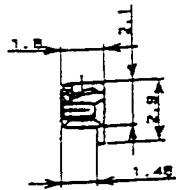


注記

- 適用電線サイズ: AVSS, CAVS 0.3~0.5
- () 内品番は、エアバック回路 (A/B) 及び特別管理回路に使用する時に適用すること。
- 金のめっき範囲<7114-4239-08のみ>
- 半田のめっき範囲<7114-4239-08のみ>

NOTES

- APPLICABLE WIRE SIZE: AVSS, CAVS 0.3~0.5
- PART NUMBERS IN PARENTHESIS SHALL BE USED FOR AIR BAG (A/B) CIRCUITS AND OTHER CIRCUITS DESIGNATED FOR SPECIAL MONITORING.
- AU PLATING AREA <7114-4239-08>
- SOLDER DIPPING AREA <7114-4239-08>



ISSUE MARK

		CUSTOMER		MATERIAL		TREAT. & FIN.		
		CUSTOMER PART NO.		CUSTOMER DWG NO.		SPEC. SEE TABLE		
97.11.20	NEW	C97-N362	M.T	OFFICE	TRIAL PART NO.	NAME 040Ⅲ UNSEALED CONTACT,		
LET	DATE	REVISION RECORD	NO.	CHKD	VENDOR	TAB (S)		
GENERAL TOLERANCE								
	10MAX	50MAX	100MAX	250MAX	2500VFR	ANGLE	ECCENT	
A	±0.15	±0.2	±0.3	±0.5	±0.75	±30'	0.1	
B	±0.2	±0.3	±0.55	±0.95	±1.4	±30'	0.1	
©	±0.3	±0.5	±0.8	±1.4	±2	±30'	0.15	
SPECIFIED							MASS	9
		加藤		山梨		福		
		97.11.25		97.11.24		97.11.24		
				SUGIYAMA		杉山達		
				97.11.20				
PART NO. 7114-4239-02 (7B14-4239-02) ETC.						CH. CODE		
DWG NO. 7114-4239-02: R						SET DWG NO.		
YAZAKI CORPORATION								

1

2

3