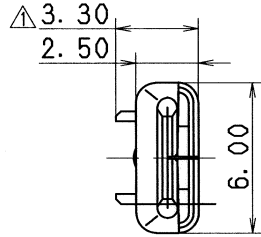


PART NO. AND CH. CODE	$\Delta W_1 \pm 0.4$	$\Delta W_2 \pm 0.4$	ΔH_1	ΔH_2	ΔX	WIRE SIZE
7114-4035	2.90	5.40	(2.62)	(4.52)	0.40	AVS 0.3~AVS 0.5 EQUIVALENT
7114-4036	3.60	5.70	(3.34)	(4.38)	0.60	AVS 0.5~AVS 1.25 EQUIVALENT
7114-4037	4.90	6.90	(4.63)	(5.42)	0.80	AVS 2.00~AVS 3.00 Δ AVX 3.00 EQUIVALENT

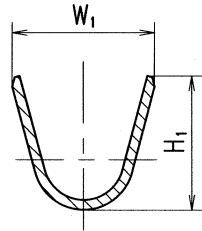


Δ 注記

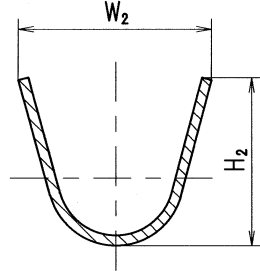
1. 嵌合相手品番 : 7116-4035 ETC.
2. 適用工具品番 : 7158-3014-90 ETC.

Δ NOTES

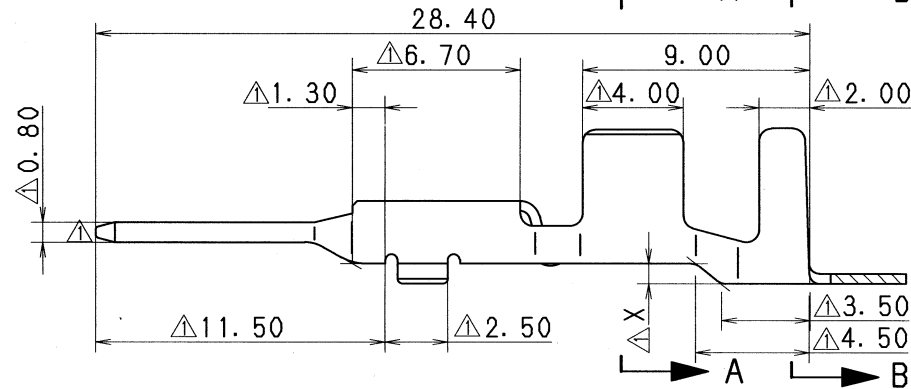
1. MATING PART NO. : 7116-4035 ETC.
2. APPLICABLE RUBBER STOPPER NO. : 7158-3014-90 ETC.



Δ SEC. A-A



Δ SEC. B-B



Δ 07.05.07	CHANGED APPLICABLE WIRE SIZE, ETC.	C07-Z341	T. H	CUSTOMER				MATL. SPEC.	Δ BRASS (t=0.40)	TREAT. & FIN.	TIN PLATING	ISSUE MARK				
Δ 98.07.18	CHANGED FORM, NAME & ADDED DIMENSION, NOTES	C97-N461	H. K	CUSTOMER PART NO.				CUSTOMER DWG NO.		NAME Δ 4.8 SEALED TERMINAL MALE						
88.09.27	NEW	8MC-1191	A. H	OFFICE				TRIAL PART NO.								
LET	DATE	REVISION RECORD	NO.	CHKD	VENDOR											
GENERAL TOLERANCE				VENDOR NO.												
	10MAX	50MAX	100MAX	250MAX	250OVR	ANGLE	ECCENT	DWG TYPE	DWG SOURCE	DWG DATE	UNIT	SCL	ANGLE	PART NO. CH. CODE	7114-4035 ETC.	
A	± 0.15	± 0.2	± 0.3	± 0.5	± 0.75	$\pm 30'$	0.1	R	NEW	88.09.27	mm	5/1	3	DWG NO.	7114-4035:R	
B	± 0.2	± 0.3	± 0.55	± 0.95	± 1.4	$\pm 30'$	0.1	APPROVED	CHECKED	CHECKED	DESIGN	DRAWN		SET DWG NO.		
C	± 0.3	± 0.5	± 0.8	± 1.4	± 2	$\pm 30'$	0.15	山梨 鈴木 濱井		SUEYOSHI	C. REPOLLO		YAZAKI CORPORATION			
SPECIFIED				MASS				g		07.05.09	07.05.07	07.05.07	87.03.04	07.05.07		

1

2

3