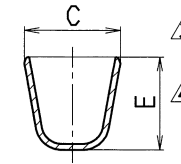
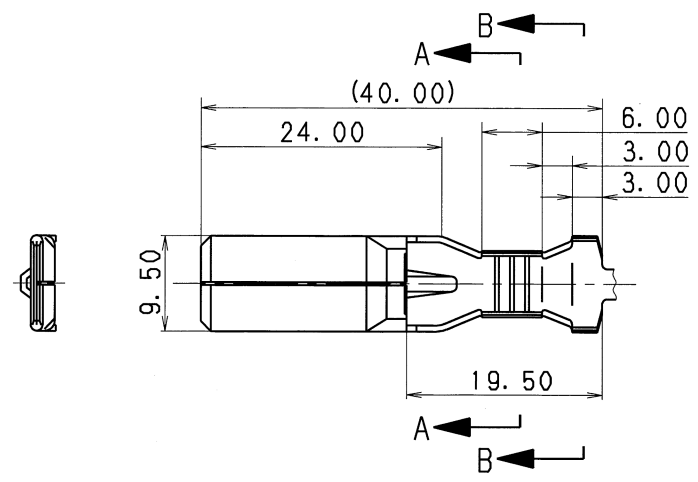


NO.	YAZAKI PART NO. AND CH. CODE	C	D	E	F	APPLICABLE WIRE	△ MASS
1	7114-3250	9.60	6.60	△(9.50)	(7.30)	△ AV 5~8, AVS 5	△(4.0 g)
2	7114-3251	7.20	4.80	△(8.70)	△(5.10)	△ AV 3, AVS 3, AVS 3f	△(3.6 g)

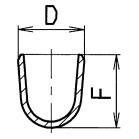
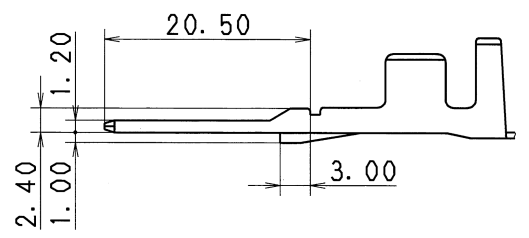


SEC. B-B

- △ 注記
1. かん合メスタ-ミナル品番 : 7116-3250 ETC.
  2. かん合コネクタ品番 : 7122-4110 ETC.  
: 7122-4310-30 ETC.

△ NOTES

1. MATING FEMALE TERMINAL PART NO. : 7116-3250 ETC.
2. MATING CONNECTOR PART NO. : 7122-4110 ETC.  
: 7122-4310-30 ETC.



SEC. A-A

△	2018/09/07	DELETED PART NO. ETC.	C18-Z097	G. M						ISSUE MARK					
△	2016/08/04	CHANGED APPLICABLE WIRE SIZE, ETC.	C16-Z607	A. O	CUSTOMER △					MATL. SPEC. △ COPPER ALLOY (t=0.6)	TREAT. & FIN. △ TIN PLATING				
△	2002/05/30	CHANGED TOLERANCE ETC.	C02-X619	K. U	CUSTOMER PART NO.					CUSTOMER DWG NO.					
△	1990/01/29	RENEW	C90-L039	H. Y	OFFICE △					TRIAL PART NO.					
LET	DATE	REVISION RECORD	NO.	CHKD	VENDOR					NAME △ L TYPE MALE TERMINAL					
GENERAL TOLERANCE					VENDOR NO.										
	10MAX	50MAX	100MAX	250MAX	2500VR	ANGLE	ECCENT	DWG TYPE	DWG SOURCE	DWG DATE	UNIT	SCL	ANGLE	PART NO. CH. CODE	7114-3250 ETC.
A	±0.15	±0.2	±0.3	±0.5	±0.75	±30'	0.1	R	NEW	1983/03/10	mm	2:1	3		
B	±0.2	±0.3	±0.55	±0.95	±1.4	±30'	0.1	APPROVED	CHECKED	CHECKED	DESIGN	DRAWN			
◎	±0.3	±0.5	±0.8	±1.4	±2	±30'	0.15	M. NAKAMURA			INABA	G. MANDERICO	DWG NO. △ 7114-3250:R SET DWG NO.		
SPECIFIED				MASS	2018/09/07					1983/03/11		2018/09/07		YAZAKI CORPORATION	
				△ SEE TABLE											