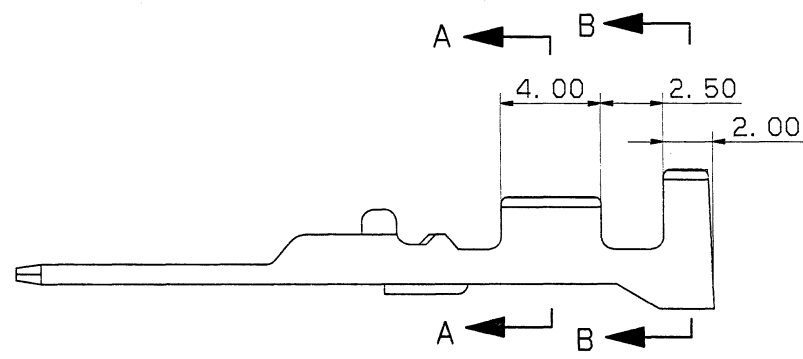
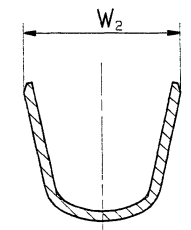
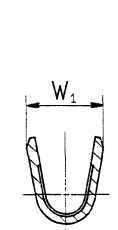
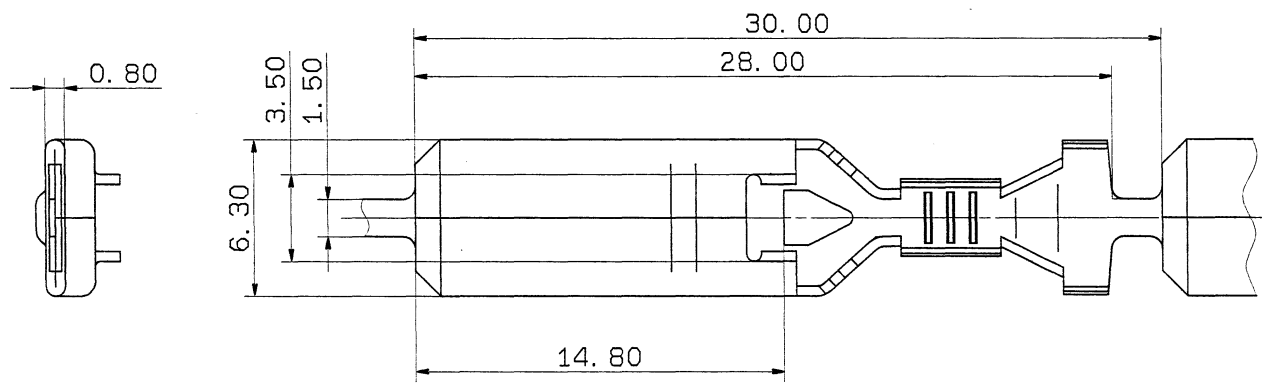


1

2

3

PART NO.	W ₁	W ₂	MATERIAL	APPLICABLE WIRE SIZE
7114-2873	3.1	6.2	C 2680 t=0.4	(AVS) AV 0.5 ~ 1.25
7114-2874	4.3	8.1		(AVS) AV 2 ~ 3
⚠ 7114-2873-02	3.1	6.2	C 2680 t=0.4 TIN PLATING	(AVS) AV 0.5 ~ 1.25
⚠ 7114-2874-02	4.3	8.1		(AVS) AV 2 ~ 3



ISSUE MARK

CUSTOMER										MATL. SPEC. SEE TABLE			TREAT. & FIN.		
CUSTOMER PART NO.					CUSTOMER DWG NO.										
OFFICE										NAME ⚠ X TYPE TERMINAL M					
VENDOR										TRIAL PART NO.					
GENERAL TOLERANCE										VENDOR NO.					
	10MAX	50MAX	100MAX	250MAX	2500VR	ANGLE	ECCENT	DWG TYPE	DWG SOURCE	DWG DATE	UNIT	SCL	ANGLE	PART NO. 7114-2873 ETC.	
A	±0.15	±0.2	±0.3	±0.5	±0.75	±30'	0.1	R	RENEW	91.12.10	mm	5/1	3		
B	±0.2	±0.3	±0.55	±0.95	±1.4	±30'	0.1	APPROVED	CHECKED	CHECKED	DESIGN	DRAWN	DWG NO. 7114-2873:R		
©	±0.3	±0.5	±0.8	±1.4	±2	±30'	0.15	MAKITA		ISHIZUKA		YAZAKI CORPORATION			
SPECIFIED					MASS					88.04.14		91.12.10			

1

2

3