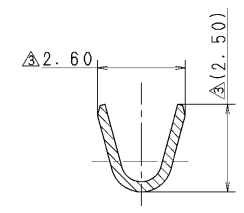
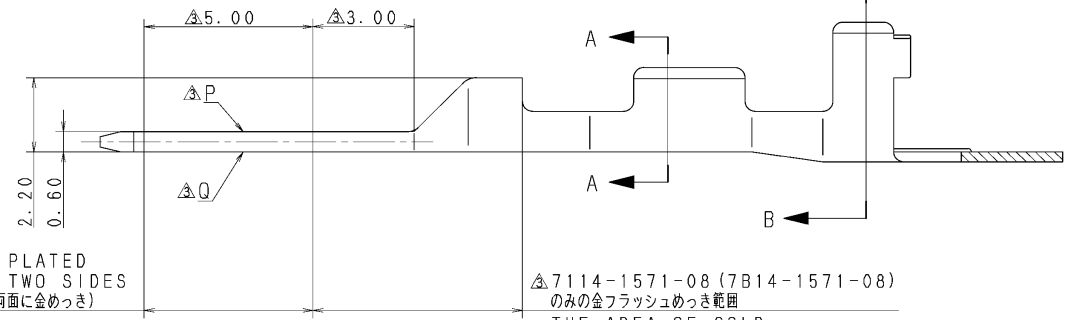
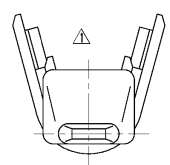


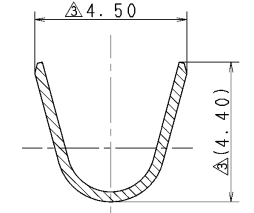
PART NO. AND CH. CODE	TREAT. & FIN.	MATING PART NO.
7114-1471 △(7B14-1471)	TIN PLATING	7116-1471 (7B16-1471)
7114-1471-08 (7B14-1471-08)	GOLD PLATING	7116-1471-08 (7B16-1471-08)
7114-1571-08 (7B14-1571-08)	GOLD PLATING	7116-1571-08 (7B16-1571-08)

- △ 注記
1. 適用電線サイズ : CAVS 0.3~AVS 0.85相当
  2. 適用ゴム径品番 : 7157-3271-60 ETC.
  3. かん合相手品番 : SEE TABLE
  4. ( ) 内品番は、エアバッグ(A/B)回路及び特別管理回路に使用する時に適用すること。

- △ NOTES
1. APPLICABLE WIRE SIZE :  
CAVS 0.3~AVS 0.85 OR EQUIVALENT
  2. APPLICABLE RUBBER SEAL PART NO. :  
7157-3271-60 ETC.
  3. MATING PART NO. : SEE TABLE
  4. PART NUMBERS IN PARENTHESIS SHALL BE USED FOR AIR BAG (A/B) CIRCUITS AND OTHER CIRCUITS DESIGNATED FOR SPECIAL MONITORING.



SEC. A-A



SEC. B-B

△ GOLD PLATED  
: P, Q TWO SIDES  
(P, Q 両面に金めっき)

△ 7114-1571-08 (7B14-1571-08)  
のみの金フラッシュめっき範囲  
THE AREA OF GOLD  
FLASH PLATED FOR  
7114-1571-08  
(7B14-1571-08) ONLY

ISSUE MARK

REV	DATE	REVISION RECORD	NO.	CHKD
△	10.11.30	ADDED PART NO. ETC.	C10-2369	T. W
△	89.04.12	ADDED ENGLISH NOTES.	C89-6582	矢部
△	87.06.12	ADDED LARGE SIZE TRM.	7MC-0272	S. Y
	86.06.02	NEW	C86-0548	S. K

GENERAL TOLERANCE							
	10MAX	50MAX	100MAX	250MAX	2500VR	ANGLE	ECCENT
A	±0.15	±0.2	±0.3	±0.5	±0.75	±30'	0.1
B	±0.2	±0.3	±0.55	±0.95	±1.4	±30'	0.1
◎	±0.3	±0.5	±0.8	±1.4	±2	±30'	0.15
△	SPECIFIED MASS						

CUSTOMER		MATL. SPEC.	TREAT. & FIN.	
CUSTOMER PART NO.	CUSTOMER DWG NO.	△ BRASS (t=0.3)	△ SEE TABLE	
OFFICE	STDLIB NO.	NAME SWP TYPE TERMINAL M		
VENDOR	VENDOR NO.	PART NO. △ 7114-1471 ETC. (7B14-1471 ETC.)		
DWG TYPE	DWG SOURCE	DWG DATE	DWG NO. 7114-1471:R	
R △	NEW	86.06.02	SET DWG NO.	
APPROVED	CHECKED	CHECKED	YAZAKI CORPORATION	
H. KONDO	K. SUZUKI	T. WATANABE	S. YAMADA	J. GALLARES
10.11.30	10.11.30	10.11.30	86.05.27	10.11.30

