

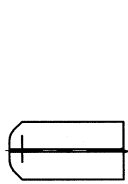
注記

△ 1) () 内品番はA/B回路及び特別管理回路に使用すること。

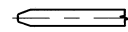
NOTE

△ 1) PART NUMBERS IN PARENTHESIS SHALL BE USED FOR AIR BAG (A/B) CIRCUITS AND OTHER CIRCUITS DESIGNATED FOR SPECIAL MONITOR.

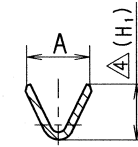
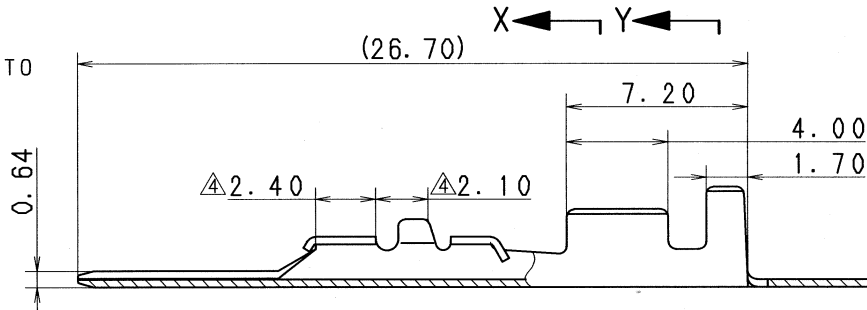
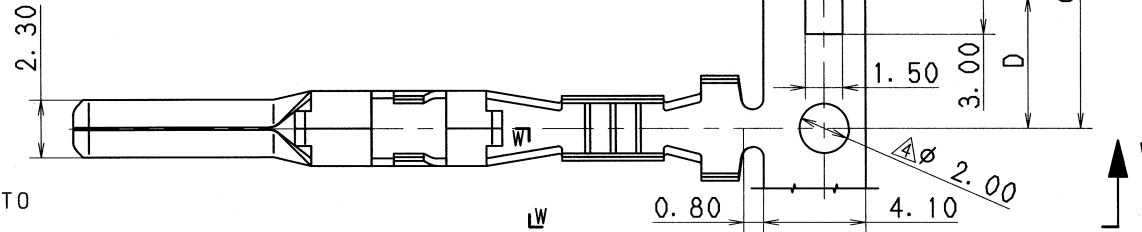
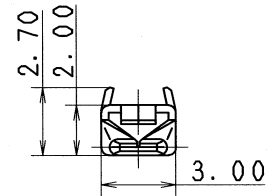
PART NO. AND CH. CODE	A	B	C	D	△(H ₁)	△(H ₂)	WIRE SIZE
7114-1170 △(7B14-1170)	2.50	3.70	△10.50	△5.25	2.22	3.37	AVS 0.2~0.5 EQUIVALENT
7114-1171 △(7B14-1171)	3.70	4.20	10.50	5.25	2.93	4.08	AVS 0.85~1.25 EQUIVALENT



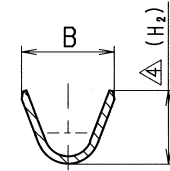
THIS FORM IS APPLIED TO
△ 7114-1170 (7B14-1170)



THIS FORM IS APPLIED TO
△ 7114-1170 (7B14-1170)



SEC. X-X



SEC. Y-Y

SEC. W-W

△	DATE	REVISION RECORD	NO.	CHKD
△	07/03/20	CHANGED DIMENSION	C07-Z208	H. T
△	06/02/23	CHANGED PART NAME, ETC.	C06-Z185	H. T
△	89/10/25	CHANGED FORM	C89-M107	M. H
△	89/08/05	CHANGED FORM	C89-7253	M. H
△	89/02/21	CHANGED NOTE	C89-6287	K. M
△	85/02/26	NEW	C85-5204	T. Y

CUSTOMER		MATL. SPEC.	△ BRASS (t=0.3)	TREAT. & FIN.	△ TIN PLATING
CUSTOMER PART NO.		NAME △ 2.3 TERMINAL MALE			
OFFICE		ISSUE MARK			
VENDOR		MATERIAL SPEC.			
VENDOR NO.		NAME			
DWG SOURCE		TRIAL PART NO.			
DWG DATE		VENDOR			
UNIT		VENDOR NO.			
SCL		MATERIAL SPEC.			
ANGLE		NAME			

GENERAL TOLERANCE	10MAX	50MAX	100MAX	250MAX	2500VR	ANGLE	ECCENT	
A	±0.15	±0.2	±0.3	±0.5	±0.75	±30'	0.1	
B	±0.2	±0.3	±0.55	±0.95	±1.4	±30'	0.1	
△(C)	±0.3	±0.5	±0.8	±1.4	±2	±30'	0.15	
SPECIFIED							MASS	g

APPROVED	CHECKED	CHECKED	DESIGN	DRAWN	PART NO.	△ 7114-1170 ETC. (7B14-1170 ETC.)
山梨	三輪	田代	KANEKO	C. AGCAOILLI	DWG NO.	7114-1170:R
07.03.20	07.03.20	07.03.20	81/07/31	07/03/20	SET DWG NO.	
YAZAKI CORPORATION						