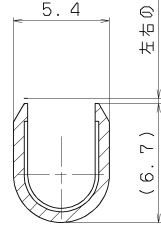
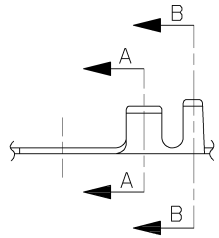
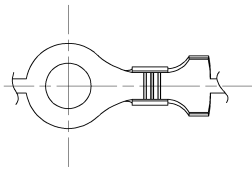
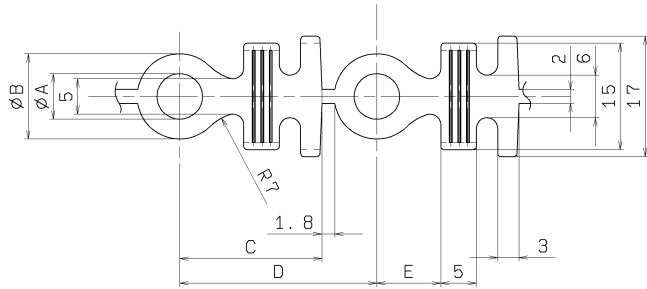
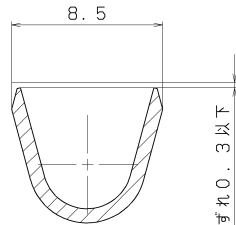


10MAX ±0.4	50MAX ±0.6	100MAX ±1	250MAX ±2	250OVR ±2.5	ANGLE ±1°	ECCENT 0.1
---------------	---------------	--------------	--------------	----------------	--------------	---------------



SEC. A-A(10:1)



SEC. B-B(10:1)

左右のずれ0.3以下

左右のずれ0.3以下

GENERAL TOLERANCE						
10MAX	50MAX	100MAX	250MAX	250OVR	ANGLE	ECCENT
A ±0.15	±0.2	±0.3	±0.5	±0.75	±30°	0.1
B ±0.2	±0.3	±0.55	±0.95	±1.4	±30°	0.1
C ±0.3	±0.5	±0.8	±1.4	±2	±30°	0.15
SPECIFIED					MASS	SEE TABLE g
SEE TABLE						

部番	JIS呼び	A	B	C	D	E	適用ネジ	適用電線	備考	△ MASS(g)
7009-1330	LA203	3.3	7	17	22.3	6	3	△1.6~3mm <sup>2</sup>		1.2
7009-1333	LA206	6.4	12	20	27.8	9	6	△1.6~3mm <sup>2</sup>		1.7
7009-1334	LA208	8.4	16	22	31.8	11	8	△1.6~3mm <sup>2</sup>		2.0
7009-1335	LA210	10.4	20	24	35.8	13	10	△1.6~3mm <sup>2</sup>		2.7
7009-1336	LA204	4.4	8	18	23.8	7	4	△1.6~3mm <sup>2</sup>		1.8
7009-1337	LA205	5.4	10	19	25.8	8	5	△1.6~3mm <sup>2</sup>		1.5
7009-1338		4.4	12	20	27.8	9	4	△1.6~3mm <sup>2</sup>		1.8
7009-1791		6.4	16	22	31.8	11	6	△1.6~3mm <sup>2</sup>		1.7
7009-1333-02	LA206	6.4	12	20	27.8	9	6	△1.6~3mm <sup>2</sup>	Snメッキ	1.7
7009-1334-02	LA208	8.4	16	22	31.8	11	8	△1.6~3mm <sup>2</sup>	Snメッキ	2.0
7009-1335-02	LA210	10.4	20	24	35.8	13	10	△1.6~3mm <sup>2</sup>	Snメッキ	2.7
7009-1336-02	LA204	4.4	8	18	23.8	7	4	△1.6~3mm <sup>2</sup>	Snメッキ	1.8
7009-1337-02	LA205	5.4	10	19	25.8	8	5	△1.6~3mm <sup>2</sup>	Snメッキ	1.5
7009-1337-04	LA205	5.4	10	19	25.8	8	5	△1.6~3mm <sup>2</sup>	Niメッキ	1.5
7009-1338-02		4.4	12	20	27.8	9	4	△1.6~3mm <sup>2</sup>	Snメッキ	1.8
7009-1330-02	LA203	3.3	7	17	22.3	6	3	△1.6~3mm <sup>2</sup>	Snメッキ	1.2

4	04.09.08	CHANGED APPLICABLE WIRE SIZE, etc.	CD4-11B1	T. M
LET	DATE	REVISION RECORD	NO.	CHKD

CUSTOMER		MATERIAL SPEC.		TREAT. & FIN.	
CUSTOMER PART NO.		C2801R 1/4H		RUST PROOF	
CUSTOMER DWG NO.		t=0.78			
OFFICE		NAME		LA TERMINAL	
VENDOR		TRIAL PART NO.			
VENDOR NO.					
DWG TYPE	DWG SOURCE	DWG DATE	UNIT	SCL	ANGLE
R	RENEW	87.04.20	mm	2:1	3
APPROVED	CHECKED	CHECKED	DESIGN	DRAWN	
I. NOMURA	H. YAMANASHI	T. TEZUNA		T. MATSUDAIRA	
PART NO. 7009-1330 ETC.				CH. CODE	
DWG NO. 7009-1330:R				SET DWG NO.	
YAZAKI CORPORATION					
04.09.08					