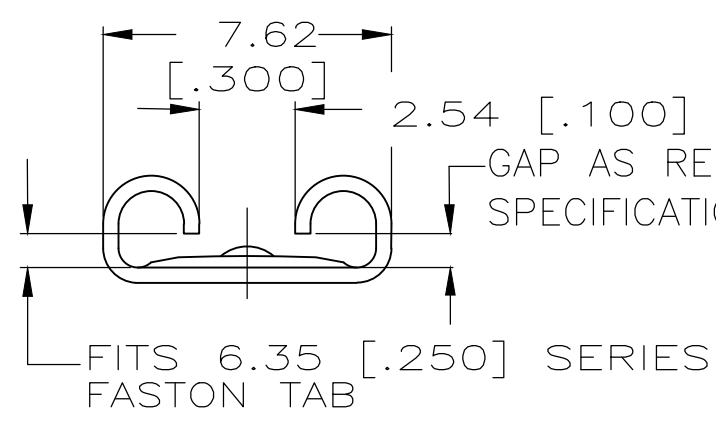
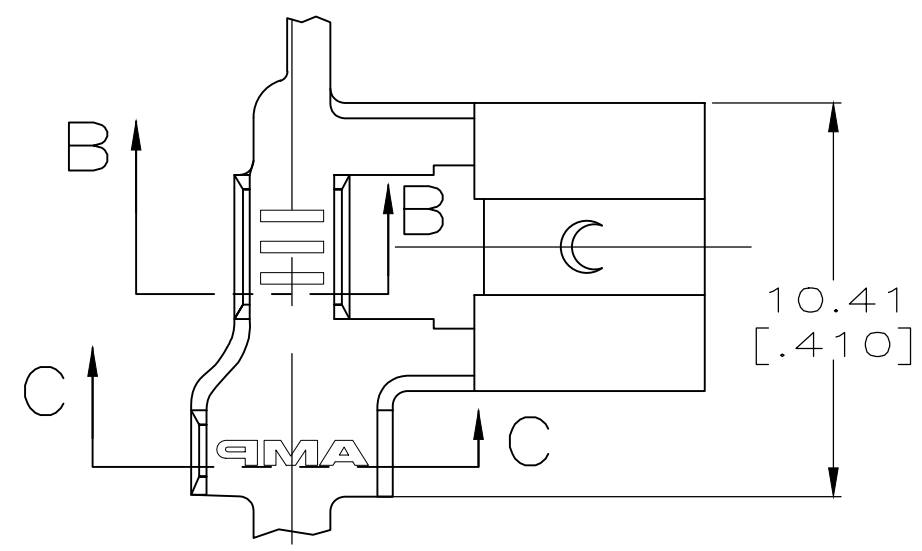


THIS DRAWING IS UNPUBLISHED. RELEASED FOR PUBLICATION
 © COPYRIGHT - By - ALL RIGHTS RESERVED.

LOC	DIST	REVISIONS					
AF	50	P	LTR	DESCRIPTION	DATE	DWN	APVD
			F1	REVISED PER ECR-20-009164	28JUL2020	MK	DH

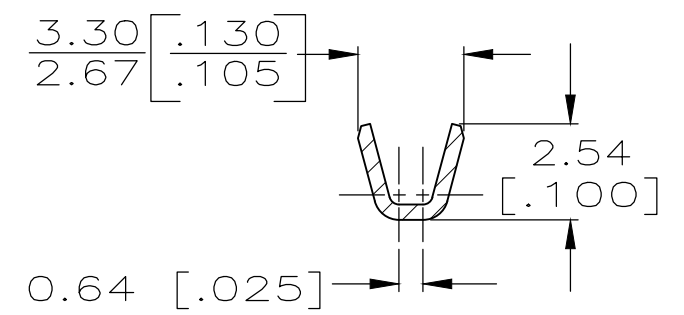
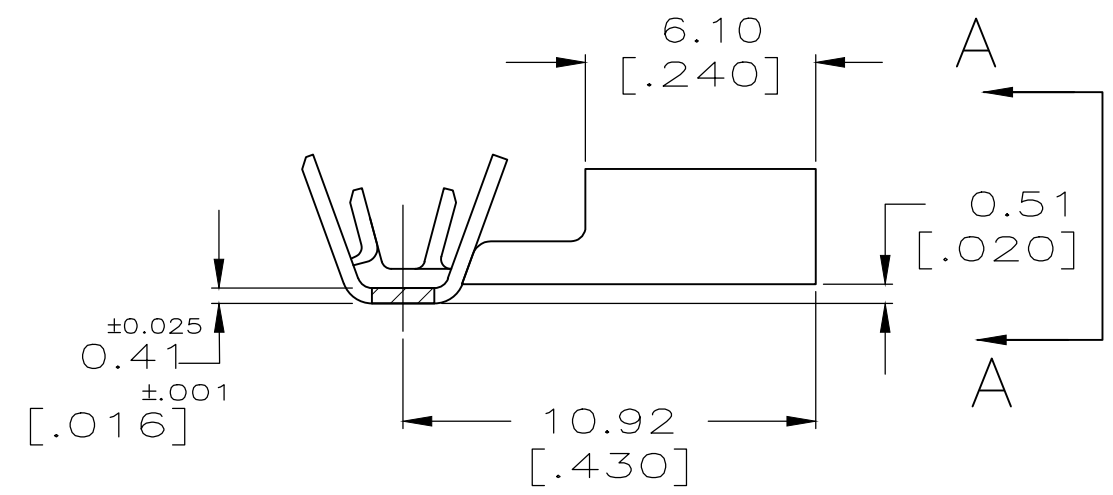


1 CONTINUOUS STRIP ON REELS.

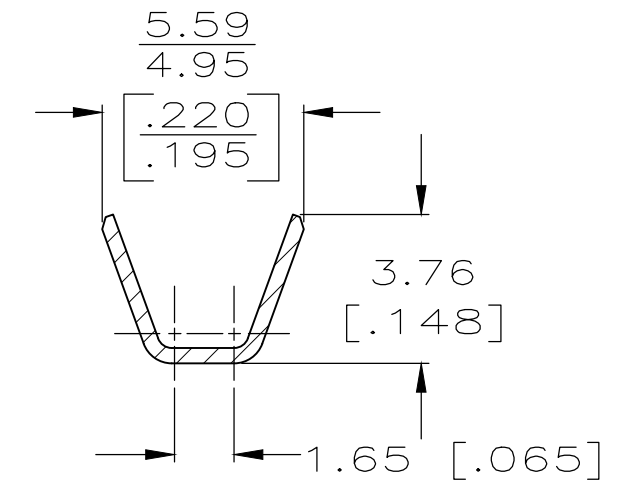
GAP AS REQUIRED TO MEET FORCE SPECIFICATIONS AND 0.71 [.028] MAX

FITS 6.35 [.250] SERIES FASTON TAB

VIEW A-A



SECTION B-B



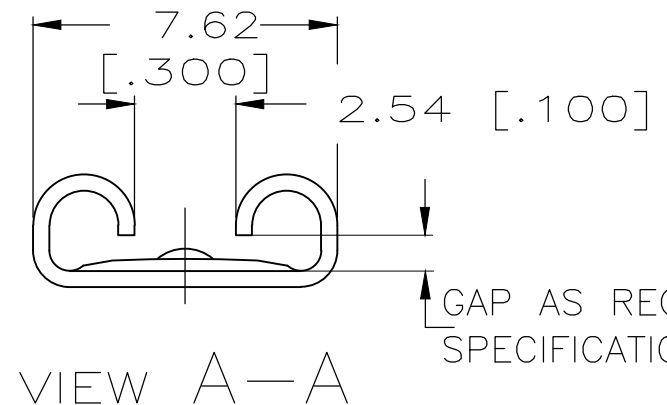
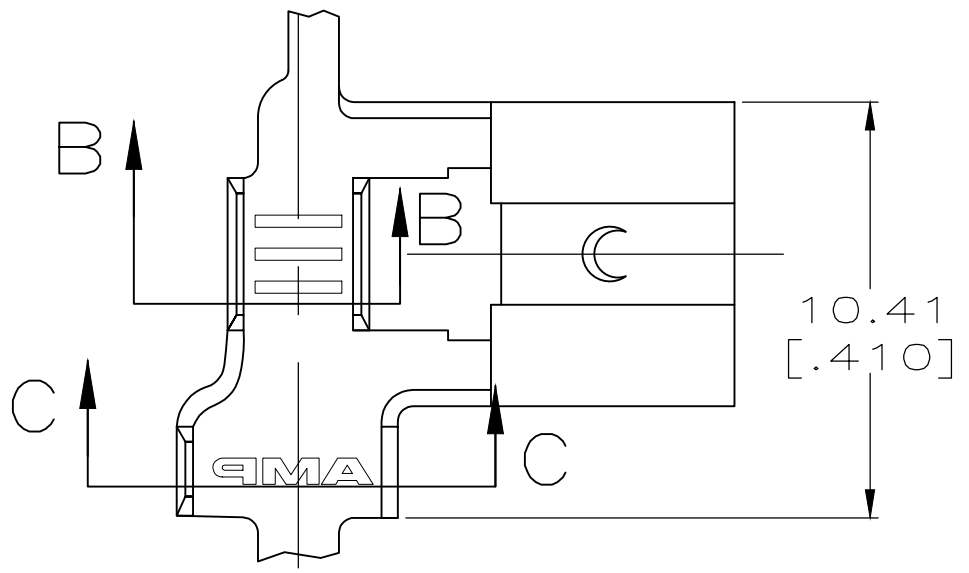
SECTION C-C

TIN	1.52-2.54 [.060-.100] DIA	0.3-0.9mm ² [22-18] AWG	0.84-0.76 [.033-.030]	62814-2 62814-1
FINISH	INSUL RANGE	WIRE SIZE	MATING TAB THK	PART NO

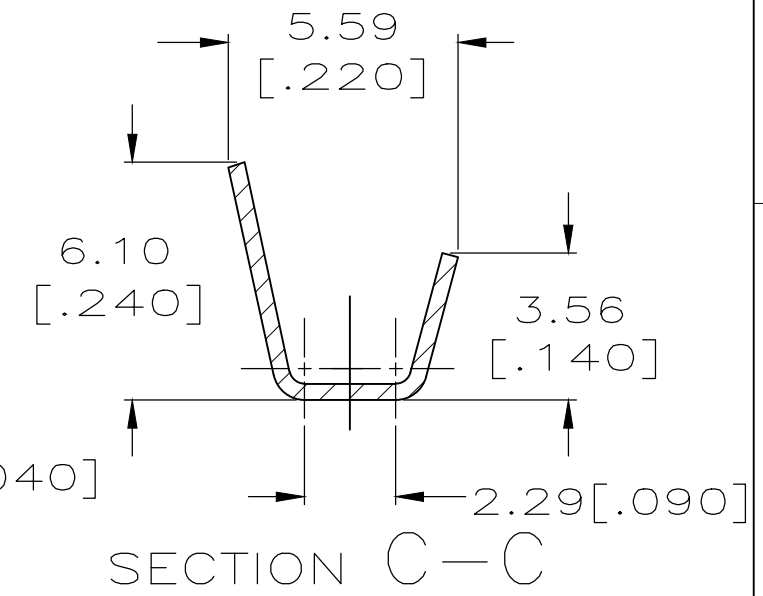
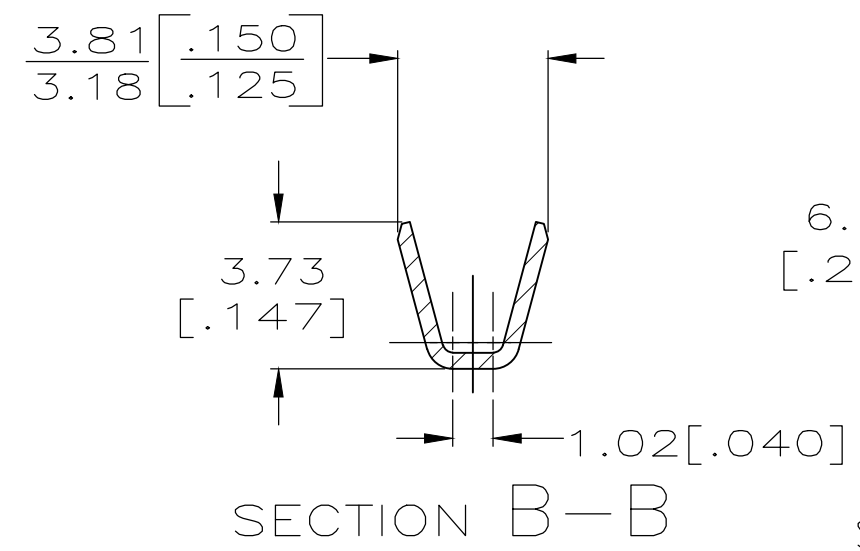
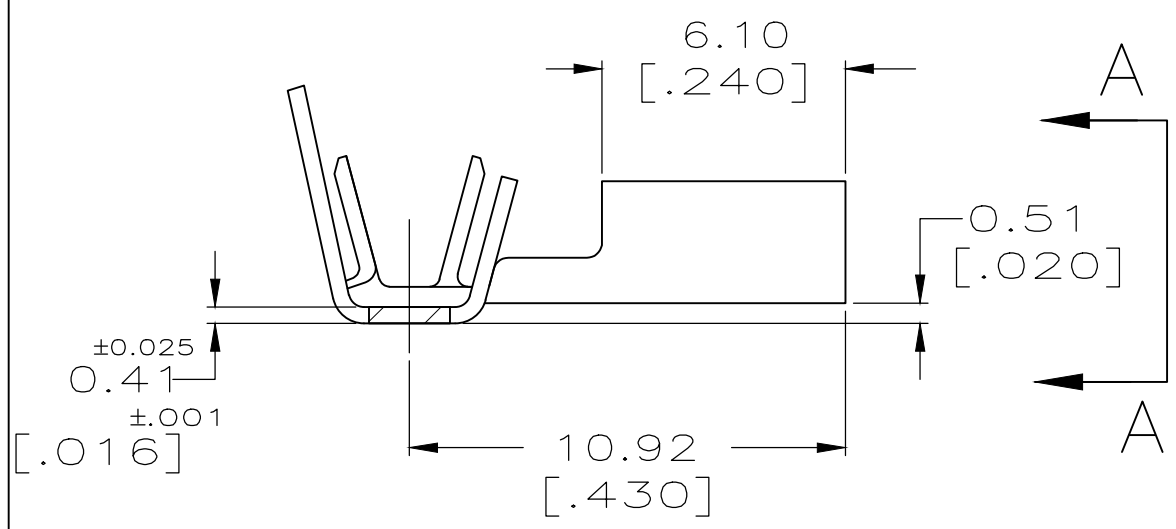
THIS DRAWING IS A CONTROLLED DOCUMENT.		DWN	JR RUTH	4/8/91	 TE Connectivity	NAME					
DIMENSIONS: mm [INCHES]		CHK	MS FEHER	4/8/91		RECEPTACLE, FASTON, FLAG, 6.35 [.250] SERIES					
TOLERANCES UNLESS OTHERWISE SPECIFIED:		APVD	C MEYERS	4/8/91		PRODUCT SPEC	SIZE	CAGE CODE	DRAWING NO	RESTRICTED TO	
0 PLC ± - 1 PLC ± - 2 PLC ± - 3 PLC ± 0.38 [.015] 4 PLC ± - ANGLES ± -		APPLICATION SPEC	-			WEIGHT	A300779 C-62814		-		
MATERIAL	BRASS	FINISH	SEE TABLE		CUSTOMER DRAWING	SCALE	5:1	SHEET	1 OF 1	REV	F1

THIS DRAWING IS UNPUBLISHED. RELEASED FOR PUBLICATION
 © COPYRIGHT - By - ALL RIGHTS RESERVED.

LOC	DIST	REVISIONS			
P	LTR	DESCRIPTION	DATE	DWN	APVD
AF	50	N1	REVISED PER ECR-20-009164	28JUL2020	MK DH



- 1 CONTINUOUS STRIP ON REELS.
- 2 WIRE SIZE IS 0.6-2.0mm [18-14] AWG.
- 3 INSULATION RANGE IS 2.79-4.06 [.110-.160] DIA.
- 4 MATING TAB THK IS 0.84-0.76 [.033-.030].
- 5 SPECIAL PACKAGING QUANTITY



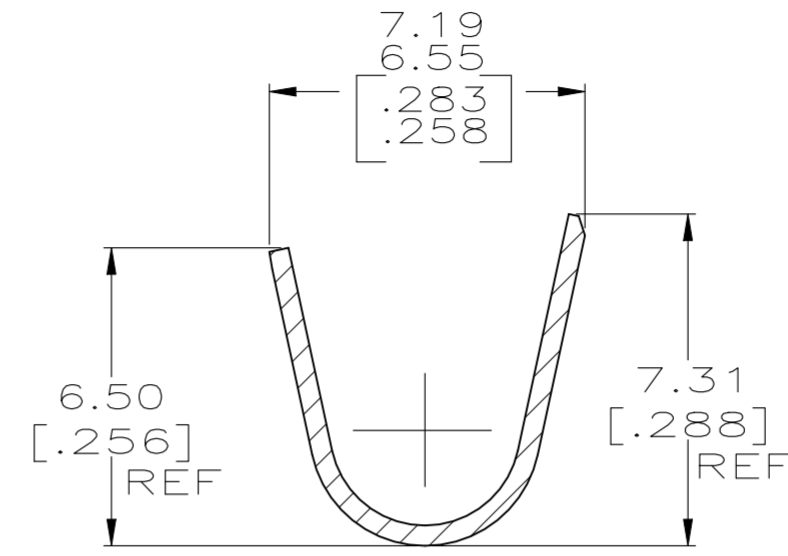
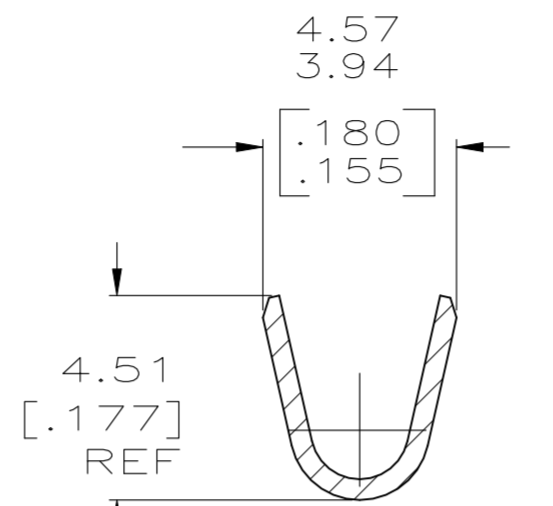
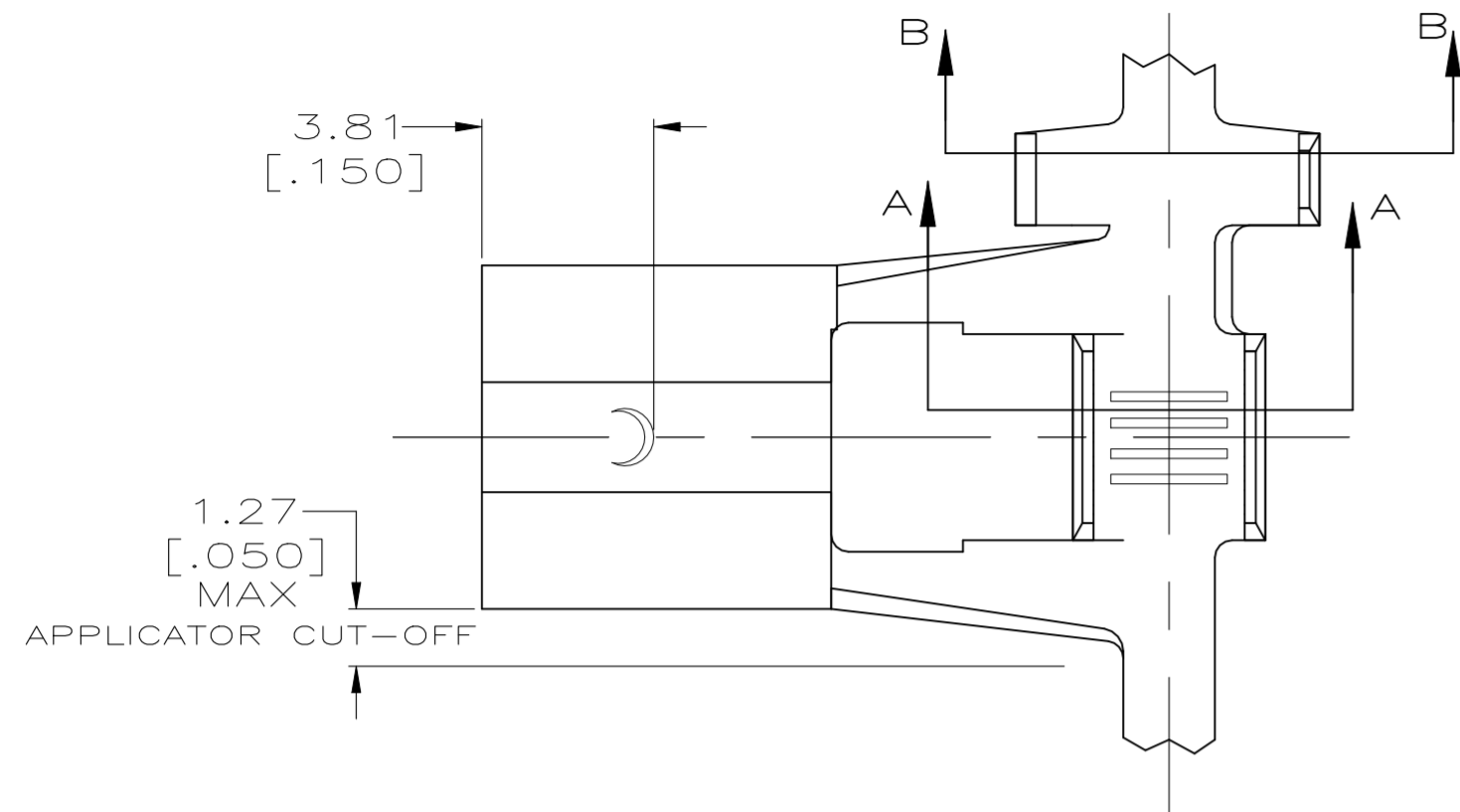
OBSOLETE	.000080 MIN TIN	5 63012-3
	TIN	63012-2
	-	63012-1
	PLATING	PART NO.

THIS DRAWING IS A CONTROLLED DOCUMENT.		DWN	JR RUTH	4/8/91	TE Connectivity RECEPTACLE, FASTON, FLAG, 6.35 [.250] SERIES						
DIMENSIONS: mm [INCHES]		CHK	MS FEHER	4/8/91							
TOLERANCES UNLESS OTHERWISE SPECIFIED:		APVD	C MEYERS	4/8/91							
0 PLC ± - 1 PLC ± - 2 PLC ± - 3 PLC ± 0.38 [.015] 4 PLC ± - ANGLES ± -		PRODUCT SPEC		NAME							
MATERIAL	BRASS	FINISH	SEE TABLE	APPLICATION SPEC	SIZE	CAGE CODE	DRAWING NO	RESTRICTED TO			
				WEIGHT	-	A3	00779	C-63012	-		
				CUSTOMER DRAWING		SCALE	5:1	SHEET	1 OF 1	REV	N1

THIS DRAWING IS UNPUBLISHED. RELEASED FOR PUBLICATION
 © COPYRIGHT - By - ALL RIGHTS RESERVED.

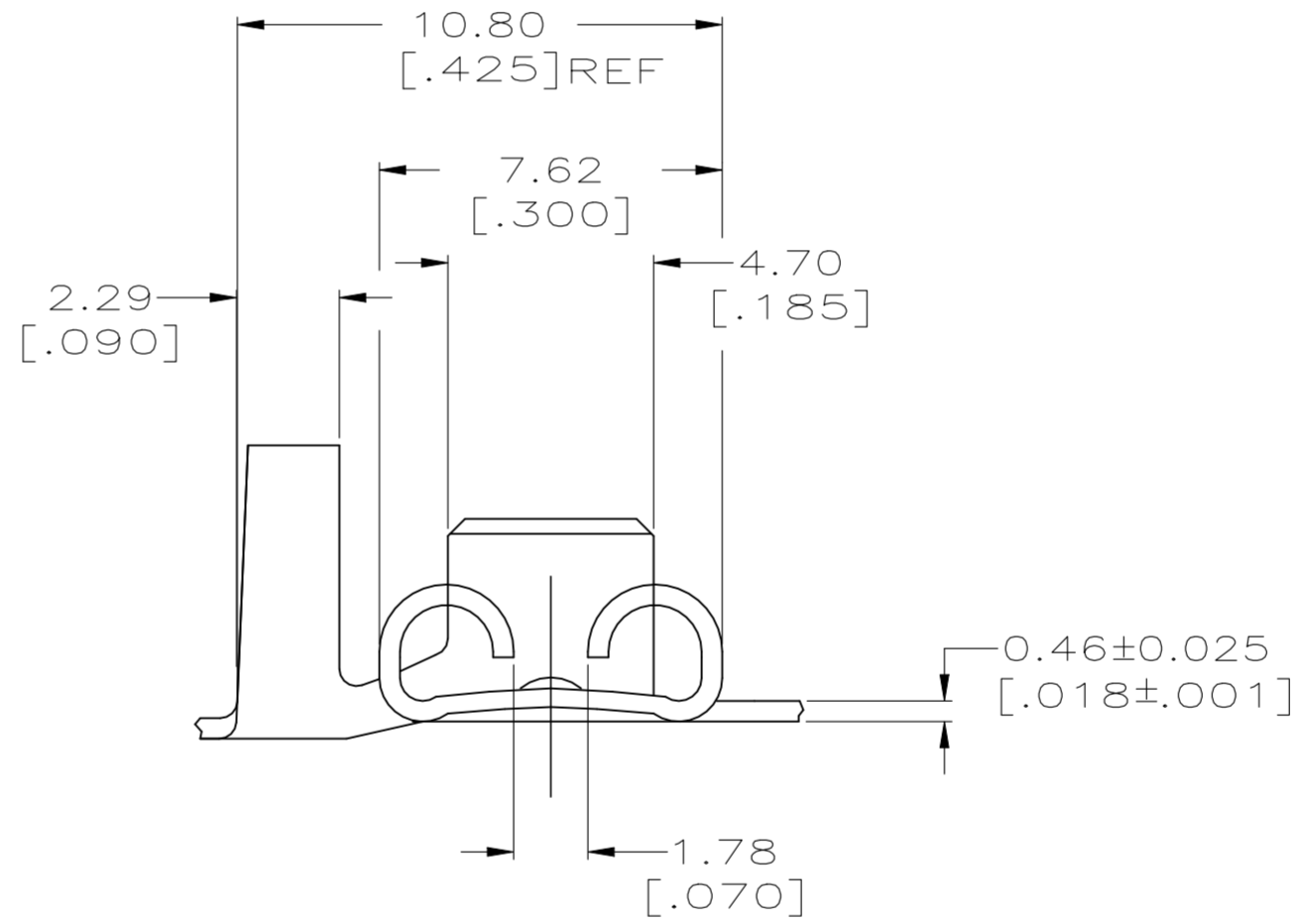
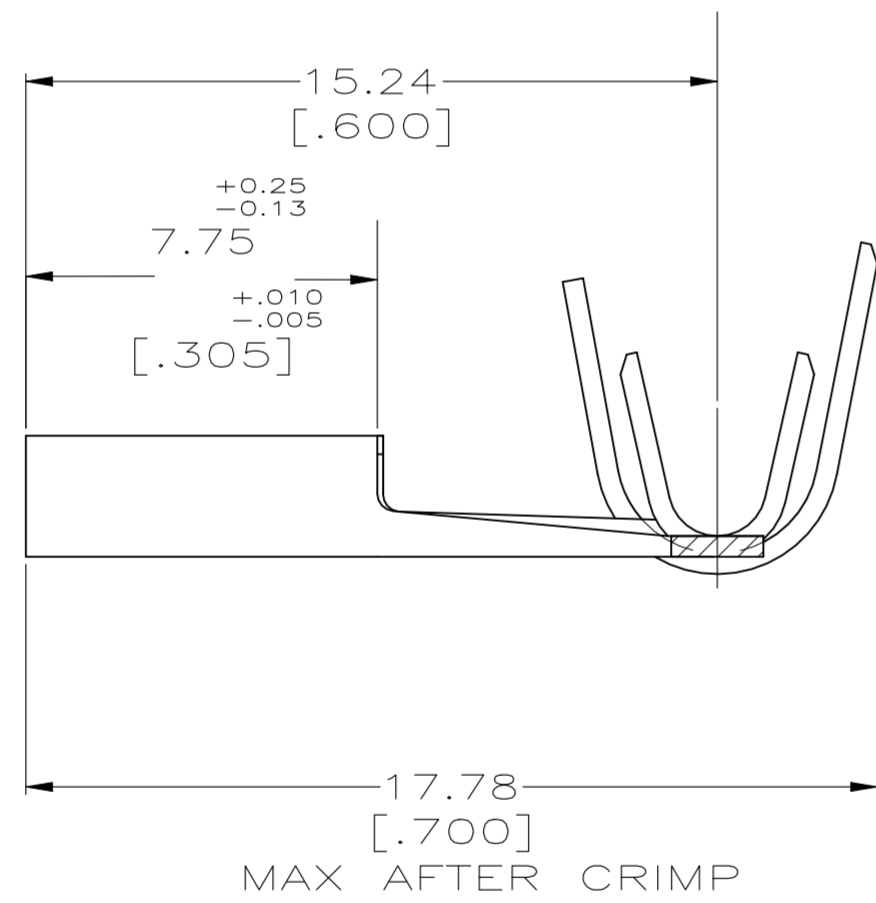
LOC	DIST	REVISIONS			
P	LTR	DESCRIPTION	DATE	DWN	APVD
AF	50				
C		REVISED PER ECR-12-013518	26NOV2012	KH	PD
C1		REVISED PER ECR-22-150321	24AUG2022	VA	ZC

- 1 CONTINUOUS STRIP ON REELS
- 2 MATING TAB THK TO BE 0.813±0.025 [.032±.001].
- 3 WIRE SIZE IS [#16-#12] AWG.
- 4 INSULATION RANGE IS 3.05-4.32 [.120-.170] DIA.



SECTION A-A

SECTION B-B



1742718-1

PART NO.

THIS DRAWING IS A CONTROLLED DOCUMENT.		DWN	JR RUTH	18JUL08	 TE Connectivity
DIMENSIONS:		CHK	MS FEHER	18JUL08	
mm [INCHES]		APVD	P DESANTIS	18JUL08	
TOLERANCES UNLESS OTHERWISE SPECIFIED:		PRODUCT SPEC			
0 PLC	± -	APPLICATION SPEC			NAME
1 PLC	± -				RECEPTACLE , FASTON , FLAG, MOLDABLE, 6.35 [.250] SERIES
2 PLC	± 0.25 [.010]				SIZE
3 PLC	± -				CAGE CODE
4 PLC	± -				DRAWING NO
ANGLES	± -				RESTRICTED TO
MATERIAL	BRASS	FINISH	TIN	WEIGHT	-
		CUSTOMER DRAWING	SCALE	6:1	SHEET
					1 OF 1
					REV
					C1