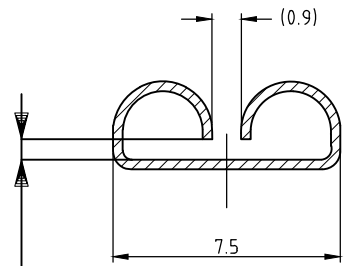
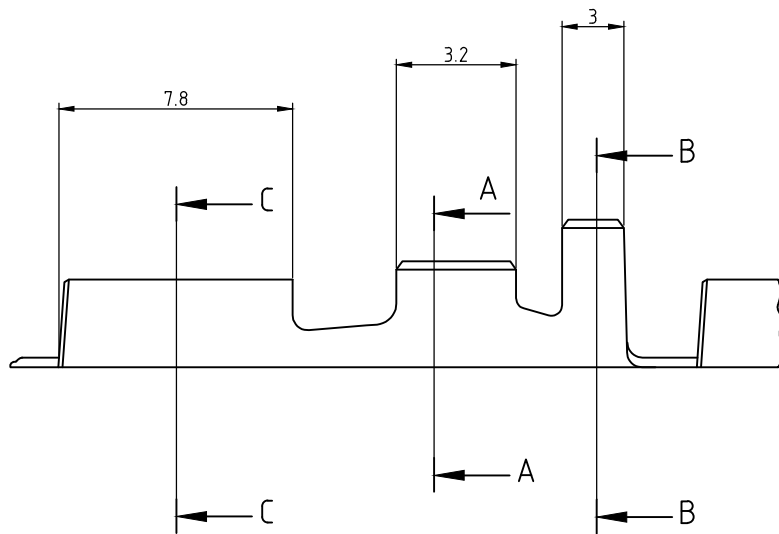
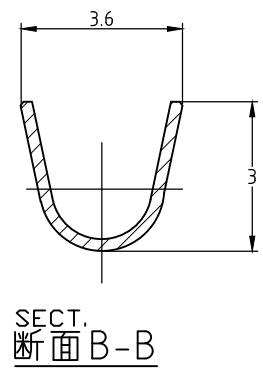
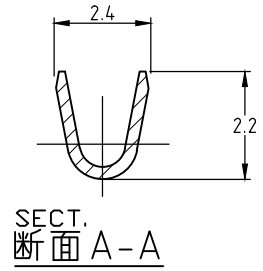
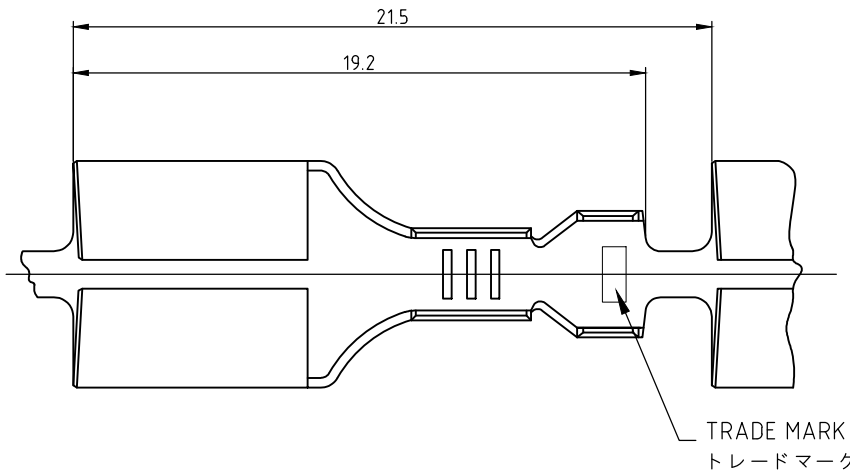


REVISIONS 変更					
P	LTR	DESCRIPTION	DATE	DWN	APVD
	B2	REVISED PER ECR-19-019198	13JAN2020	BH	E.W



この寸法はかん合力によって規定する。  
THIS DIMENSION IS CONTROLLED WITH MATING FORCE

- NOTE;
- 1. STRESS RELIEVING FINISH IS SUBJECT TO CHANGE BY THE TYPE OF STRESS RELIVING PROCESS  
INERT GAS FURNACE - - - MATTE  
ATMOSPHERIC FURNACE FOLLOWED BY ACID PICKLE - - - BRIGHT
  - 2. CONTACT INSERTION FORCE : 39.2N MAX.  
CONTACT EXTRACTION FORCE : 4.9 - 39.2N
  - 3. APPLICATION FEED : 21.49mm

SECT. 断面 C-C

TIN PLATING 錫めっき	BRASS THICKNESS 黄銅 板厚0.32	170384-2
— // —	BRASS THICKNESS 黄銅 板厚0.32	170384-1
FINISH 仕上	MATERIAL 材質	PART NO. 型番

THIS DRAWING IS UNPUBLISHED.

ALL RIGHTS RESERVED.

COPYRIGHT - By -

WIRE RANGE 総合電線断面積 0.3~0.5mm <sup>2</sup> (AWG#22-20)	INSULATION DIA 被覆外径 1.5~2.2mmφ
--	-----------------------------------

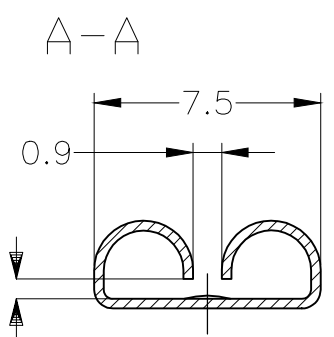
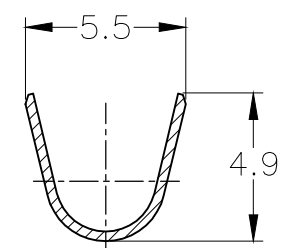
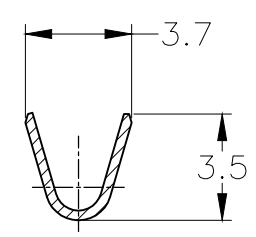
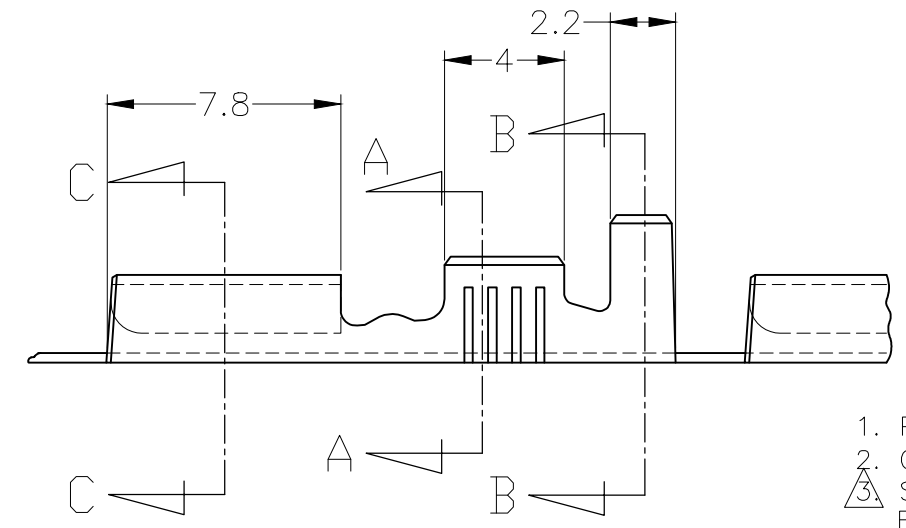
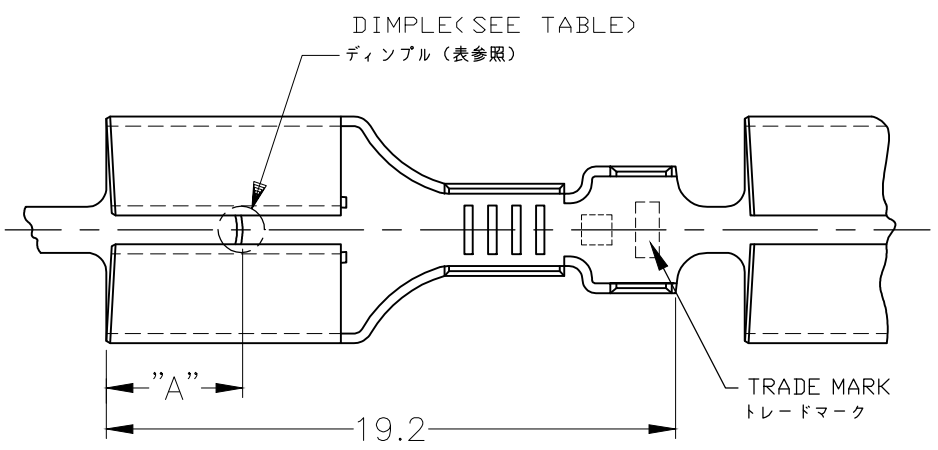
DIMENSIONS: 単位: 耗 mm	
TOLERANCES UNLESS OTHERWISE SPECIFIED: 一般公差	
0.0以下	± 0.2
1 PLC	±
2.0以下 3.0以下	± 0.25
3 PLC	±
3.0以下 10以下	± 0.3
ANGLES	± 3°

DWN J.SATO	17MAY2007	MATERIAL 材料	SEE TABLE	FINISH 仕上	SEE TABLE
CHK S.MANABE	17MAY2007	TE Connectivity .250 SERIES RECEPTACLE WITHOUT LATCH			
APVD S.MANABE	17MAY2007				
PRODUCT SPEC 製品規格					
APPLICATION SPEC 取付適用規格		NAME 名称			
WEIGHT 0.000000	A4	CAGE CODE 00779	DRAWING NO 番号 170384	RESTRICTED TO —	
CUSTOMER DRAWING			SCALE 尺度	4:1	SHEET 1 OF 1

SCALE 尺度		4:1	SHEET 1 OF 1		REV B2
-------------	--	-----	-----------------	--	-----------

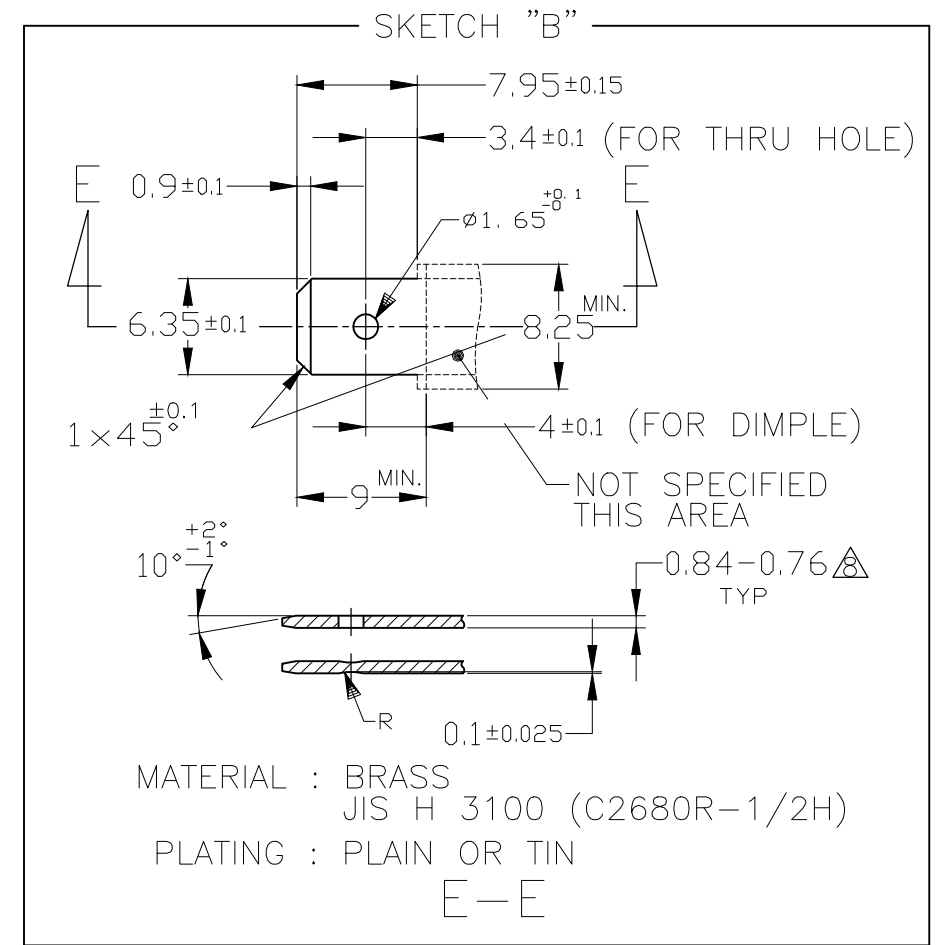
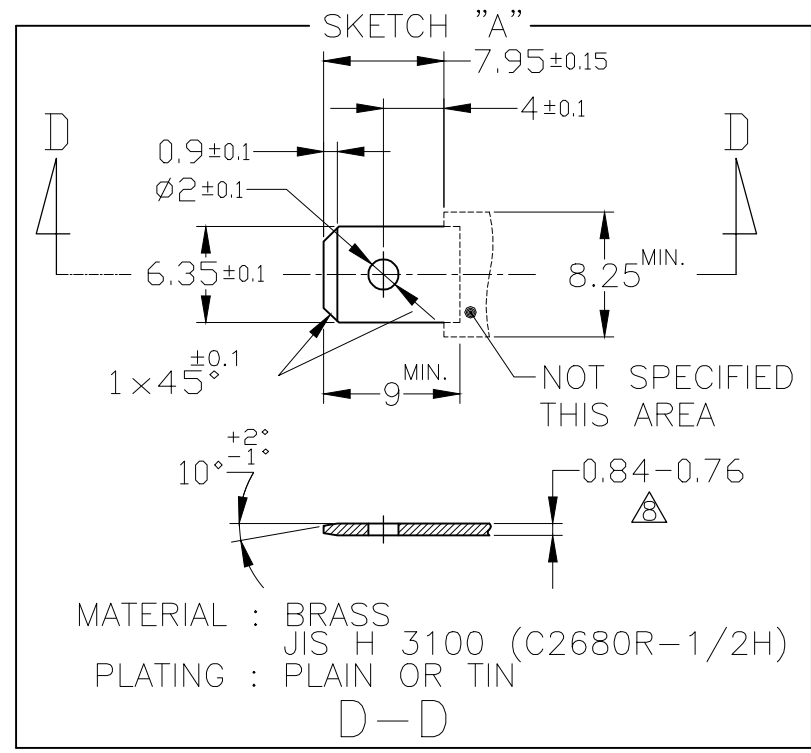
THIS DRAWING IS UNPUBLISHED. RELEASED FOR PUBLICATION  
 © COPYRIGHT 2004 By - ALL RIGHTS RESERVED.

LOC	DIST	REVISIONS					
J	-	P	LTR	DESCRIPTION	DATE	DWN	APVD
			U3	REVISED PER ECR-16-015552	3NOV2016	D.L	T.D
			U4	REVISED PER ECR-20-009164	11AUG2020	MK	E.W



この寸法は嵌合力によって管理する。  
 THIS DIMENSION IS CONTROLLED WITH MATING FORCE AND 0.71 MAX

推奨タブ図  
 RECOMMENDED TAB DIMENSIONS



1. PRODUCT SPEC : 108-5153, 108-5169
2. CRIMP SPEC : 114-5052
3. STRESS RELIEVING FINISH IS SUBJECT TO CHANGE BY THE TYPE OF STRESS RELIVING PROCESS  
 INERT GAS FURNACE - - - -MATTE  
 ATMOSPHERIC FURNACE FOLLOWED BY ACID PICKLE - - - -BRIGHT
4. ELIMINATION STRESS RELIVING PROCESS
5. PRODUCT SPECIFICATION: 108-5147
6. QUALIFICATION TEST REPORT: 501-5050

△ SEPARATE PAPER TYPE  
 △ MATING TAB THICKNESS IS 0.84-0.76

1. 製品規格 : 108-5153, 108-5169
2. 取付適用規格 : 114-5052
3. ストレス除去処理  
 処理方法により外観が変わります。  
 不活性ガス加熱方式 - - - 無光沢  
 大気加熱方式 - - - 光沢
4. ストレス除去処理をしない。
5. 製品規格 : 108-5147
6. 認定試験報告書 : 501-5050

OBSOLETE AMP AUSTRALIAN PRODUCT  
 アンプ オーストラリア製

OBSOLETE SKETCH "A" OR "B"

170030-1 OR EQUIVALENT TO 170030	W/O DIMPLE	---	BRASS	---	---	8-170032-7
170256-3 OR EQUIVALENT TO 170256	W/O DIMPLE	TIN PLATING	BRASS	---	179461-5	6-170032-5
170030-1 OR EQUIVALENT TO 170030	W/O DIMPLE	△	BRASS	---	---	6-170032-2
170030-3 OR EQUIVALENT TO 170030	W/O DIMPLE	TIN PLATING 錫メッキ	ZKLF-5 #4	---	---	170032-6
170256-3 OR EQUIVALENT TO 170256	W/O DIMPLE	TIN PLATING 錫メッキ	BRASS	---	179461-5	170032-5
SKETCH, "A"	WITH DIMPLE	TIN PLATING 錫メッキ	BRASS	4.5	---	170032-4
OBSOLETE SKETCH "A" OR "B"	WITH DIMPLE	---	BRASS	3.8	---	170032-3
170030-1 OR EQUIVALENT TO 170030	W/O DIMPLE	---	BRASS	---	---	170032-2
SKETCH, "A"	WITH DIMPLE	---	BRASS	4.5	---	170032-1
MATING TAB	DIMPLE	FINISH	MATERIAL	"A"	LOOSE PIECE NUMBER	PART NUMBER

THIS DRAWING IS A CONTROLLED DOCUMENT.

DIMENSIONS: 単位: 概 mm	TOLERANCES UNLESS OTHERWISE SPECIFIED: 一般公差 ±0.4
0 PLC ±	1 PLC ±
2 PLC ±	3 PLC ±
4 PLC ±	ANGLES ±3°
MATERIAL 材料	FINISH 仕上
0.32 THK	SEE TABLE △

DWN A.YAMAGUCHI	23JUN04
CHK K.BETSUI	19SEP2015
APVD K.BETSUI	23JUN04
PRODUCT SPEC 製品規格	SEE NOTE
APPLICATION SPEC 取付適用規格	---
WEIGHT	---

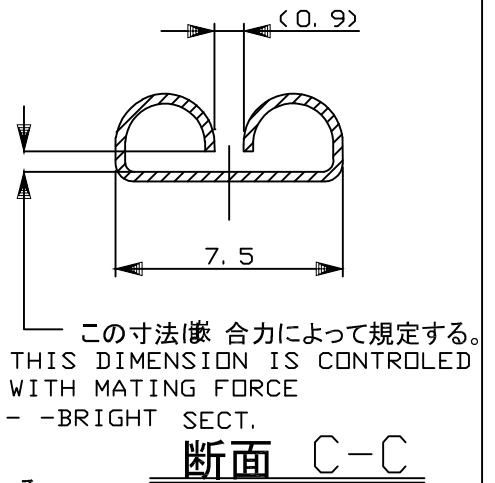
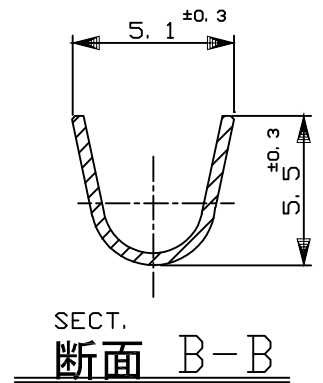
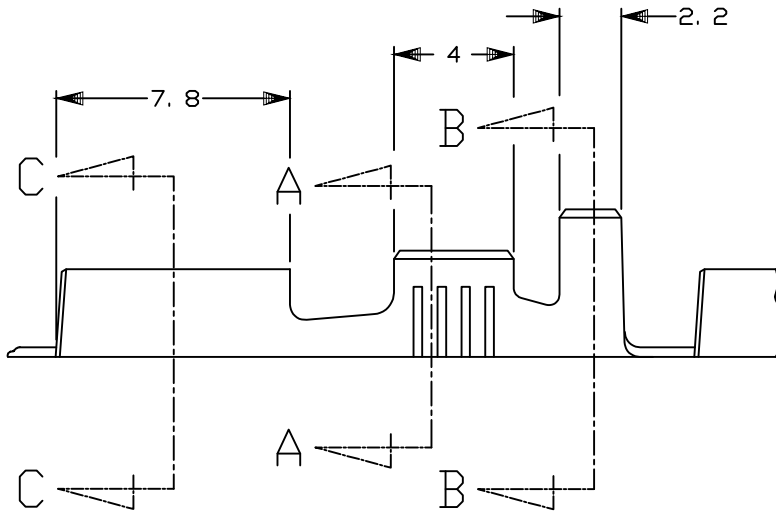
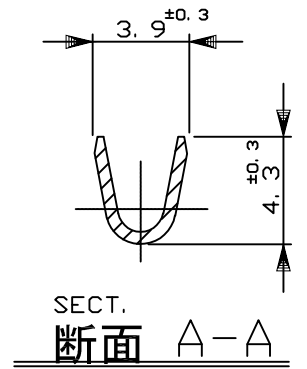
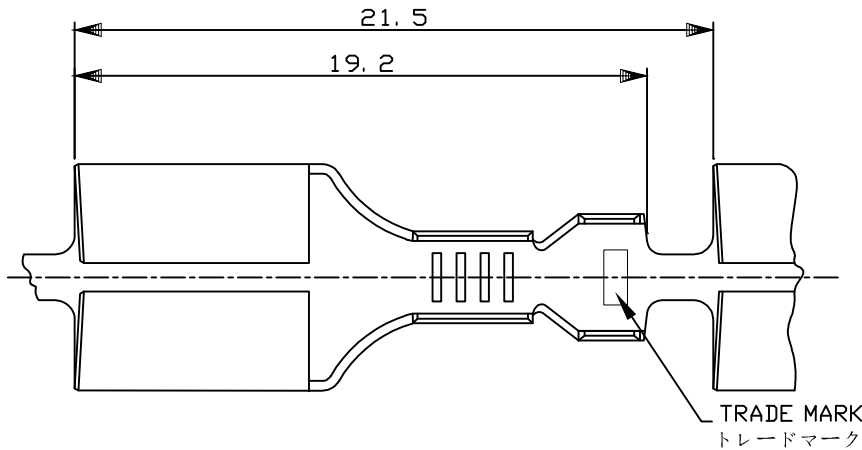
**STE** TE Connectivity

250 SERIES RECEPTACLE WITHOUT LATCH

SIZE: A3 CAGE CODE: 00779 DRAWING NO: C-170032 RESTRICTED TO: ---

CUSTOMER DRAWING SCALE: 4:1 SHEET: 1 OF 1 REV: U4

LOC J	DIST —	REVISIONS 変更			DATE	DWN	APVD
		P	LTR	DESCRIPTION			
			F2	REVISED PER ECR-15-006361	23APR15	LP	TD
			F3	REVISED PER ECR-16-015552	3NOV16	DL	T.D



NOTE;

- THE MATING TAB P/N 170256, 170257 (FOR MULTIPLE Pos.)
- REVERSE REEL
- STRESS RELIEVING FINISH IS SUBJECT TO CHANGE BY THE TYPE OF STRESS RELIVING PROCESS  
INERT GAS FURNACE- - - -MATTE  
ATOMOSPHERIC FURNACE FOLLOWED BY ACID PICKLE- - - -BRIGHT SECT.
- SEPARATE PAPER TYPE

注記

- 嵌合する相手タブは型番170256及び170257で多極用として使用される。
- 逆巻きリール
- ストレス除去処理  
処理法により外観が変わります。  
不活性ガス加熱方式 -- 無光沢  
大気加熱方式 -- 光沢
- OBSELETE

—	—	170258-4
TIN PLATING	—	170258-3
TIN PLATING 錫めつき	—	3-170258-1
—	BRASS THICKNESS 黄銅 板厚0.32	170258-2
FINISH 仕上	MATERIAL 材質	170258-1
		PART NO. 型番

抱合電線切断面積(WIRE RANGE) 2-3.37 mm <sup>2</sup> (AWG#14-12)	被覆外径(INSULATION DIA.) 2.9-3.8 mmφ
--	--------------------------------------

RELEASED FOR PUBLICATION

ALL RIGHTS RESERVED.

THIS DRAWING IS UNPUBLISHED.

COPYRIGHT - By -

DIMENSIONS: 単位: 耗 mm	DWN Y.YAMADA	03APR2007	MATERIAL 材料	SEE TABLE	FINISH 仕上	SEE TABLE	3
	CHK MANABA SAKAE	03APR2007	TE Connectivity NAME 名称 .250 SERIES RECEPTACLE WITHOUT LATCH .250 シリーズ リセプタクル ラッチなし SIZE CAGE CODE DRAWING NO 番号 A4 00779 C-170258 RESTRICTED TO —				
TOLERANCES UNLESS OTHERWISE SPECIFIED: 一般公差	APVD MANABA SAKAE	03APR2007					
10以下 : ±0.2 10を超え30以下 : ±0.25 30を超え100以下 : ±0.3 角度 : ±3°	PRODUCT SPEC 製品規格						
	APPLICATION SPEC 取付適用規格						
	WEIGHT						
CUSTOMER DRAWING		SCALE 尺度 1:1	SHEET 1 OF 1	REV F3			