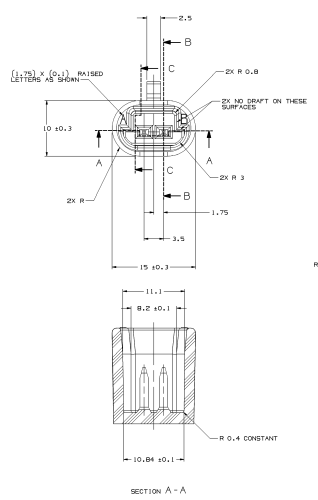
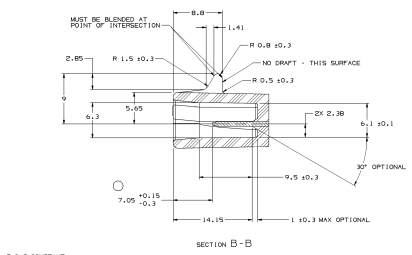


**MATERIAL SPECIFICATIONS**  
 RECOMMENDED  
 BASE METAL - CDA-210, EXTRA SPRING TEMPER  
 PLATING - 0.005±0.0025 MM THICK TIN  
 MINIMUMS  
 ELECTRICAL CONDUCTIVITY - ≥ 200 1425 AT 20°C. USE OF A MATERIAL WITH CONDUCTIVITY ≥ 200 1425 MUST BE APPROVED BY PACKING ELECTRIC MATERIALS ENGINEERS.  
 TENSILE STRENGTH - ≥ 607 MPa  
 PLATING FOR ION ENERGY (≤ 5 eV) AND NON-PASSENER PLATING FOR MATERIALS CONTAINING 100% OR MORE TIN. AN LAYER OF COPPER 0.005±0.0025 MM THICK IS REQUIRED.  
 BLADE THICKNESS  
 UNPLATED ± 0.813 ± 0.025  
 TIN PLATED ± 0.823 ± 0.03

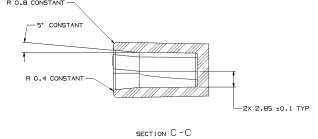
MATING BLADE INFORMATION  
 SCALE 10:1



MATING CONNECTOR INFORMATION

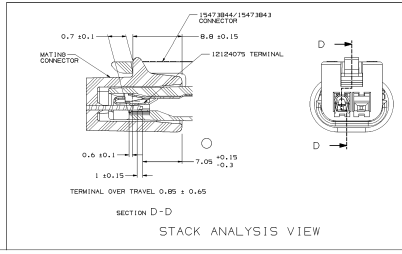


SECTION B-B

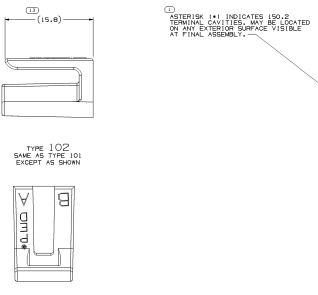


SECTION C-C

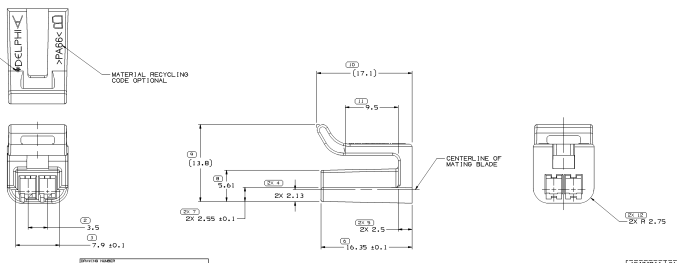
- NOTES**
1. UNLESS OTHERWISE SPECIFIED AND/OR INDICATED: DIMENSIONS ARE TO FACE OF VIEW SHOWN AND AUTOMATICALLY ROUNDED BY COMPUTER FOR INSPECTION. USE WITH MODEL FOR PRECISE DIMENSIONS. FOR ALL OTHER DIMENSIONS NOT SHOWN BUT REQUIRED FOR TOOL BUILD, USE MATH MODEL FOR PRECISE TOOL PATH DATA. SEE PAGE 1.
  2. TERMINALS MUST EXTEND A MINIMUM RIGIDITY FORCE OF 67N.
  3. WHEN (P) IS THIS INFORMATION FOR A NEW DESIGN, REQUEST THE LATEST COPY OF THIS PRINT FROM PACKAGING ELECTRIC DESIGN.
  4. RECOMMENDED MATERIAL - GLASS REINFORCED NYLON OR POLYESTER.



SECTION D-D  
 STACK ANALYSIS VIEW



OPTIONAL CONSTRUCTION



15473841  
 TOP VIEW  
 15473841 08 08  
 15473841 08 08  
 15473841 08 08

15473841 08 08	15473841 08 08	15473841 08 08	15473841 08 08
15473841 08 08	15473841 08 08	15473841 08 08	15473841 08 08
15473841 08 08	15473841 08 08	15473841 08 08	15473841 08 08
15473841 08 08	15473841 08 08	15473841 08 08	15473841 08 08

- NOTES**
1. UNLESS OTHERWISE SPECIFIED AND/OR INDICATED: DIMENSIONS ARE TO FACE OF VIEW SHOWN AND AUTOMATICALLY ROUNDED BY COMPUTER FOR INSPECTION. USE WITH MODEL FOR PRECISE DIMENSIONS. FOR ALL OTHER DIMENSIONS NOT SHOWN BUT REQUIRED FOR TOOL BUILD, USE MATH MODEL FOR PRECISE TOOL PATH DATA. SEE PAGE 1.
  2. MATERIAL RECYCLING CODE PER ISO 11469. 11151(10.1) CHARACTERS AS SHOWN TO BE LOCATED ON ANY EXTERIOR SURFACE.
  3. 11151(10.1) DELPHI CORPORATE BRAND TO BE LOCATED ON ANY EXTERIOR SURFACE. FOR PRECISE DIMENSIONS, USE WITH MODEL FOR PRECISE TOOL PATH DATA.
  4. THIS PRODUCT IS NOT CATEGORIZED AS AN APPEARANCE ITEM, WITH UNEXPECTED INCLUDING, BUT NOT LIMITED TO, COLOR, BLENDING, DATE VESTING, AND SOFT PLAST THAT DO NOT AFFECT THE FIT, FORM, OR FUNCTION OF THE PART ARE PERMISSIBLE PER DMP-4.7-05-01.
  5. FOR APPLICATION DATA SEE THE INDIVIDUAL APPLICATION DRAWINGS.



VIEW SCALE DOES NOT REFLECT ACTUAL PART SIZE

SYMBOL DEFINITION		MISSING SYMBOLS		REVISION HISTORY	
A DIMENSION WITHOUT AN INSPECTION REPORT SYMBOL, A DIMENSION WITH A DIMENSIONAL TOLERANCE, OR A DIMENSION CONTROLLED ON THE INDIVIDUAL COMPONENT DRAWING.	TOTAL NO. OF REQUIRED	NO MISSING SYMBOL NUMBER	REV	DATE	DESCRIPTION
	13		15473841	08/08	ALL PARTS - RELEASED
			15473841	08/08	ALL PARTS - UPDATED AND APPROVED
			15473841	08/08	ALL PARTS - ISSUED STACK ANALYSIS VIEW
			15473841	08/08	15473841 - WITH SPEC THIS SURFACE
			15473841	08/08	ALL PARTS - UPDATED APPLICATION DATA AND LABELS REDESIGNED WITH IMPROVED TOOLING TO IMPROVE QUALITY OF ASSEMBLY
			15473841	08/08	UPDATED WITH NEW CONFIGURATION INFO

**DELPHI**  
 QUALITY FOCUSED ELECTRICAL SYSTEMS  
 PART DRAWING  
 PART NO: 15473841  
 REV: 08  
 DATE: 08/08  
 DRAWN BY: [Signature]  
 CHECKED BY: [Signature]  
 APPROVED BY: [Signature]  
 TITLE: [Signature]  
 SCALE: 1:1  
 SHEET NO: 1 OF 1  
 PART NO: 15473841  
 REV: 08  
 DATE: 08/08

12413841