

**MATERIAL SPECIFICATIONS**

BASE METAL - 60-20-20, EXTRA SPRING TOLERANCE

ELECTRICAL CONDUCTIVITY - 20% MAX AT 20°C. USE OF A LOWER CONDUCTIVITY MATERIAL MAY BE APPROVED BY DELPHI PROVIDED ELECTRICAL PERFORMANCE OF THE CONNECTION SYSTEM IS NOT IMPACTED.

MECHANICAL STRENGTH - 480 MPa MIN

UNDERLAYER FOR TIN PLATING - FOR BASE METALS CONTAINING LESS THAN 5% COPPER. UNDERLAYER FOR TIN PLATING IS NOT REQUIRED FOR BASE METALS CONTAINING MORE THAN 5% COPPER.

REWORKING MATERIAL - PLUNGE FILED NICKEL OR POLYESTER

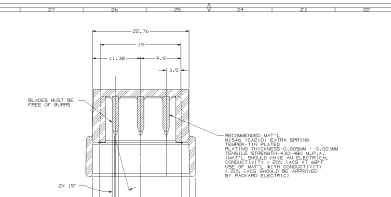
WIRE COATING - 0.5 μm MIN. USE OF A LOWER COATING THICKNESS MAY BE APPROVED BY DELPHI PROVIDED ELECTRICAL PERFORMANCE OF THE CONNECTION SYSTEM IS NOT IMPACTED.

**MATING BLADE INFORMATION**



**NOTES**

- UNLESS OTHERWISE SPECIFIED, ALL DIMENSIONS ARE IN MILLIMETERS.
- THE SURFACE OF THE SPRING AND WIRE MUST BE TENSIONED TO THE SPECIFIED LENGTH. THE SURFACE OF THE SPRING AND WIRE MUST BE TENSIONED TO THE SPECIFIED LENGTH. THE SURFACE OF THE SPRING AND WIRE MUST BE TENSIONED TO THE SPECIFIED LENGTH.
- THE SURFACE OF THE SPRING AND WIRE MUST BE TENSIONED TO THE SPECIFIED LENGTH. THE SURFACE OF THE SPRING AND WIRE MUST BE TENSIONED TO THE SPECIFIED LENGTH. THE SURFACE OF THE SPRING AND WIRE MUST BE TENSIONED TO THE SPECIFIED LENGTH.

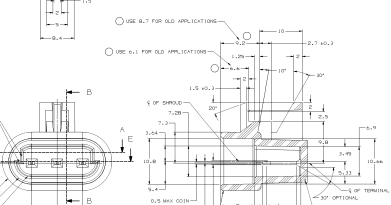


**RECOMMENDED MOUNTING METHOD FOR EXTRA SPRING**

PLUNGE FILED NICKEL OR POLYESTER

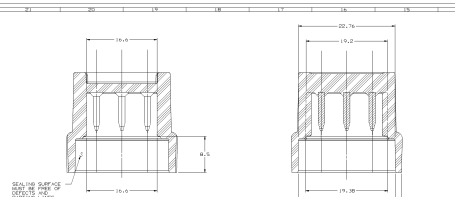
WIRE COATING - 0.5 μm MIN. USE OF A LOWER COATING THICKNESS MAY BE APPROVED BY DELPHI PROVIDED ELECTRICAL PERFORMANCE OF THE CONNECTION SYSTEM IS NOT IMPACTED.

**MATING CONNECTOR INFORMATION OTHER APPLICATIONS**



**NOTES**

- UNLESS OTHERWISE SPECIFIED, ALL DIMENSIONS ARE IN MILLIMETERS.
- THE SURFACE OF THE SPRING AND WIRE MUST BE TENSIONED TO THE SPECIFIED LENGTH. THE SURFACE OF THE SPRING AND WIRE MUST BE TENSIONED TO THE SPECIFIED LENGTH. THE SURFACE OF THE SPRING AND WIRE MUST BE TENSIONED TO THE SPECIFIED LENGTH.
- THE SURFACE OF THE SPRING AND WIRE MUST BE TENSIONED TO THE SPECIFIED LENGTH. THE SURFACE OF THE SPRING AND WIRE MUST BE TENSIONED TO THE SPECIFIED LENGTH. THE SURFACE OF THE SPRING AND WIRE MUST BE TENSIONED TO THE SPECIFIED LENGTH.

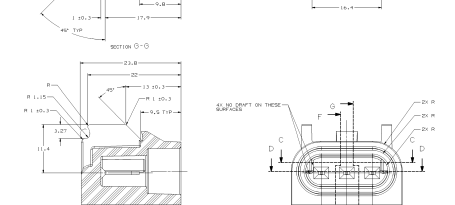


**RECOMMENDED MOUNTING METHOD FOR EXTRA SPRING**

PLUNGE FILED NICKEL OR POLYESTER

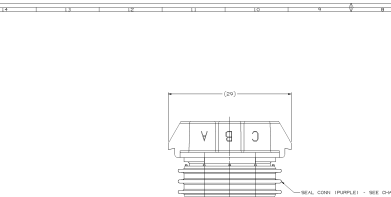
WIRE COATING - 0.5 μm MIN. USE OF A LOWER COATING THICKNESS MAY BE APPROVED BY DELPHI PROVIDED ELECTRICAL PERFORMANCE OF THE CONNECTION SYSTEM IS NOT IMPACTED.

**MATING CONNECTOR INFORMATION-ABS VI**



**NOTES**

- UNLESS OTHERWISE SPECIFIED, ALL DIMENSIONS ARE IN MILLIMETERS.
- THE SURFACE OF THE SPRING AND WIRE MUST BE TENSIONED TO THE SPECIFIED LENGTH. THE SURFACE OF THE SPRING AND WIRE MUST BE TENSIONED TO THE SPECIFIED LENGTH. THE SURFACE OF THE SPRING AND WIRE MUST BE TENSIONED TO THE SPECIFIED LENGTH.
- THE SURFACE OF THE SPRING AND WIRE MUST BE TENSIONED TO THE SPECIFIED LENGTH. THE SURFACE OF THE SPRING AND WIRE MUST BE TENSIONED TO THE SPECIFIED LENGTH. THE SURFACE OF THE SPRING AND WIRE MUST BE TENSIONED TO THE SPECIFIED LENGTH.

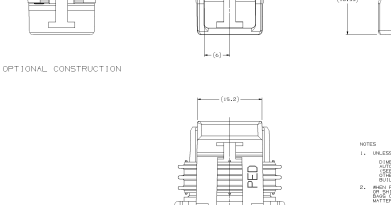


**RECOMMENDED MOUNTING METHOD FOR EXTRA SPRING**

PLUNGE FILED NICKEL OR POLYESTER

WIRE COATING - 0.5 μm MIN. USE OF A LOWER COATING THICKNESS MAY BE APPROVED BY DELPHI PROVIDED ELECTRICAL PERFORMANCE OF THE CONNECTION SYSTEM IS NOT IMPACTED.

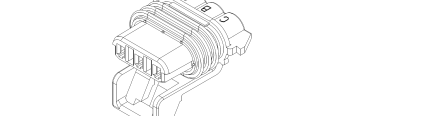
**OPTIONAL CONSTRUCTION**



**NOTES**

- UNLESS OTHERWISE SPECIFIED, ALL DIMENSIONS ARE IN MILLIMETERS.
- THE SURFACE OF THE SPRING AND WIRE MUST BE TENSIONED TO THE SPECIFIED LENGTH. THE SURFACE OF THE SPRING AND WIRE MUST BE TENSIONED TO THE SPECIFIED LENGTH. THE SURFACE OF THE SPRING AND WIRE MUST BE TENSIONED TO THE SPECIFIED LENGTH.
- THE SURFACE OF THE SPRING AND WIRE MUST BE TENSIONED TO THE SPECIFIED LENGTH. THE SURFACE OF THE SPRING AND WIRE MUST BE TENSIONED TO THE SPECIFIED LENGTH. THE SURFACE OF THE SPRING AND WIRE MUST BE TENSIONED TO THE SPECIFIED LENGTH.

SYMBOL	DEFINITION	ISSUE NO.	DATE	BY	APPROVED
1	CONNECTOR HOUSING WITH INTERNAL CONTACT	1			
2	CONNECTOR HOUSING WITH INTERNAL CONTACT	1			

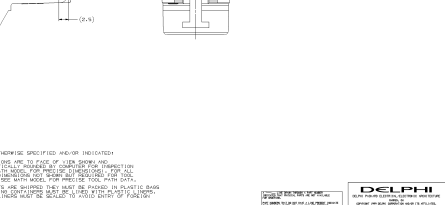


**RECOMMENDED MOUNTING METHOD FOR EXTRA SPRING**

PLUNGE FILED NICKEL OR POLYESTER

WIRE COATING - 0.5 μm MIN. USE OF A LOWER COATING THICKNESS MAY BE APPROVED BY DELPHI PROVIDED ELECTRICAL PERFORMANCE OF THE CONNECTION SYSTEM IS NOT IMPACTED.

**MATING CONNECTOR INFORMATION-ABS VI**



**NOTES**

- UNLESS OTHERWISE SPECIFIED, ALL DIMENSIONS ARE IN MILLIMETERS.
- THE SURFACE OF THE SPRING AND WIRE MUST BE TENSIONED TO THE SPECIFIED LENGTH. THE SURFACE OF THE SPRING AND WIRE MUST BE TENSIONED TO THE SPECIFIED LENGTH. THE SURFACE OF THE SPRING AND WIRE MUST BE TENSIONED TO THE SPECIFIED LENGTH.
- THE SURFACE OF THE SPRING AND WIRE MUST BE TENSIONED TO THE SPECIFIED LENGTH. THE SURFACE OF THE SPRING AND WIRE MUST BE TENSIONED TO THE SPECIFIED LENGTH. THE SURFACE OF THE SPRING AND WIRE MUST BE TENSIONED TO THE SPECIFIED LENGTH.

**DELPHI**

15324700

15324700