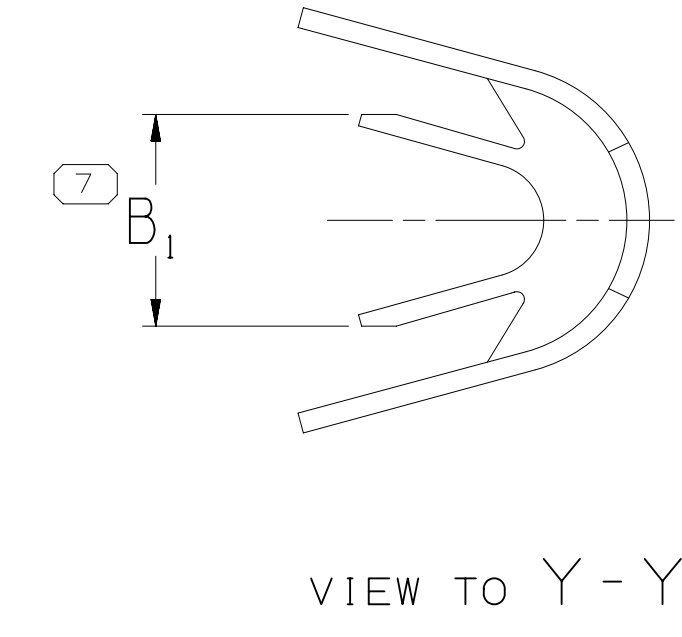
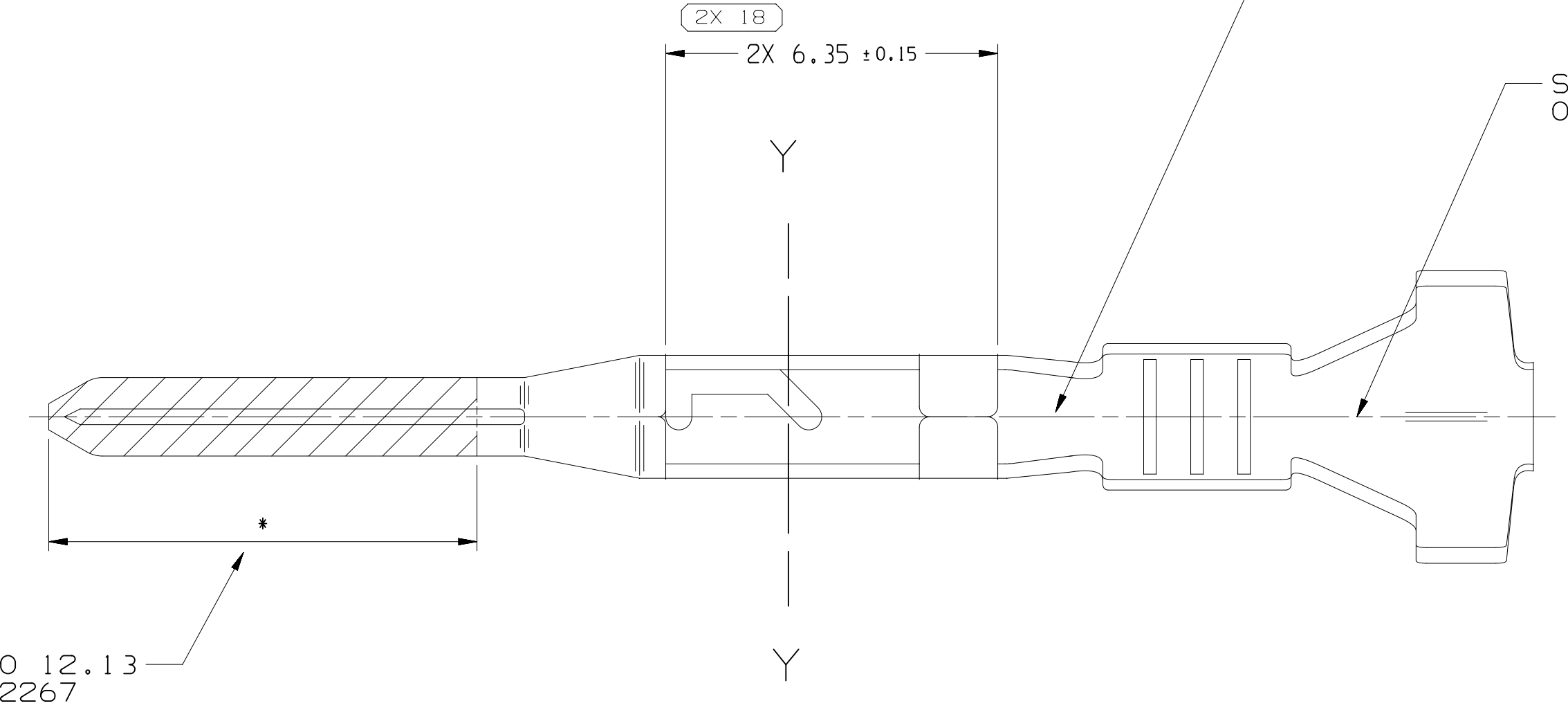
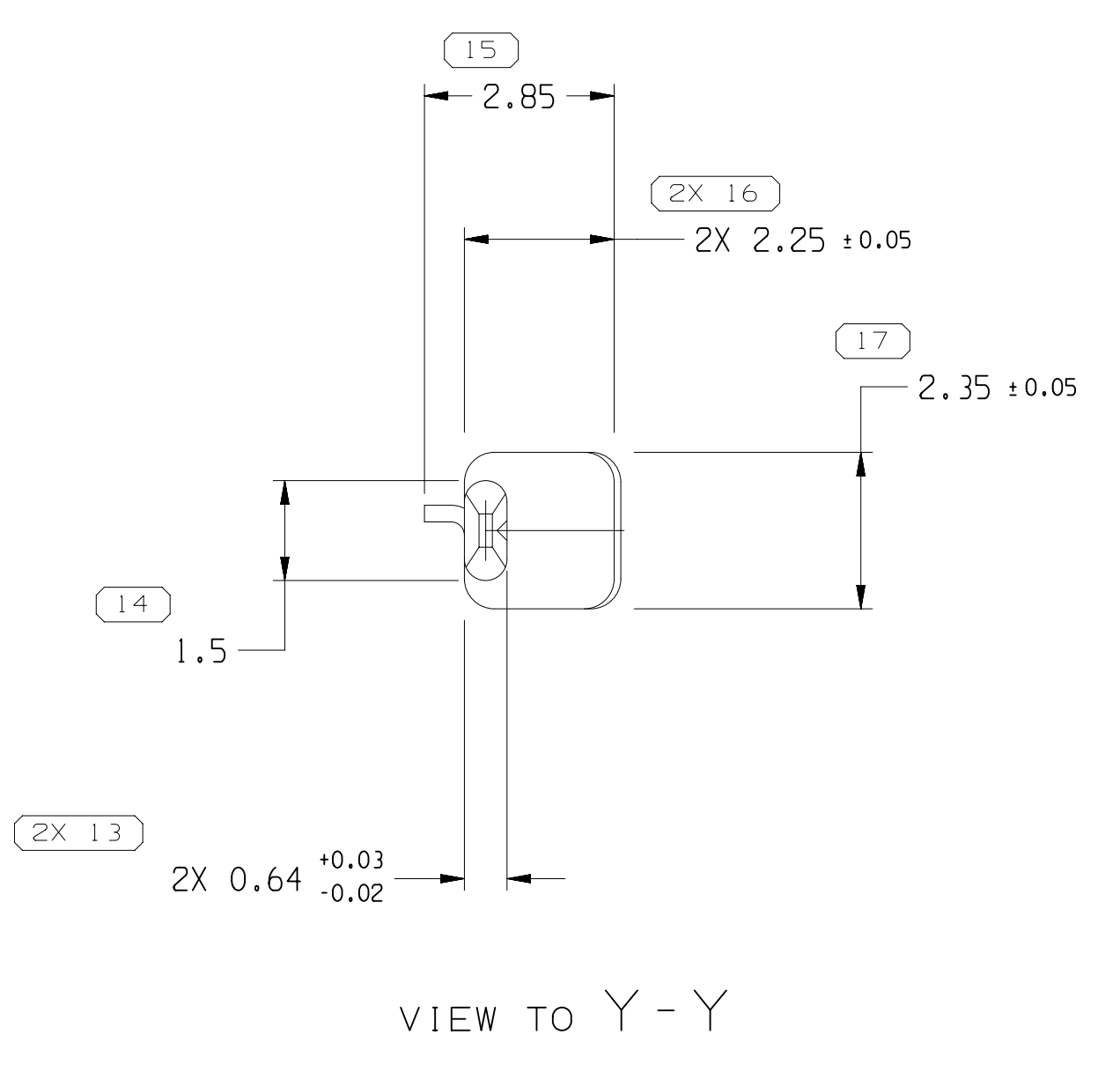
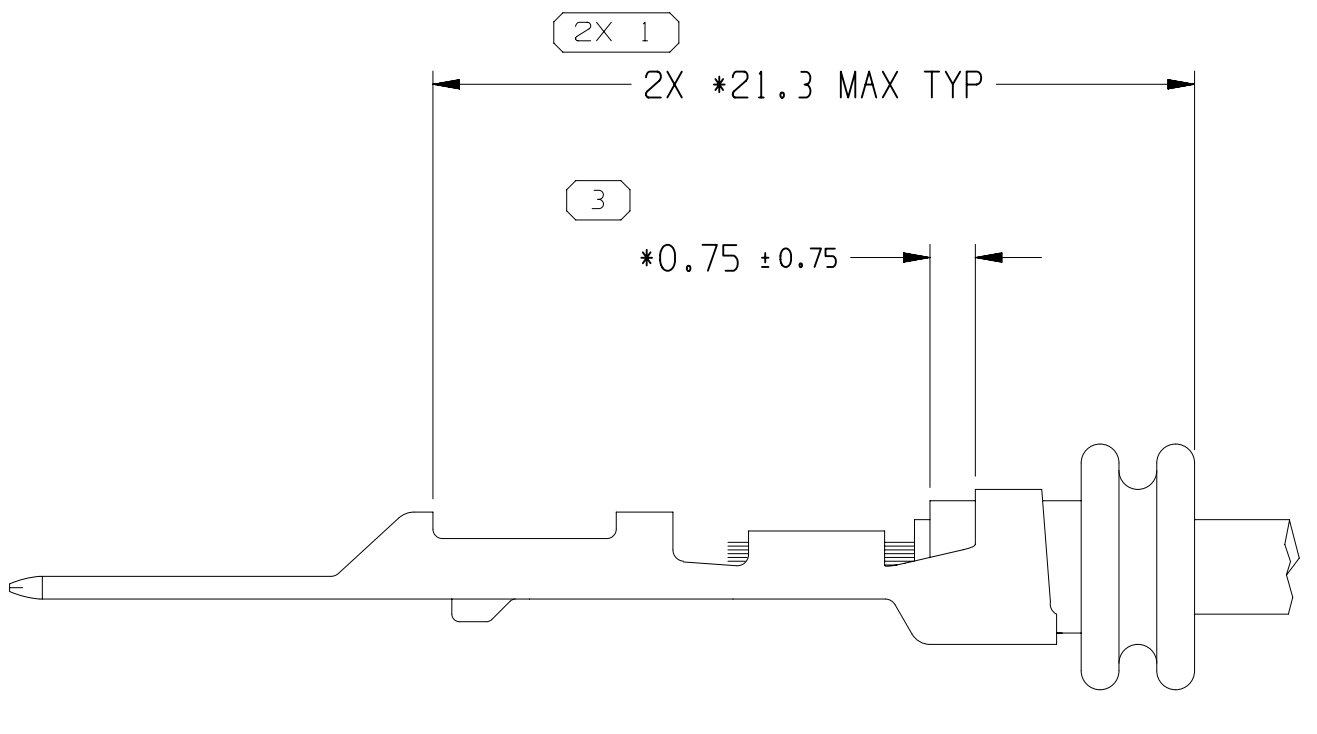


SYMBOL DEFINITION		TOTAL NO OF INSPECTIONS REQUIRED	
A DIMENSION WITHOUT AN INSPECTION REPORT SYMBOL () DOES NOT REQUIRE INSPECTION. IT MAY BE CONTROLLED ON THE INDIVIDUAL COMPONENT DRAWING.		22	
	LAST NO. USED	19	

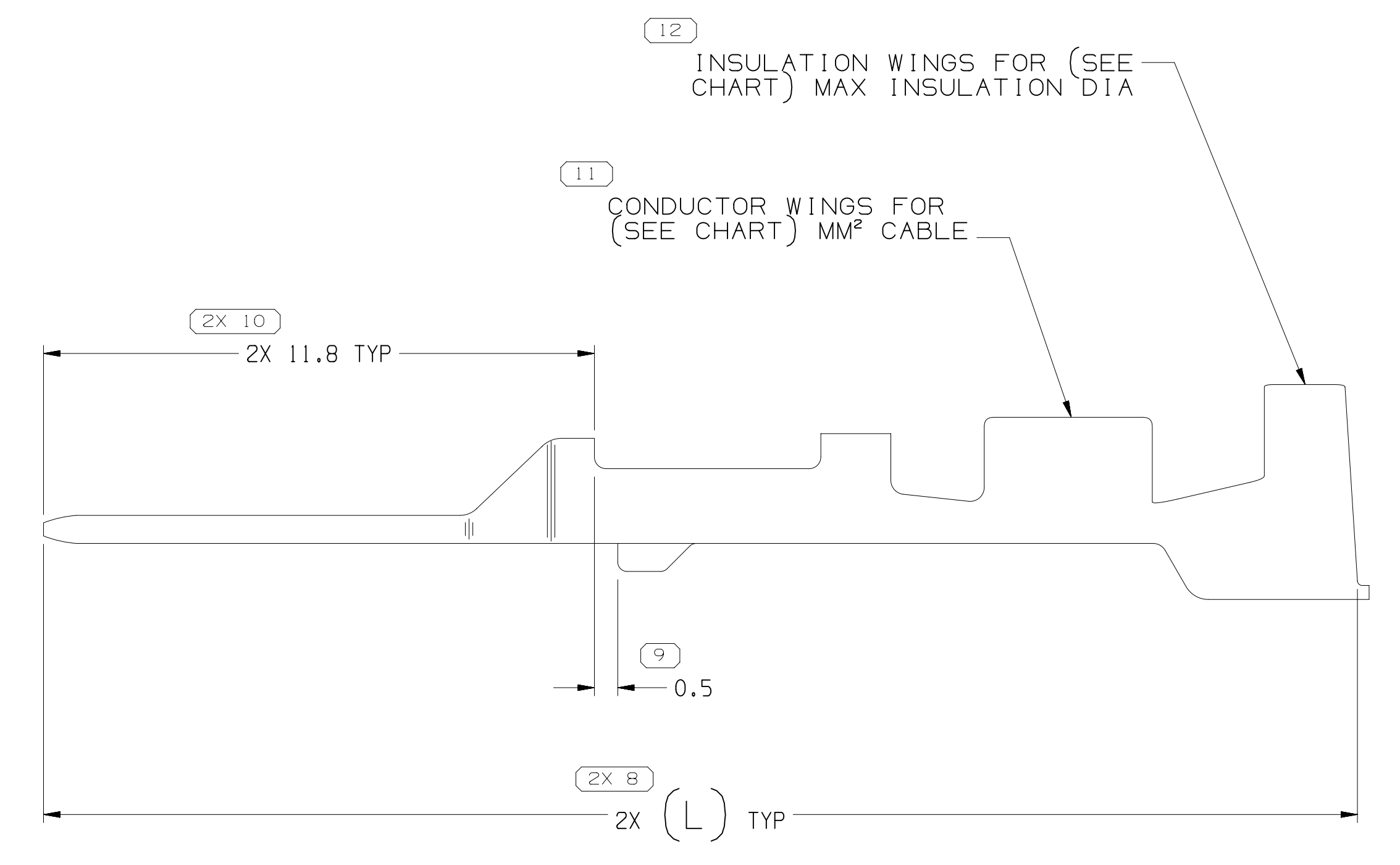
MISSING SYMBOLS		REVISION HISTORY		AUTH		DR		APVD	
DATE	STG	REV	N/P	CHG	ZONE				
31.JUL.02	R	05	-	-		CLEARED REV COLUMN; RELEASED 15443663	228344	CJP	CJP
17.OCT.02	R	06	-	-		ALL PARTS - UPDATED PDM ATTRIBUTES	227307	EVV	EVV
25.FEB.03	R	07	-	-		15443663 - OBSOLETE	237063	MAC	MAC
16.APR.03	R	08	-	-		ALL PARTS - ADDED APPLICATION, TYPICAL CABLE SEAL AND TYPICAL SEALING CAVITY CONFIG TO CHART	239445	TLD	TLD
20.JUL.03	R	09	-	-		15326268, 15326269, 15355561, AND 15373413 - ADDED TERMINAL MAKE STRAIGHTNESS AND TERMINAL CRIMP STRAIGHTNESS VIEWS.	242518	BRB	BRB
01.MAR.04	R	10	-	-		15373413 - UPDATED PDM ATTRIBUTES	252269	EES	EES
04.OCT.04	R	11	-	-		153262668 - 69, 15355563 & 15373413 - ADDED STAMP DIE I.D.	259308	OPS	JVM
22.SEP.08	R	12	-	-		13722265 & 13722267 - RELEASED	406110	JOA	FKV
01.DEC.08	R	13	-	-		15326268, 15326269, 15355563, 15373413 - UPDATED MATERIAL CALLOUT	406833	MH	PYP
18.MAR.09	R	14	-	-		13722265 & 13722267 - UPDATED PDM	407578	LVR	FKV
16.OCT.09	R	15	-	-		13722265 & 13722267 - ADDED LABEL OF SILVER PLATING ZONE	409243	FKV	FKV
29.MAR.10	R	16	-	-		ALL ACTIVE PARTS - UPDATED PDM	410409	FRE	FRE
16.AUG.10	R	17	-	-		ALL ACTIVE PARTS - ADDED PLATING NOTE, UPDATED MAT'L CALLOUT AND ADDED CONTACT AREA & CRIMP AREA COLUMNS ON CHART	411632	JRL	JRL
06.OCT.10	R	18	-	-		ALL ACTIVE PARTS - UPDATED PLATING NOTES	412129	CBG	CBG
23.AUG.11	R	19	-	-		ALL ACTIVE PARTS - ALTERNATIVE MAT'L SIZE WAS MAT'L SIZE AND ADDED PREFERRED MAT'L SIZE COLUMN	415183	AGM	JVM
28.SEP.11	R	20	-	-		13722265-67 - ALTERNATIVE MAT'L SIZE WAS 0.3 X 35.75 AND PREFERRED MAT'L SIZE WAS EMPTY	415603	BLG	BLG
16.OCT.14	R	21	-	-		13722265 & 13722267 - REVISED NOTE 11 ABOUT "TARNISH INFO" IN PLATING TYPE NOTE	427927	ABH	JVM
14.JUL.21	R	22	-	-		ALL ACTIVE PARTS - CHANGED PSD TO DIM #17 (WAS DIM #10)	554720	JLL	JAA



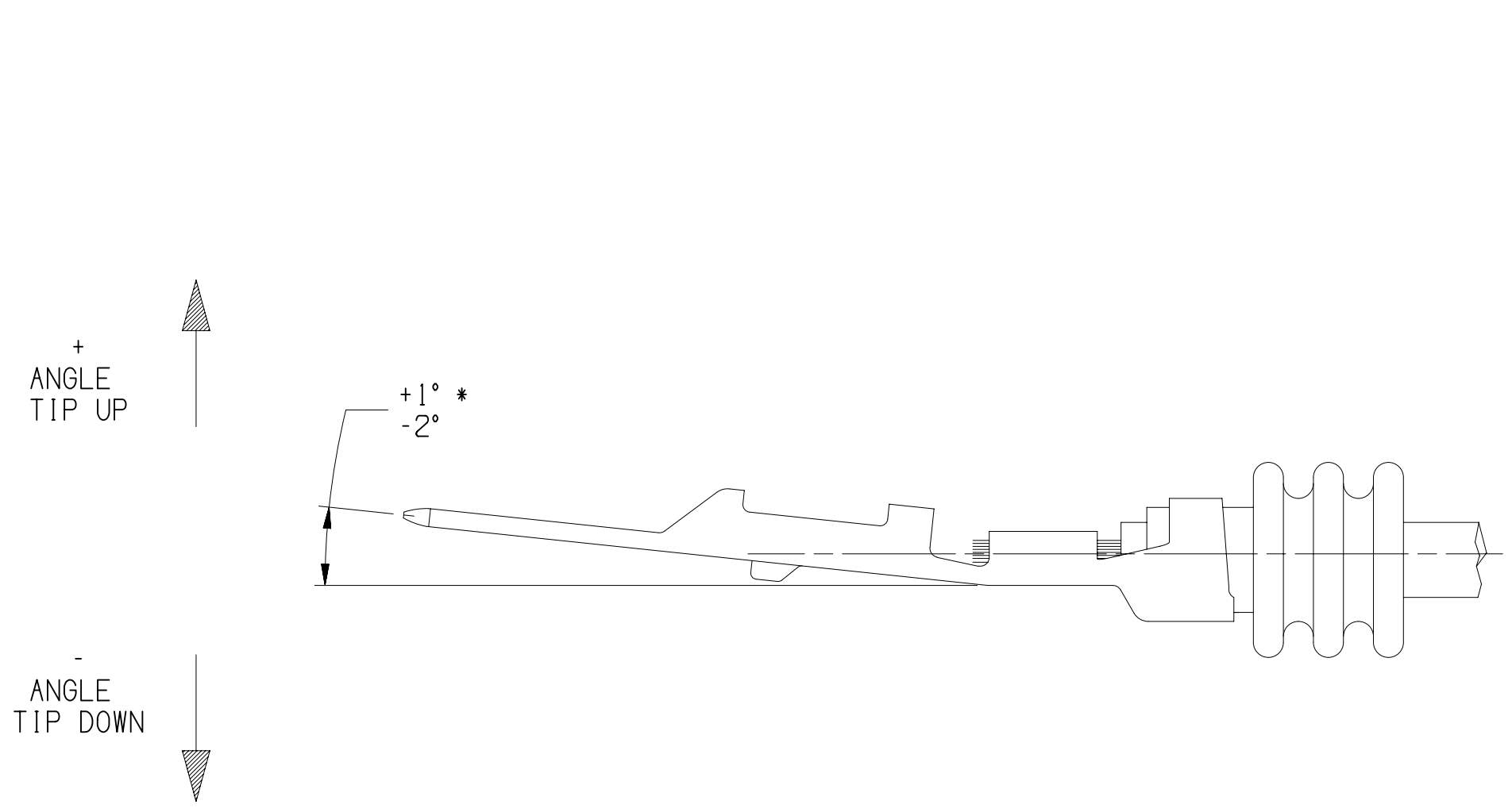
19 SILVER PLATING 8.19 TO 12.13 FOR 13722265 AND 13722267



TWO RIB SEAL POSITION REF
SCALE 5:1



TERMINAL ALIGNMENT (TERMINAL MAKE)
MEASURED FROM BOTTOM OF CORE CRIMP
SCALE 5:1



TERMINAL, SEAL AND CABLE ALIGNMENT
MEASURED FROM BOTTOM OF CORE CRIMP
SCALE 5:1

- NOTES
- UNLESS OTHERWISE SPECIFIED AND/OR INDICATED: DIMENSIONS ARE TO FACE OF VIEW SHOWN AND AUTOMATICALLY ROUNDED BY COMPUTER FOR INSPECTION (SEE MATH MODEL FOR PRECISE DIMENSIONS). FOR ALL OTHER DIMENSIONS NOT SHOWN BUT REQUIRED FOR TOOL BUILD, SEE MATH MODEL FOR PRECISE TOOL PATH DATA.
 - REFERENCE MATING COMPONENTS OR EQUIVALENT: TERMINAL 12191818
 - * DENOTES DIMENSIONS MADE AT CUT OFF AND CRIMP DIE.
 - PLATING TYPE:
 - REFLOW TIN 1.9-3.3 MICROMETERS THICK WITH A COPPER UNDERPLATE 0.5 MICROMETER TO 1.0 MICROMETER THICK.
 - SILVER 3.5-6.0 MICROMETERS THICK OVER 0.13-0.25 MICROMETERS THICK NICKEL UNDERPLATE.

FOR TERMINALS PACKAGED & STORED IN THE APPROVED MANNER, TARNISH ON SILVER PLATED SURFACES WILL NOT AFFECT THE PERFORMANCE OF THE PART.

 - MATE TIN ELECTROPLATE 1.9-7.0 MICROMETERS THICK WITH A NICKEL UNDERPLATE 0.13-0.25 MICROMETERS THICK.
- PLATING TYPE INFORMATION SHOWN ABOVE IS REFERENCE ONLY. PLATING REQUIREMENTS ARE CONTAINED IN APPLICABLE MATERIAL SPECIFICATION.

PART NO	REV	N/P	PREFERRED MAT'L SIZE	ALTERNATIVE MAT'L SIZE PLATED	MAT'L DESCRIPTION	SIZE (MM²)	ID	DIA	TYPE	B _{10.2}	(L)	APPLICATION	TYPICAL CABLE SEAL	TYPICAL SEALING CAVITY CONFIGURATION	CONTACT AREA PLATING TYPE (SEE NOTE 14)	CRIMP AREA PLATING TYPE (SEE NOTE 14)
13722267	01	AJ	0.3 X 35.75	-	AG PLATED COPPER ALLOY	0.35 - 0.5	21	1.85 - 1.2±0.15	201	2.1	28.15	SEALED (GT)	12191226 OR EQUIVALENT	Ø 4 ROUND	II	III
13722265	01	AJ	0.3 X 35.75	-	AG PLATED COPPER ALLOY	0.75 - 1	17	2.25 - 1.7±0.15	201	2.65	28.15	SEALED (GT)	12191227 OR EQUIVALENT	Ø 4 ROUND	II	III
15443663	01	AC	-	0.3 X 36.12	-	0.75 - 0.8	19	2.02 - 1.7	201	2.65	28.15	SEALED (MINI)	15305351 OR EQUIVALENT	3.2 X 4 OVAL	-	-
15373413	01	AN	0.3 X 35.75	0.3 X 36.12	COPPER ALLOY	0.75 - 0.8	18	2.02 - 1.7	201	2.65	28.15	SEALED (MINI)	15305351 OR EQUIVALENT	3.2 X 4 OVAL	-	-
15355563	01	AM	0.3 X 35.75	0.3 X 36.12	COPPER ALLOY	0.35 - 0.5	21	1.85 - 1.2	201	2.1	28.15	SEALED (MINI)	12191229 OR EQUIVALENT	Ø 4 ROUND	-	-
15326269	02	AL	0.3 X 35.75	0.3 X 36.12	COPPER ALLOY	0.75 - 1	17	2.25 - 1.7±0.15	201	2.65	28.15	SEALED (GT)	12191227 OR EQUIVALENT	Ø 4 ROUND	-	-
15326268	02	AL	0.3 X 35.75	0.3 X 36.12	COPPER ALLOY	0.35 - 0.5	21	1.85 - 1.2±0.15	201	2.1	28.15	SEALED (GT)	12191226 OR EQUIVALENT	Ø 4 ROUND	-	-

(17) PROCESS SENSITIVE DIMENSION

INDICATES THAT PHYSICAL PARTS ARE NOT AVAILABLE FOR ORDERING.

INDICATES THAT PHYSICAL PARTS ARE AVAILABLE FOR ORDERING.

PART NUMBERS THAT DO NOT HAVE A LINE PRESENT INDICATE THAT PHYSICAL PARTS ARE AVAILABLE FOR ORDERING.

CONTACT APTIV SALES TO ASSURE AVAILABILITY OF PARTS.

UNLESS OTHERWISE SPECIFIED THIS DOCUMENT IS IN ACCORDANCE WITH ASME Y14.5M-1994 AS MODIFIED BY THE 2003 DIMENSIONING AND TOLERANCING ADDENDUM - 1997. ALL GEOMETRIC TOLERANCES AND RELATED SURFACE PROPERTIES SHALL BE INTERPRETED FROM THE UNLESS ESTABLISHED BY ORIENTATION OR LOCATION TOLERANCES. SEPARATE POSITION CALLOUTS MAY BE GAGED SEPARATELY. ALL DIMENSIONS ARE IN MILLIMETERS.

THIRD ANGLE PROJECTION

DO NOT SCALE

USE MATH DATA

ANGULAR TOLERANCE ±2°

APTIV
CONNECTION SYSTEMS
WARREN, OH

COPYRIGHT 1997 APTIV. ALL RIGHTS RESERVED.

THIS DRAWING IS THE PROPERTY OF APTIV AND CONTAINS APTIV CONFIDENTIAL INFORMATION. THE REPRODUCTION, DISTRIBUTION AND UTILIZATION OF THIS DOCUMENT OR ITS RELATED CAD DATA, AS WELL AS COMMUNICATION OF ANY CONTENT TO OTHERS, WITHOUT EXPRESS AUTHORIZATION, IS PROHIBITED.

DATE: 18AP97

DR: H. CASTRILLON

APVD: PEDRO YABUR

APVD: S.C. HSIEH

APVD: 24AP97

APVD: 12MY97

SUBSTANCES OF CONCERN AND RECYCLED CONTENT PER APTIV 10949001

MATERIAL: TAXI TERM M GT 150 SEALED

DRAWING NUMBER: 15304703

SIZE: A0

SCALE: 10:1

FRAME NO: 1

SHEET NO: 1

STG: R

REV: 22

N/P: -