

PART NUMBERS				ASSEMBLY PART NUMBER CHART									
DELPHI	REV	MVL	KEY OPTION	ITEM 1		ITEM 2		ITEM 3	ITEM 4	NO	DELPHI	MVL	MVL
				INSULATOR HOUSING1	PA66 GF 35	TPA	PA66 GF 35	RING SEAL	CPA (RED)				
13841589	01	F339700	A	A	33509526 BLACK	DK GREY	33509815	F129600	SILICONE	PA66 GF35			
13856355	01	F619600	A	A		GREY	33509815	F129600					
33513451	01	F719600	A	B	DELPHI	NATURAL	33509816	F229600			DELPHI	33509795	
33513452	01	F819600	A	C	DELPHI	TBD	33509817	F329600			DELPHI	33509795	
33513453	01	F919600	A	D		TBD	33509818	F429600					
33513454	02	F264310	B	A	MVL	GREY	33509815	F129600			MVL	C629600	
33513455	02	F737310	B	B	NATURAL	33509816	F229600				DELPHI	33503756	
		TBD	-	C	BLACK	TBD	33509817	F329600					
		TBD	-	D		TBD	33509818	F429600					
35059595	01	-	A	A	33509526 BLACK	DK GREY	33509815	F129600			MVL	F752210	

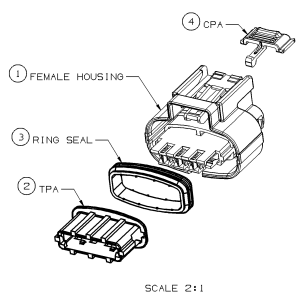
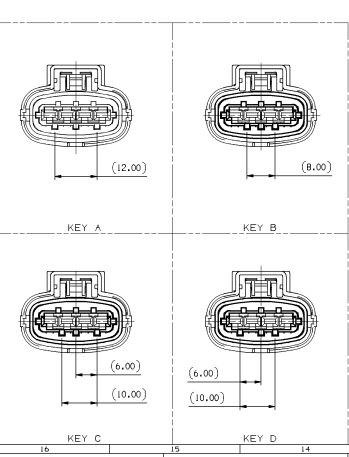
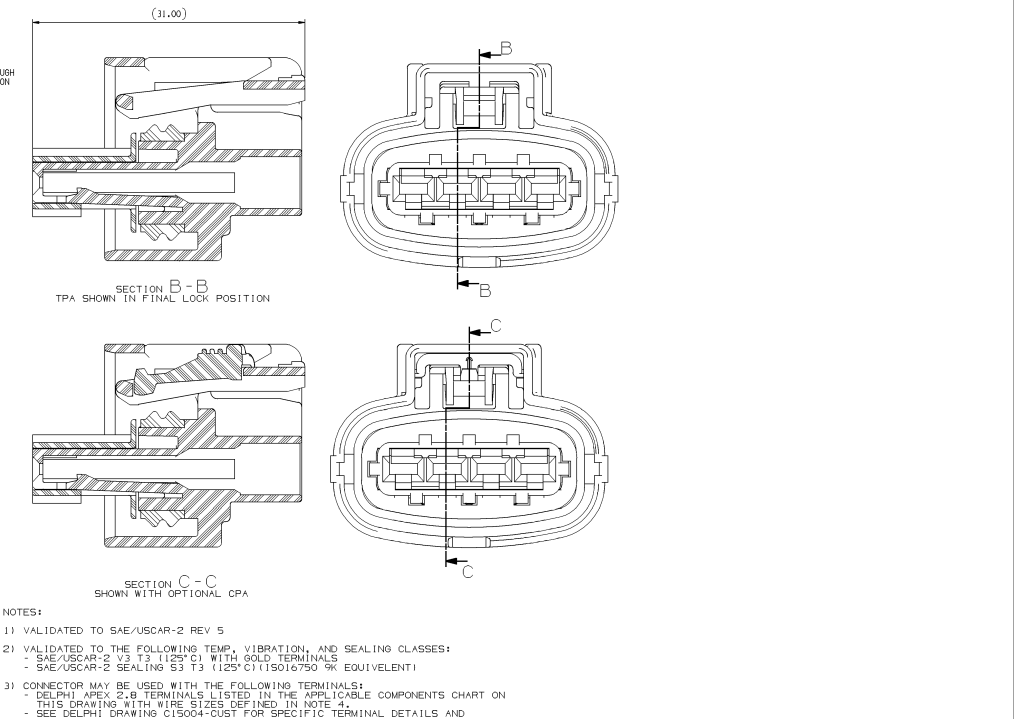
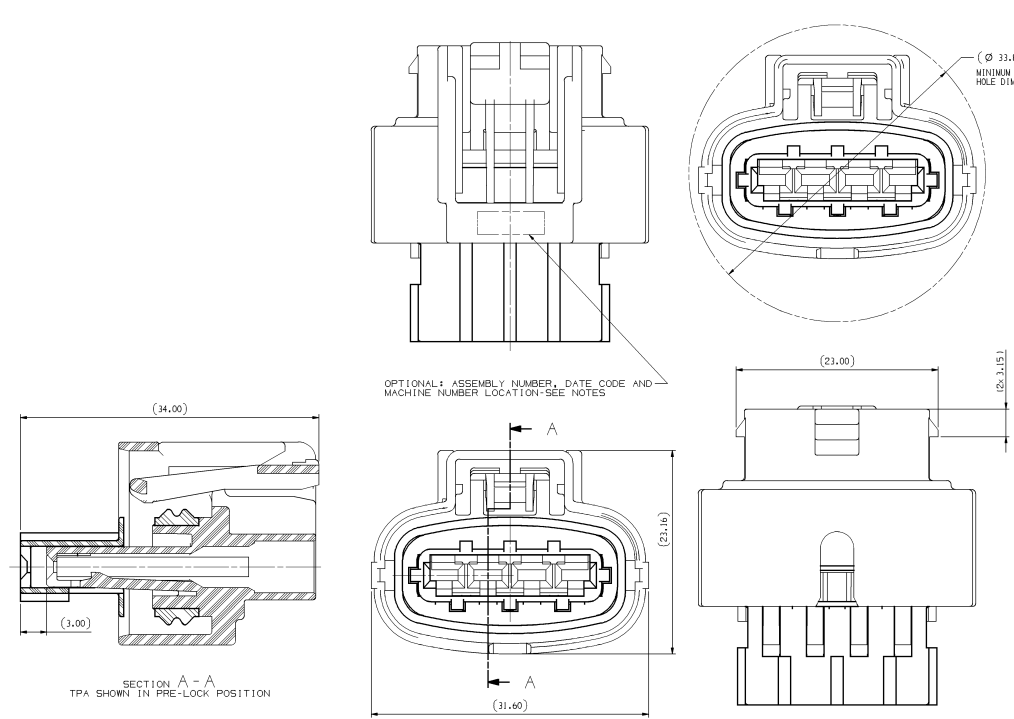
ITEM NO.	DESCRIPTION	PLATING OR COLOR	APPLICABLE COMPONENTS CHART		WIRE SIZE	WIRE INSULATION DIAMETER RANGE	MATERIAL/SPEC NO.	
			SUPPLIER NAME	NUMBER				
5	2.8mm SEALED SYSTEM TERMINAL (F)	TIN	DELPHI	10810375	1B	20-18 AWG 0.50-1.00mm ²	1.40mm-2.13mm	COPPER ALLOY / NA
	2.8mm SEALED SYSTEM TERMINAL (F)	TIN	MVL	54001807	14	16-14 AWG 1.50-2.50mm ²	2.18mm-3.00mm	COPPER ALLOY / NA
	2.8mm SEALED SYSTEM TERMINAL (F)	GOLD	MVL	54001404	14	20-18 AWG 0.50-1.00mm ²	1.40mm-2.13mm	COPPER ALLOY / NA
	2.8mm SEALED SYSTEM TERMINAL (F)	GOLD	MVL	54001410	14A	16-14 AWG 1.50-2.50mm ²	2.18mm-3.00mm	COPPER ALLOY / NA
6	2.80mm SYSTEM CABLE SEAL	GREEN	MVL	F576000	13791654	20-18 AWG 0.50-1.00mm ²	1.40mm-2.13mm	SILICONE
	2.80mm SYSTEM CABLE SEAL	BLUE	MVL	F576000	13948985	16-14 AWG 1.50-2.50mm ²	2.18mm-2.80mm	SILICONE
	2.80mm SYSTEM CABLE SEAL	YELLOW	MVL	60994034	10779161	2.5mm ²	2.70mm-3.00mm	SILICONE
7	2.80MM SYSTEM CAVITY PLUG	WHITE	DELPHI	-	15305170	OPTIONAL AS REQUIRED		SILICONE



SCALE 1:1



SCALE 1:1



- NOTES:
- VALIDATED TO SAE/USCAR-2 REV 5
 - VALIDATED TO THE FOLLOWING TEMP, VIBRATION, AND SEALING CLASSES:
 - SAE/USCAR-2 V3 T3 (125°C) WITH GOLD TERMINALS
 - SAE/USCAR-2 SEALING S3 T3 (125°C) (15016750) 9K EQUIVALENT
 - CONNECTOR MAY BE USED WITH THE FOLLOWING TERMINALS:
 - DELPHI MEXX 2-B TERMINALS LISTED IN THE "APPLICABLE COMPONENTS CHART ON THIS DRAWING WITH WIRE SIZES DEFINED IN NOTE 4.
 - SEE DELPHI DRAWING C15004-C05T FOR SPECIFIC TERMINAL DETAILS AND CRIMPING REQUIREMENTS
 - PLATING OF TERMINALS AND MATING DEVICE BLADES MUST BE COMPATIBLE SEE NOTE 5
 - EXCESSIVELY THICK TIN PLATING ON DEVICE BLADES IS NOT RECOMMENDED
 - CONNECTOR SYSTEM VALIDATED TO USCAR-2 REQUIREMENTS WITH THE FOLLOWING RANGE OF WIRE SIZES AND TYPES IN CONJUNCTION WITH APPROPRIATE COMPONENTS FOUND IN THE "APPLICABLE COMPONENTS" CHART:
 - AWG - WIRE SIZES: 20AWG - 14AWG
 - INSULATION DIAMETER: 1.70mm MIN - 2.77mm MAX
 - WIRE TYPE: MIL-123-A, MS-8088 OR EQUIVALENT (STRUCTURE AND PROPERTIES ACCORDING TO SAE J1128)
 - METRIC - WIRE SIZE: 0.50mm² - 2.50mm²
 - INSULATION DIAMETER: 1.40mm MIN - 3.00mm MAX
 - WIRE TYPE: FLR2X-A OR EQUIVALENT (STRUCTURE AND PROPERTIES ACCORDING TO ISO 6722)
- CONTACT DELPHI ENGINEERING REGARDING USE OF OTHER WIRE SIZES AND/OR TYPES WIRE AND INSULATION TYPE MUST BE APPROPRIATE FOR TEMPERATURE CLASS & APPLICATION ENVIRONMENT
- CONNECTOR IS MATE COMPATIBLE WITH DEVICES CONFORMING WITH THE FOLLOWING INTERFACE SPECIFICATIONS:
 - BOSCH DWG 192850000 VARIANT A
 - GM DWG 13115604
- FOR CONSTRUCTION OF NEW DEVICES, SEE SHEET 2 FOR INTERFACE DETAILS.
- NOTE: EXCESSIVELY THICK TIN PLATING ON DEVICE BLADES IS NOT RECOMMENDED, SEE ENCAP-001 (280-1001) BLADE SPECIFICATION FOR PREFERRED PLATING
- DEVICE SUPPLIERS RESPONSIBLE FOR VALIDATING PERFORMANCE OF DEVICE TO SAE/USCAR-2 REV 5
- ANNUAL QUALITY REQUIREMENTS:
 - IT IS IMPERMISSIBLE TO PERFORM CONTINUOUS COMPLIANCE PER DELPHI SPECIFICATION #AA-001 INSTEAD OF ANNUAL LAYOUT AND ANNUAL PV REQUIREMENTS OF ISO TS16949 AND SAE/USCAR-2 REV 5, FOR TERMINAL TO CONNECTOR AND TPA TO CONNECTOR ONLY.
 - SOURCE ID, MOLD & CAVITY ID SIGNIFIES TOOL OWNERSHIP, FOR REFERENCE
 - Ø INDICATES IN-PROCESS INSPECTION FOR MANUFACTURING DIMENSIONS OR SPECIFICATIONS.

DWG STATUS				REVISION HISTORY		AUTH	DR	APP/PRO
DATE	ISSUED BY	REV	CODE	DESCRIPTION	DATE	BY	CHK	APP/PRO
19/01/17	R	02	-	FILE TRANSLATED FROM MVL SYSTEM AND REDRAWN IN REV WITH MISSED CPN 13841589				DAVID/DAVID
12/01/17	R	03	-	ADDED PART NUMBER 35059595				435850 SM SM JHE

DELPHI
DELPHI PACKAGED ELECTRICAL/ELECTRONIC ARCHITECTURE

THIS DRAWING IS THE PROPERTY OF DELPHI CORPORATION. NO REPRODUCTION OR TRANSMISSION OF THIS DOCUMENT OR ITS CONTENTS IS PERMITTED WITHOUT EXPRESS AUTHORIZATION BY DELPHI CORPORATION.

DATE: 19/01/17
PART DRAWING
SCALE: 1:1

UNLESS OTHERWISE SPECIFIED
THIS DRAWING IS IN CONFORMANCE WITH THE 1:1 AND 2:1 DIMENSIONAL TOLERANCE SPECIFICATIONS OF THE 1993 EDITION OF THE ASME Y14.5M DIMENSIONAL PRACTICES AND TOLERANCE DESIGN AND DIMENSIONING MANUAL.

ALL DIMENSIONS ARE IN MILLIMETERS

REFERENCE: PCC062741B

THIRD ANGLE PROJECTION

DO NOT SCALE

SCALE: 1:1

DATE: 19/01/17

DR: PPA, SELVYARAJ
APP: MATT MALONE
APP: SUGHA SIAN
APP: BOB CUE

DATE: 31/08/09
19/01/13
19/01/13

ISSUED BY: PPA
SUBSTANCES OF CONSENT AND RECEIVED CONTENT PER DELPHI 1094902

DRAWING NAME: TAXI CONN

DRAWING NUMBER: 13856956

SHEET: 1 OF 1