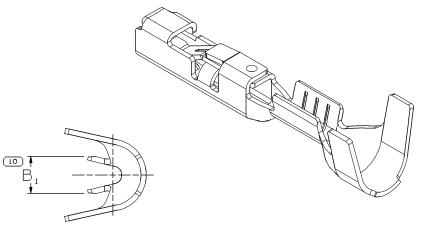
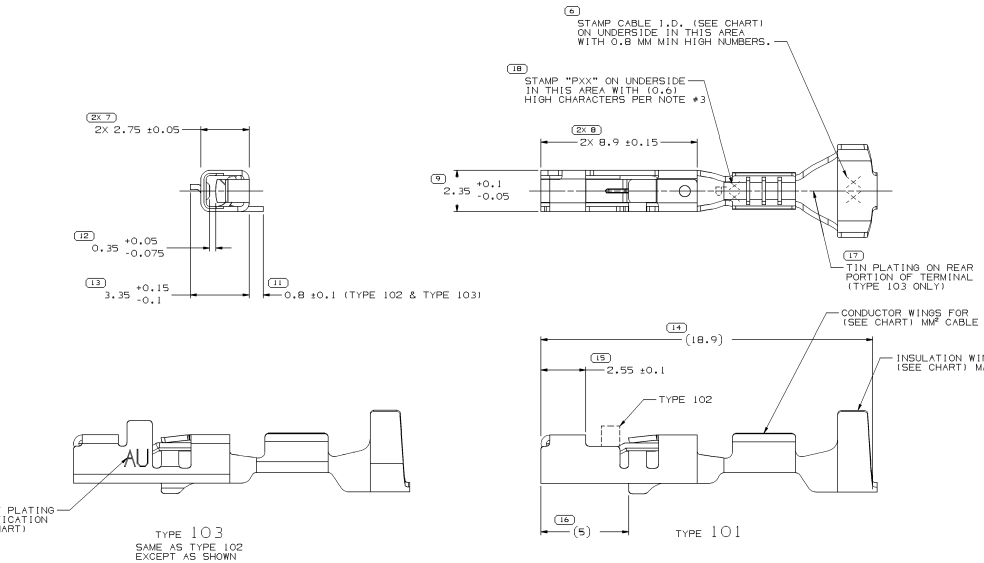


DATE	ISSUED BY	DATE	ISSUED BY	DATE	ISSUED BY	DATE	ISSUED BY	DATE	ISSUED BY
06/03/02	R	05	-	-	-	-	-	-	-
05/03/02	R	06	-	-	-	-	-	-	-
03/14/03	R	08	-	-	-	-	-	-	-
13/24/04	R	09	-	-	-	-	-	-	-
16/10/04	R	10	-	-	-	-	-	-	-
16/05/05	R	11	-	-	-	-	-	-	-
20/06/06	R	12	-	-	-	-	-	-	-
02/06/08	R	13	-	-	-	-	-	-	-
07/02/08	R	14	-	-	-	-	-	-	-
13/02/08	R	15	-	-	-	-	-	-	-
10/06/10	R	16	-	-	-	-	-	-	-
09/10/10	R	17	-	-	-	-	-	-	-
08/06/10	R	18	-	-	-	-	-	-	-
04/11/11	R	19	-	-	-	-	-	-	-
23/11/11	R	20	-	-	-	-	-	-	-
10/14/12	R	21	-	-	-	-	-	-	-
16/11/12	R	22	-	-	-	-	-	-	-



- NOTES
- UNLESS OTHERWISE SPECIFIED AND/OR INDICATED: DIMENSIONS ARE TO FACE OF VIEW SHOWN AND AUTOMATICALLY ROUNDED BY COMPUTER FOR INSPECTION (SEE MATH MODEL FOR PRECISE DIMENSIONS). FOR ALL OTHER DIMENSIONS NOT SHOWN BUT REQUIRED FOR TOOL BUILD, SEE MATH MODEL FOR PRECISE TOOL PATH DATA.
  - "\*" DENOTES DIMENSIONS MADE AT CUT-OFF AND CRIMP DIE.
  - "PXXX" INDICATES "P" PLUS LAST TWO DIGITS OF MAKE DIE SERIES NUMBER (P01, P02, P03, ETC). STAMP MAY BE IN ANY CONFIGURATION. (0,6) HIGH TRIANGULAR CONFIGURATION IS PREFERRED.
  - REFERENCE MATING COMPONENTS OR EQUIVALENT: TERMINAL - 15304704
  - DO NOT PROBE, TEST OR OTHERWISE CONTACT THE INTERIOR REGION (THE SPRINGS OR ANY MOVING PARTS) OF THIS TERMINAL. SEVERE DAMAGE CAN OCCUR, COMPROMISING THE PERFORMANCE OF THE ELECTRICAL INTERFACE.
  - PLATING TYPE:
    - REFLOW TIN 1.9 - 3.3 MICROMETERS THICK WITH A COPPER UNDERPLATE 0.5 MICROMETER TO 1.0 MICROMETER THICK.
    - MATE TIN ELECTROPLATE 1.9 - 7.0 MICROMETERS THICK.
    - 1.27 MICROMETERS DIFFUSED GOLD/PALLADIUM/SILVER ALLOY INLAY OVER 1.27 MICROMETERS THICK NICKEL UNDERLAY.
- PLATING TYPE INFORMATION SHOWN ABOVE IS REFERENCE ONLY. PLATING REQUIREMENTS ARE CONTAINED IN APPLICABLE MATERIAL SPECIFICATION.

PART NO.	REV IN/P	PREFERRED MAT'L	SIZE	ALTERNATIVE MAT'L	SIZE	MATERIAL DESCRIPTION	SIZE	MMF	DIA	TYPE	APPLN	TYPICAL CABLE SEAL OR EQUIVALENT	TYPICAL SEALING CAVITY CONFIG	RESTRICTED USAGE	REPLACED BY			
15454820	02	-	0.3 x 26.71	0.3 x 27.38		GOLD PLATED COPPER	0.35 - 0.5	21	1.85 - 1.2	103	2.1	SEALED (150MP)	SEE TAXI 12010295	Ø 5.2 ROUND	-	-	-	-
15360291	01	AK	0.3 x 26.71	0.3 x 27.38		SN PLATED COPPER	1.1 - 1.5	151	2.4 - 1.9	101	2.95	SEALED (GT)	15360660	Ø 4 ROUND	RESTRICTED	-	-	-
15305350	C18	-	0.3 x 26.71	0.3 x 27.38		SN PLATED COPPER	0.75 - 0.8	18	2.02 - 1.7	101	2.65	SEALED (MINI)	15305351	3.2 x 4 OVAL	RESTRICTED	15302627	-	-
15305130	C18	-	0.3 x 26.71	0.3 x 27.38		SN PLATED COPPER	0.35 - 0.5	21	1.85 - 1.2	101	2.1	SEALED (MINI)	15366022	3.2 x 4 OVAL	RESTRICTED	15302626	-	-
15305038	C16	-	0.3 x 26.71	0.3 x 27.38		SN PLATED COPPER	0.75 - 1	17	2.25 - 1.7	102	2.65	SEALED (150MP)	SEE TAXI 12010295	Ø 5.2 ROUND	RESTRICTED	-	-	-
15305037	C16	-	0.3 x 26.71	0.3 x 27.38		SN PLATED COPPER	0.35 - 0.5	21	1.85 - 1.2	102	2.1	SEALED (150MP)	SEE TAXI 12010295	Ø 5.2 ROUND	RESTRICTED	-	-	-
12191819	D16	-	0.3 x 26.71	0.3 x 27.38		SN PLATED COPPER	0.75 - 1	17	2.25 - 1.7	101	2.65	SEALED (GT)	15366060	Ø 4 ROUND	-	-	-	
12191818	D16	-	0.3 x 26.71	0.3 x 27.38		SN PLATED COPPER	0.35 - 0.5	21	1.85 - 1.2	101	2.1	SEALED (GT)	15366021	Ø 4 ROUND	-	-	-	
12191817	D16	-	0.3 x 26.71	0.3 x 27.38		SN PLATED COPPER	0.75 - 1	17	2.25 - 1.7	101	2.65	SEALED (150MP)	SEE TAXI 12010295	Ø 5.2 ROUND	-	-	-	
12191816	D16	-	0.3 x 26.71	0.3 x 27.38		SN PLATED COPPER	0.35 - 0.5	21	1.85 - 1.2	101	2.1	SEALED (150MP)	SEE TAXI 12010295	Ø 5.2 ROUND	-	-	-	

DELPHI  
DELPHI PACKAGED ELECTRICAL/ELECTRONIC ARCHITECTURE

THIS DRAWING IS IN CONFORMANCE WITH THE DELPHI STANDARD DRAWING CONVENTIONS AND SPECIFICATIONS. ANY DEVIATIONS FROM THESE CONVENTIONS AND SPECIFICATIONS WILL BE INDICATED BY A NOTE OR DIMENSION LINE.

UNLESS OTHERWISE SPECIFIED:  
DIMENSIONS ARE IN MILLIMETERS  
DIMENSIONS IN PARENTHESES ARE IN INCHES

DATE: 12/19/15  
DRAWN BY: J. VILLAMIL  
CHECKED BY: ERIC BISHOP  
DATE: 08/05/05  
DATE: 01/29/06

TAXI TERM F 0T 150  
12191815

SIZE: 110 X 110  
SCALE: 1:1  
DATE: 12/19/15