

MATERIAL SPECIFICATIONS

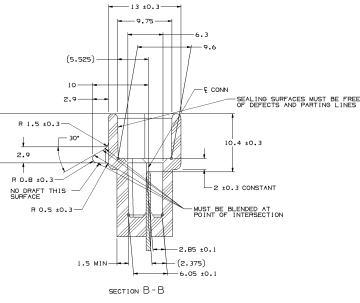
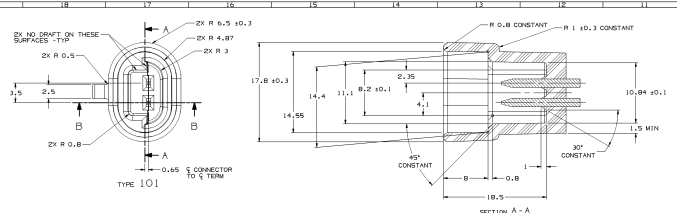
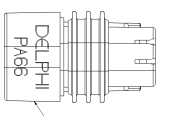
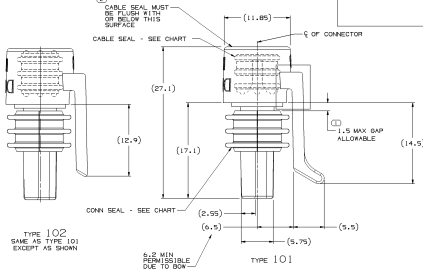
RECOMMENDED

- BASE METAL - COP-210, EXTRA SPRING TEMPER
- TIN PLATING (WHERE APPLICABLE TO LONG MAX CONTINUOUS USAGE) - 0.0005 TO 0.0010 MM (0.000020 IN) ELECTROLYTIC TIN.
- USAGE OF PLATING TYPES OTHER THAN RECOMMENDED MUST BE APPROVED BY DELPHI PACKARD ELECTRIC SYSTEMS ENGINEERING.

MINIMUMS

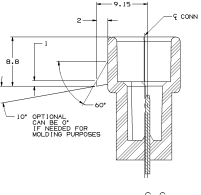
- ELECTRICAL CONDUCTIVITY - JIS B 1405 AT 20 TO USE OF A MATERIAL WITH CONDUCTIVITY 50% LOWER MUST BE APPROVED BY PACKARD ELECTRIC MATERIALS ENGINEERING.
- TENSILE STRENGTH - 430 - 480 MPa
- UNDERPLATING FOR TIN PLATING - FOR BASE MATERIALS CONTAINING 10% OR MORE ZINC, AN UNDERPLATE OF COPPER COVERS AN 100 μm MINIMUM THICK IS REQUIRED.
- PROCESSING LUBRICANT - ANY PROCESSING LUBRICANT REMAINING ON TERMINALS MUST BE REMOVED BY WASHING. THE RESIDUAL CONCENTRATION OF PROCESSING LUBRICANTS MUST BE APPROVED BY DELPHI PACKARD ELECTRIC SYSTEMS ENGINEERING.

MATING BLADE INFORMATION

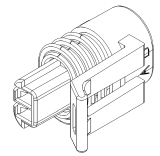


- NOTES**
- UNLESS OTHERWISE SPECIFIED AND/OR INDICATED, DIMENSIONS ARE TO FACE OF TIE BURN AND AUTOMATICALLY ROUNDED BY COMPUTER FOR INSPECTION. USE WITH MODEL FOR PRECISE DIMENSIONS. 1. FOR ALL OTHER DIMENSIONS NOT SHOWN BUT NECESSARY FOR TOOL BUILD-UP, WITH MODEL FOR PRECISE TOOL PATH DATA, USE MODEL.
 - RECOMMENDED MATERIAL: GLASS REINFORCED NYLON OR POLYESTER

MATING CONNECTOR INFORMATION



SYMBOL DEFINITION		MISSING SYMBOLS	
A DIMENSION WITHOUT AN INSPECTION REPORT SYMBOL INDICATES THAT INSPECTION IS REQUIRED. IT MAY BE CONTROLLED ON THE INDIVIDUAL COMPONENT DRAWING.	TOTAL NO. OF INSPECTIONS REQUIRED	2	NO MISSING SYMBOL NUMBER
	USE NO.	2	



- NOTES**
- UNLESS OTHERWISE SPECIFIED AND/OR INDICATED, DIMENSIONS ARE TO FACE OF TIE BURN AND AUTOMATICALLY ROUNDED BY COMPUTER FOR INSPECTION. USE WITH MODEL FOR PRECISE DIMENSIONS.
 - WHEN PARTS ARE SHIPPED THEY MUST BE PACKED IN PLASTIC BAGS OR SHIPPING CONTAINERS MUST BE FILLED WITH PLASTIC LUBRICANT. BAGS OR LINES MUST BE SEALED TO AVOID ENTRY OF FOREIGN MATTER.
 - THIS PROCEDURE IS NOT CATEGORIZED AS AN APPROVED ITEM, WHICH IMPLIES THAT INSPECTION AND QUALITY CONTROL IS REQUIRED TO VERIFY FIT, FORM, OR FUNCTION OF THE PART ARE PERMISSIBLE PER DRMP 47-05-01.
 - FOR LEAD LENGTHS WITH ADHESIVE, DISTANCE FROM MATING END OF CONNECTOR TO FRONT OF CABLE CORE IS 10.75±0.08.
 - FOR PART FINISHED WITH ADHESIVE, USE WOODEN OR ADHESIVE TO CONNECT.
 - FOR APPLICATION DATA SEE THE INDIVIDUAL APPLICATION DRAWINGS.
 - 8-HO-T LUBRICANT LUBRICANT CAN BE USED AS AN AUXILIARY SUPPORT ON THE CABLE INSTALLATION PROCESS.

12162269
 10/18/10 11/12/10 11/12/10 11/12/10

SEE NOTE #5

PART NO	REV	DATE	DESCRIPTION	TYPE	CABLE SEAL AND COLOR	CONN NO	CONN SEAL	RESTRICTED USAGE
12162269	1	11/12/10	12162269 - 001	REVISED				
12162269	2	11/12/10	12162269 - 002	REVISED				
12162269	3	11/12/10	12162269 - 003	REVISED				
12162269	4	11/12/10	12162269 - 004	REVISED				
12162269	5	11/12/10	12162269 - 005	REVISED				
12162269	6	11/12/10	12162269 - 006	REVISED				
12162269	7	11/12/10	12162269 - 007	REVISED				
12162269	8	11/12/10	12162269 - 008	REVISED				
12162269	9	11/12/10	12162269 - 009	REVISED				
12162269	10	11/12/10	12162269 - 010	REVISED				

REV	DATE	DESCRIPTION	BY	CHKD
1	11/12/10	DESIGNED BY DELPHI 12162269 - 001	12162269	12162269
2	11/12/10	DESIGNED BY DELPHI 12162269 - 002	12162269	12162269
3	11/12/10	DESIGNED BY DELPHI 12162269 - 003	12162269	12162269
4	11/12/10	DESIGNED BY DELPHI 12162269 - 004	12162269	12162269
5	11/12/10	DESIGNED BY DELPHI 12162269 - 005	12162269	12162269
6	11/12/10	DESIGNED BY DELPHI 12162269 - 006	12162269	12162269
7	11/12/10	DESIGNED BY DELPHI 12162269 - 007	12162269	12162269
8	11/12/10	DESIGNED BY DELPHI 12162269 - 008	12162269	12162269
9	11/12/10	DESIGNED BY DELPHI 12162269 - 009	12162269	12162269
10	11/12/10	DESIGNED BY DELPHI 12162269 - 010	12162269	12162269

DELPHI
 PACKARD ELECTRIC SYSTEMS ENGINEERING

12162269

10/18/10 11/12/10 11/12/10 11/12/10

12162269

10/18/10 11/12/10 11/12/10 11/12/10