

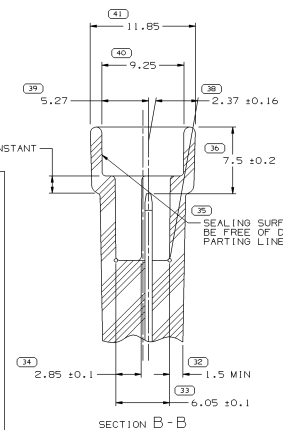
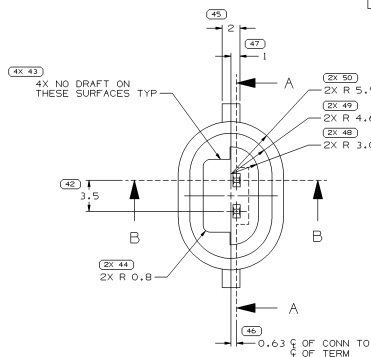
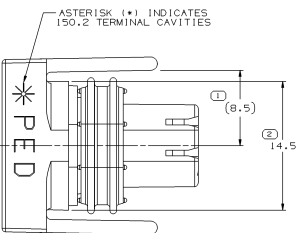
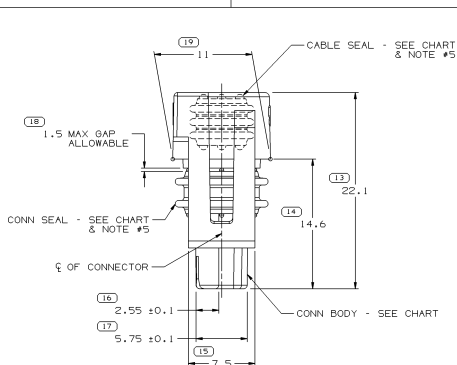
MATERIAL SPECIFICATIONS

RECOMMENDED
 BASE METAL - CDA-210, GILDING, EXTRA SPRING TEMPER
 PLATING - 0.0050±0.0025 MM THICK TIN

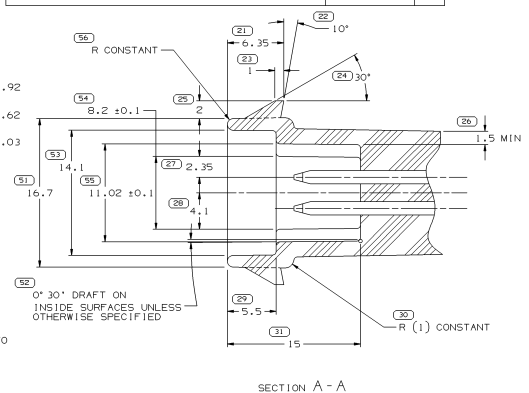
MINIMUMS
 ELECTRICAL CONDUCTIVITY - > 20% IACS @ 20°C. USE OF A MATERIAL WITH CONDUCTIVITY < 20% IACS MUST BE APPROVED BY PACKARD ELECTRIC MATERIALS ENGINEERING.
 TENSILE STRENGTH - 407 MPa
 PLATING - FOR LOW ENERGY (< 5v) AND NON-PASSENGER COMPARTMENT POWER CIRCUITS, 0.0050±0.0025MM THICK TIN. FOR MATERIALS CONTAINING 10% OR MORE ZINC, AN UNDERPLATE OF COPPER 0.0050±0.0025 MM THICK IS REQUIRED.

MATING BLADE INFORMATION

SCALE 10:1
 INSPECTION SYMBOLS SHOWN IN THESE VIEWS ARE FOR REFERENCE ONLY



SYMBOL DEFINITION		MISSING SYMBOLS	
A DIMENSION WITHOUT AN INSPECTION REPORT SYMBOL DOES NOT REQUIRE INSPECTION. IT MAY BE CONTROLLED ON THE INDIVIDUAL COMPONENT DRAWING.	TOTAL NO OF INSPECTIONS REQUIRED	NO MISSING SYMBOL NUMBER	
	65		
	LAST NO. USED		
	56		

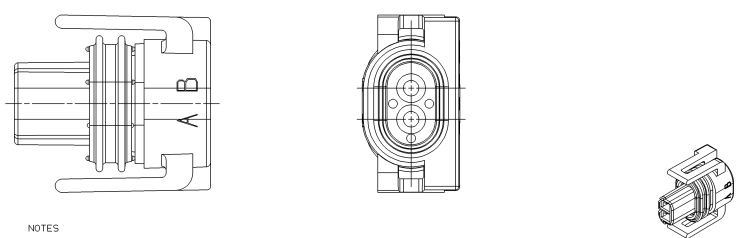


SECTION A-A

- NOTES**
- UNLESS OTHERWISE SPECIFIED AND/OR INDICATED: DIMENSIONS ARE TO FACE OF VIEW SHOWN AND AUTOMATICALLY ROUNDED BY COMPUTER FOR INSPECTION (SEE MATH MODEL FOR PRECISE DIMENSIONS). FOR ALL OTHER DIMENSIONS NOT SHOWN BUT REQUIRED FOR TOOL BUILD, SEE MATH MODEL FOR PRECISE TOOL PATH DATA. ALL RADII 0.4. DRAFT IS 1° ON ALL SURFACES.
 - TERMINALS MUST WITHSTAND A MINIMUM PUSHOUT FORCE OF 67 NEWTONS.
 - WHEN USING THIS INFORMATION FOR A NEW DESIGN, REQUEST THE LATEST COPY OF THIS PRINT FROM PACKARD ELECTRIC DIVISION.

RECOMMENDED MATERIAL:
 GLASS REINFORCED NYLON OR POLYESTER.

MATING CONNECTOR INFORMATION



- NOTES**
- UNLESS OTHERWISE SPECIFIED AND/OR INDICATED: DIMENSIONS ARE TO FACE OF VIEW SHOWN AND AUTOMATICALLY ROUNDED BY COMPUTER FOR INSPECTION (SEE MATH MODEL FOR PRECISE DIMENSIONS). FOR ALL OTHER DIMENSIONS NOT SHOWN BUT REQUIRED FOR TOOL BUILD, SEE MATH MODEL FOR PRECISE TOOL PATH DATA.
 - REFERENCE MATING COMPONENTS OR EQUIVALENT: TERMINAL 12124075 THROTTLE BODY INJECTOR
 - WHEN PARTS ARE SHIPPED, THEY MUST BE PACKED IN PLASTIC BAGS OR SHIPPING CONTAINERS MUST BE LINED WITH PLASTIC LINERS. BAGS OR LINERS MUST BE SEALED TO AVOID ENTRY OF FOREIGN MATTER.
 - USE 10 ML PER 1,000 SEALS OF 5-60-T LUBEWELL AT 10:1 CONCENTRATION FOR ASSEMBLY OF CABLE SEALS ONLY.
 - FOR LEAD LENGTH CALCULATIONS, DISTANCE FROM MATING END OF CONNECTOR TO FRONT OF CABLE CORE IS 10.15/7.05.

VIEW SCALE DOES NOT REFLECT ACTUAL PART SIZE



REV	NO	REV N/P	STATUS	CONN	CONN SEAL	CABLE SEAL & COLOR
1	15496460	01		12162207	12092590	12092579 - RUST ORANGE
4	12162218	A		12162214	12055812	12084429 - YELLOW
4	12162217	A		12162214	12052886	12084421 - GRAY
4	12162216	A		12162214	12065799	12065799 - LT GRAY
4	12162215	A		12162214	12052888	12052889 - BROWN
4	12162208	A		12162207	12052888	12052889 - BROWN
4	12162205	A		12162205	12052888	12052889 - BROWN
4	12162204	A		12162203	12092590	12092579 - RUST ORANGE

NOTES PART NO REV N/P STATUS CONN CONN SEAL CABLE SEAL & COLOR

DWG TYPE		PART DRAWING	
DATE	REV	DATE	REV
03JAN80	R 01		
SCALE		SCALE	
1:1		1:1	
SHEET NO		SHEET NO	
1 OF 1		1 OF 1	
REV		REV	
R 01		R 01	

DELPHI
 DELPHI PACKARD ELECTRIC SYSTEMS
 WARREN, MI

DATE: _____
 OR: _____
 APPROV: J. COLLINS
 APPROV: J. COLLINS
 APPROV: S.J. VUKMER
 APPROV: _____

THIS DOCUMENT IS UNCLASSIFIED AND IS IN THE PUBLIC DOMAIN EXCEPT WHERE SHOWN OTHERWISE. IT IS THE PROPERTY OF PACKARD ELECTRIC SYSTEMS AND IS LOANED TO YOU BY DELPHI. IT IS TO BE RETURNED TO DELPHI WHEN REQUESTED.

SUBSTITUTES OF CONSENSUS AND RETROFITTED CONTENT PER DELPHI 1040601

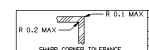
MATERIAL: SEE DRAWING

DRAWING NAME: AMS CONN 2F M/P 150.2 P25

DRAWING NUMBER: 12162267

SIZE: A0 SCALE: 1:1 SHEET NO: 1 OF 1

DRY TYPE	PRODUCTION	USE MATH DATA



DRY TYPE	PRODUCTION	USE MATH DATA