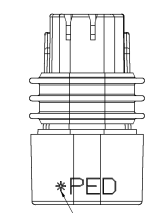
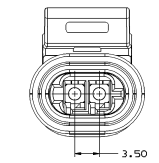
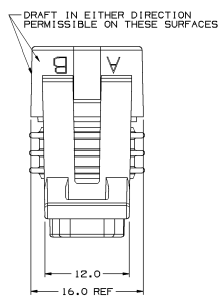


MATERIAL SPECIFICATIONS

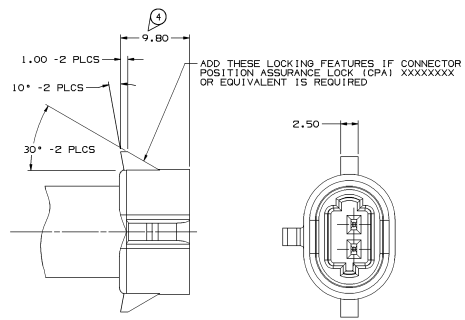
RECOMMENDED
 BASE METAL - CDA-210, EXTRA SPRING TEMPER
 PLATING - 0.0050±0.0025 MM THICK TIN

MINIMUMS
 ELECTRICAL CONDUCTIVITY - ≥ 20% IACS AT 20°C. USE OF A MATERIAL WITH CONDUCTIVITY < 20% IACS MUST BE APPROVED BY PACKARD ELECTRIC MATERIALS ENGINEERING.
 TENSILE STRENGTH - 407 MPa
 BLATING - FOR LOW ENERGY (±5%) AND NON-PASSENGER COMPARTMENT POWER CIRCUITS, 0.0050±0.0025 MM THICK TIN, FOR MATERIALS CONTAINING 10% OR MORE ZINC, AN UNDERPLATE OF COPPER 0.0050±0.0025 MM THICK IS REQUIRED.
 BLADE THICKNESS UNPLATED = 0.81±0.025
 TIN PLATE = 0.82±0.030

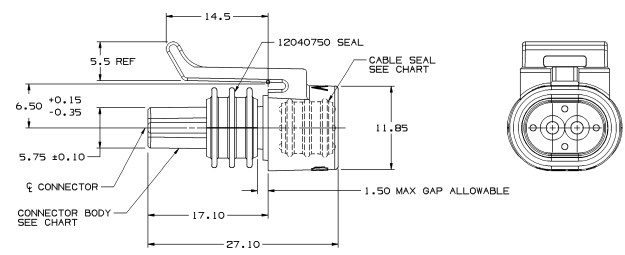
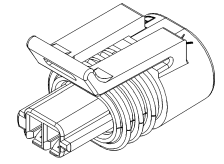
MATING BLADE INFORMATION
 SCALE B:1



ASTERISK (*) INDICATES 150:2 TERMINAL CAVITIES



OPTIONAL CONSTRUCTION

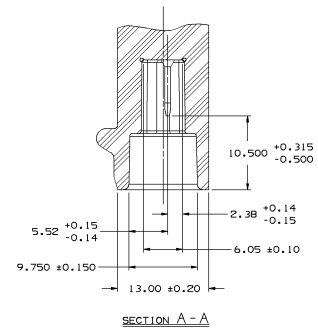


15326143	AI	15326141	BLACK	12040750	BLUE	12040751	GREEN
12162199	AI	12162196	MD GRAY	12040750	BLUE	12110169	LT GRN
12162198	AI	12162196	MD GRAY	12040750	BLUE	12078083	TAN
12162197	AI	12162196	MD GRAY	12040750	BLUE	12040751	GREEN
ASM	REV	PART NO	COLOR	PART NO	COLOR	PART NO	COLOR
PART NO		CONNECTOR		CONNECTOR SEAL		CABLE SEAL	

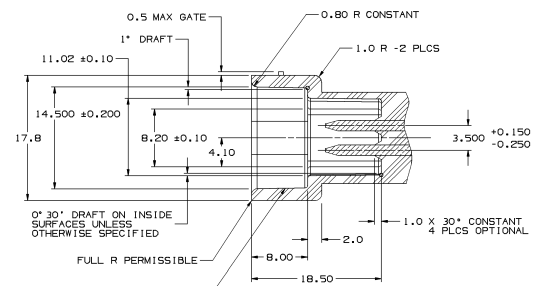
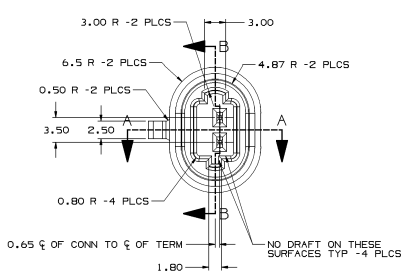
SNOWCONE CHARACTERISTICS

O	DENOTES DIMENSIONS AND CHARACTERISTICS THAT ARE IMPORTANT TO THE FUNCTION AND/OR PROCESSING OF THE PART THAT HAVE SPECIAL ACCEPTANCE CRITERIA FOR PRODUCTION APPROVAL.	TOTAL ON DRAWING	4
		LAST NO. USED	4

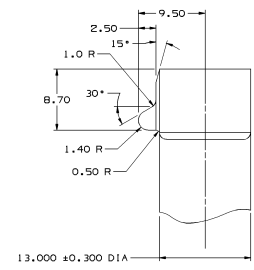
DATE	BY	REVISION RECORD	AUTH	OR	QT
02AP97		ALL PARTS - REVISED			
02AP97		1 - NO REV UPDATE REQ'D			178177.449PV
02AP97		15326143 - RELEASED TO			970005.449PV
03JA16		ALL PARTS - ADDED			
		LUBEWELL LUBRICANT NOTE			K24986.449PV



SECTION A-A



SECTION B-B



MATING CONNECTOR INFORMATION

- NOTES:**
- UNLESS OTHERWISE SPECIFIED AND/OR INDICATED: DIMENSIONS ARE TO FACE OF VIEW SHOWN AND AUTOMATICALLY ROUNDED BY COMPUTER FOR INSPECTION. (SEE MATH MODEL FOR PRECISE DIMENSIONS) FOR ALL OTHER DIMENSIONS NOT SHOWN BUT REQUIRED FOR TOOL BUILD, SEE MATH MODEL FOR PRECISE TOOL PATH DATA. CAVITIES ARE IDENTICAL.
 - MATING COMPONENTS: CONNECTOR 12041409 OR EQUIVALENT TERMINAL 12124075 OR EQUIVALENT
 - WHEN PARTS ARE SHIPPED, THEY MUST BE PACKED IN PLASTIC BAGS OR SHIPPING CONTAINERS MUST BE LINED WITH PLASTIC LINERS BAGS OR LINERS MUST BE SEALED TO AVOID ENTRY OF FOREIGN MATTER
 - FOR LEAD LENGTH CALCULATIONS, DISTANCE FROM MATING END OF CONNECTOR TO FRONT OF CABLE CORE IS 8.60 ± 1.55
 - SEALING CODE 3
 DESIGN WILL PASS SALT FOG AND IMMERSION TEST AFTER CONDITIONING AS SPECIFIED IN ESA-644 (WEATHER-PACK) ESA-710 (METRI-PACK) ESA-650 (UNDERWOOD MICRO-PACK) C-9006 (WORLD CONNECTOR) ETC. - WHEN MATED TO MATING PART OR EQUIVALENT
 - DIMENSIONS MARKED "REF" ARE FOR REFERENCE ONLY AND NO TOLERANCE LIMITS ARE ESTABLISHED
 - S-60-T LUBEWELL LUBRICANT CAN BE USED AS AN AUXILIARY SUPPORT ON THE CABLE INSTALLATION PROCESS.

PART NO 1216 2265

PART NO 1216 2265

DELPHI PACKARD ELECTRIC SYSTEMS
 10000 DELPHI WAY
 TROY, MI 48068-3000

REVISED: 02/05/97

OTHER DRAWINGS AVAILABLE

Ultracaps II

METRIC
 DIMENSIONS IN INCHES
 DIMENSIONS IN MILLIMETERS

THIRD ANGLE PROJECTION

CODE NO 6900 DC -C-5110

DESCRIPTION 07FE54

SCALE 4:1

REFERENCE NO 411

DESIGNED BY E. BELSTEIN OFFEN

DRAWN BY S.J. VUMMER ISEPKA

DATE 07/94

SEE DRAWING

TAXI ASM CONN 2F M/P 150:2 P25

PART NUMBER 1216 2265

SIZE A0