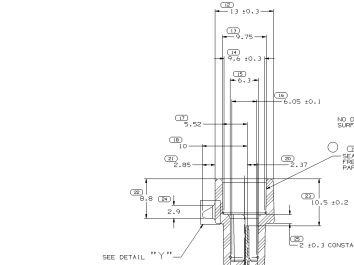
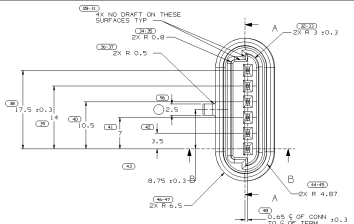
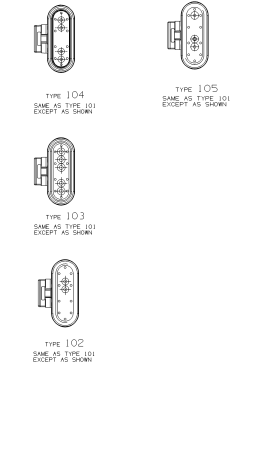


MATERIAL SPECIFICATIONS

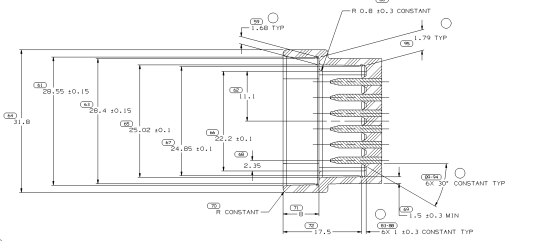
RECOMMENDED
BASE METAL - CDA-210, GILDING, EXTRA SPRING TEMPER
PLATING - 0.0050-0.0025 MM THICK TIN

MINIMUMS
ELECTRICAL CONDUCTIVITY - ≥ 20% IACS AT 20°C. USE OF A SURFACE WITH CONDUCTIVITY < 20% IACS MUST BE APPROVED BY PACKARD ELECTRIC MATERIALS ENGINEERING.
TENSILE STRENGTH - 407 MPa
ELONGATION - 10% MIN. (FOR LOW ENERGY (45%) AND NON-PASSENER COMPONENT NUMBER THROUGH CHECK) 100% MIN. (FOR THICK TEN). FOR MATERIALS CONTAINING 10% OR MORE TIN, AN ANNEAL OF COPPER SUCCESSES 100% THICK IS REQUIRED.

MATING BLADE INFORMATION
SCALE B11

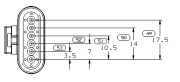
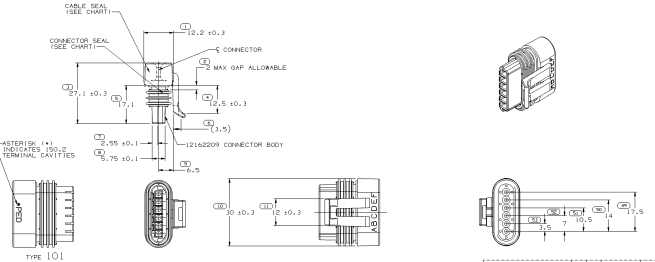


MATING CONNECTOR INFORMATION
SCALE A11
RECOMMENDED MATERIAL: GLASS REINFORCED NYLON OR POLYESTER



OPTIONAL CONSTRUCTION

- NOTES**
- UNLESS OTHERWISE SPECIFIED AND/OR INDICATED, DIMENSIONS ARE TO FACE OF ITEM UNLESS NOT AUTOMATICALLY ROUNDED BY COMPUTER FOR INSPECTION. USE MATH MODEL FOR PRECISE DIMENSIONS. FOR ALL DIMENSIONS NOT SHOWN BUT REQUIRED FOR TOOL BUILD, USE MATH MODEL FOR PRECISE TOOL PATH DATA. TYPICAL DRAFT ON ALL OUTSIDE SURFACES.
 - WHEN LISTING THIS INFORMATION FOR A NEW DESIGN, REQUEST THE LATEST COPY OF THIS PRINT FROM DELPHI PACKARD ELECTRIC.



- NOTES**
- UNLESS OTHERWISE SPECIFIED AND/OR INDICATED, DIMENSIONS ARE TO FACE OF ITEM UNLESS NOT AUTOMATICALLY ROUNDED BY COMPUTER FOR INSPECTION. USE MATH MODEL FOR PRECISE DIMENSIONS. FOR ALL DIMENSIONS NOT SHOWN BUT REQUIRED FOR TOOL BUILD, USE MATH MODEL FOR PRECISE TOOL PATH DATA.
 - CAVITIES TO ACCEPT 0.210MM TERMINAL OR EQUIVALENT.
 - WHEN PARTS ARE SHIPPED THEY MUST BE PACKED IN PLASTIC BAGS OR SHIPPING CONTAINERS MUST BE LINED WITH PLASTIC LINERS. BAGS MUST BE SEALED TO PREVENT FOREIGN MATTER.
 - FOR LEAD LENGTH CALCULATIONS, DISTANCE FROM MATING END OF CONNECTOR TO POINT OF CABLE GORE IS 10.15 ±0.1.
 - SEAL IN 3.
 - FOR PART NUMBERS WITH ADHESIVE, USE PMS0100 OR ADHESIVE APPROVED BY MATERIALS ENGINEERING TO GLUE CONNECTOR SEAL TO CONNECTOR.

PART NO WITH ADHESIVE	REV	DATE	STATUS	PART NO WITHOUT ADHESIVE	REV	DATE	STATUS	TYPE	# OF AVAL CAVITIES	CAVITIES BLOCKED	CONNECTOR SEAL	CABLE SEAL PART NO. & COLOR
12162264	01	11/14	106	12162264	01	11/14	106	A, B, C	3	NONE	12092266	12092266 - BK, REC
12162264	01	11/14	106	12162264	01	11/14	106	A, B, C	4	NONE	12092266	12162267 - PURPLE
12162264	01	11/14	106	12162264	01	11/14	106	NONE	5	NONE	12092266	12162268 - LT, GRAY
12162264	01	11/14	106	12162264	01	11/14	106	A, B, C, D	6	NONE	12092266	12162269 - BK, GRAY
12162264	01	11/14	106	12162264	01	11/14	106	NONE	6	NONE	12092266	12084110 - TAN
12162264	01	11/14	106	12162264	01	11/14	106	NONE	6	NONE	12092266	12092267 - GREEN

SYMBOL	DEFINITION	FORM NO	ISSUE NO	DATE	REVISION HISTORY	APP	CHK	DATE
12162264	12162264	12162264	01	11/14	106			

DELPHI
BLAKE POWER ELECTRIC SYSTEM

DATE: 11/14/14
PART: 12162264

REV: 01

12162264