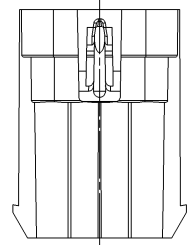
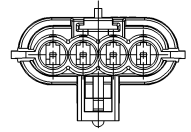
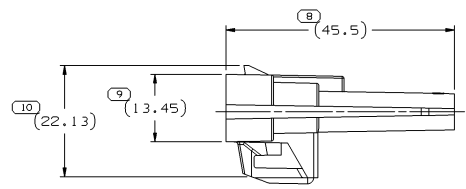
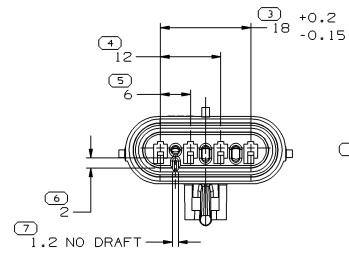
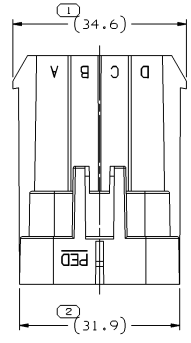


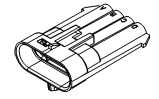
| SYMBOL DEFINITION | | MISSING NUMBERS | |
|---|---------------------------------|-----------------|--|
| A DIMENSION WITHOUT AN INSPECTION REPORT SYMBOL \square DOES NOT REQUIRE INSPECTION. IT MAY BE CONTROLLED ON AN INDIVIDUAL COMPONENT DRAWING. | TOTAL NO. OF SYMBOLS ON DRAWING | 10 | |
| | LAST NO. USED | 10 | |

| DWG STATUS | | | | ZONE | REVISION HISTORY | AUTH | DR | APVD1 | APVD2 |
|------------|-----|-----|-----|------|--|--------|-----|-------|-------|
| DATE | STG | REV | N/P | | | | | | |
| 30AU01 | R | 01 | - | - | ALL PARTS - CLEARED REV COLUMN & REVISED LOCK CONSTRUCTION | 210736 | EOV | EOV | GMC |
| 150C02 | R | 02 | - | - | 15450276 - RELEASED | 231864 | JHN | FRG | MBO |
| 100C05 | R | 03 | - | - | 12162102 - MAT'L SPEC WAS R0100172 | 273285 | JTZ | FRG | EST |



NOTES

- UNLESS OTHERWISE SPECIFIED AND/OR INDICATED: DIMENSIONS ARE TO FACE OF VIEW SHOWN AND AUTOMATICALLY ROUNDED BY COMPUTER FOR INSPECTION. (SEE MATH MODEL FOR PRECISE DIMENSIONS.) FOR ALL OTHER DIMENSIONS NOT SHOWN BUT REQUIRED FOR TOOL BUILD, SEE MATH MODEL FOR PRECISE TOOL PATH DATA.
- SEALING CODE 3 - DESIGN WILL PASS SALT FOG AND IMMERSION TEST AFTER CONDITIONING AS SPECIFIED IN ESA-644 (WEATHER-PACK), ESA-710 (METRI-PACK), ESA-650 (UNDERHOOD MICRO-PACK), C-4006 (WORLD CONNECTOR), ETC. - WHEN MATED TO MATING PART OR EQUIVALENT
- MATING COMPONENTS:
CONNECTOR AND SEAL ASSEMBLY 12059870
CABLE SEAL 12049086 OR EQUIVALENT
SEE DETAIL DRAWING FOR COMPATIBLE O.D. RANGE
TERMINAL 12045773 OR EQUIVALENT
SECONDARY TERMINAL LOCK 12047948
CONNECTOR POSITION ASSURANCE LOCK 12020833
- MATERIAL RECYCLING CODE >PBT< PER SAE J1344. (2.3)X(0.1) RAISED CHARACTERS AS SHOWN TO BE LOCATED ON ANY EXTERIOR SURFACE. OPTIONAL CONSTRUCTION TO BE NO MATERIAL RECYCLING CODE.
- (2.3)X(0.1) RAISED DELPHI CORPORATE BRAND TO BE LOCATED ON ANY EXTERIOR SURFACE, PREFERABLY VISIBLE AT FINAL ASSEMBLY. OPTIONAL CONSTRUCTION TO BE "PED" OR NO LOGO.



| PART NO | REV | N/P | STATUS | MATERIAL SPECIFICATION AND COLOR | VOLUME CM ³ |
|----------|-----|-----|--------|----------------------------------|------------------------|
| 15450276 | 01 | - | | M4698008 PBT GF30 HS-BLU | 5.649 |
| 12162102 | 03 | AA | | M4698030 PBT GF30 BLK | 5.649 |

| DIMENSIONAL RANGE (MM) | CHART | ET | | | | | | |
|--|-------|------|------|-------|-------|-------|-------|-------|
| FROM > 0 | > 20 | > 30 | > 70 | > 100 | > 150 | > 200 | > 250 | > 300 |
| TO | 20 | 30 | 70 | 100 | 150 | 200 | 250 | 300 |
| TOLERANCE UNLESS OTHERWISE SPECIFIED | | | | | | | | |
| ISO: F1, F2, F3, F4, F5, F6, F7, F8, F9, F10, F11, F12 | | | | | | | | |
| ANGULAR TOLERANCE: M, S, Y | | | | | | | | |

DWG TYPE: PART STANDARD

STITLE: TAXI CONN 4 M M/P 150 SLD

VOLUME (CM³): SEE CHART

DISTR CODE: D

UNLESS OTHERWISE SPECIFIED
THIS DOCUMENT IS IN ACCORDANCE WITH ASME Y14.5M-1994 AS AMENDED BY THE 0M GLOBAL DIMENSIONING AND TOLERANCING ADDENDUM - 1997. ALL DIMENSIONAL TOLERANCES AND RELATED DATUMS APPLY RFS. RULE #1 PERFECT FORM AT ALL TIMES DOES NOT APPLY WHEN RELATIONSHIP BETWEEN FEATURES IS ESTABLISHED BY ORIENTATION OR LOCATION TOLERANCES. SEPARATE POSITION CALCULATIONS MAY BE MADE SEPARATELY, REGARDLESS OF DATUM REFERENCE.
ALL DIMENSIONS ARE IN MILLIMETERS.

REFERENCE: 12052844

THIRD ANGLE PROJECTION

DO NOT SCALE

USE MATH DATA

DELPHI

DELPHI PACKARD ELECTRIC SYSTEMS
WARREN, OH

| DR | DATE |
|--------------------|--------|
| APVD1 T. BEILSTEIN | 250C93 |
| APVD2 T. BEILSTEIN | 250C93 |
| APVD3 K. MURPHY | 05N093 |
| APVD4 | |
| APVD5 | |

SUBSTANCES OF CONCERN AND RECYCLED CONTENT PER DELPHI 10949001

MATERIAL: SEE CHART

DRAWING NAME: TAXI CONN 4 M M/P 150 SLD

DRAWING NUMBER: 12162103

SIZE: A1 SCALE: 2:1 FRAME NO: 1 OF 1 SHEET NO: 2 OF 2 STG: R 03 REV: N/P