

● THESE DIMENSIONS ARE CRITICAL TO THE MECHANICAL AND ELECTRICAL PERFORMANCE OF THE CONNECTION SYSTEM.

MATERIAL SPECIFICATIONS

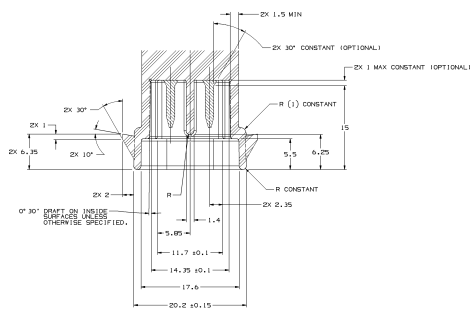
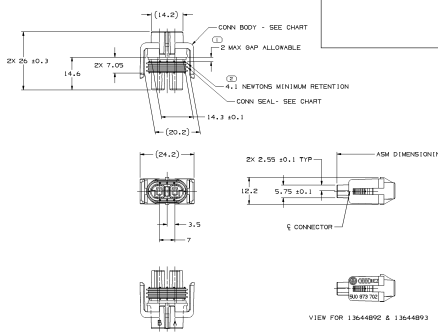
RECOMMENDED

- BASE METAL - COP-210, EXTRA SPRING TEMPER
- TIN PLATING (WHERE APPLICABLE TO 10% MAX CONTINUOUS USAGE) QUANTITIES MAY EXCEED 100 μIN ELECTROPLATED TIN.
- USAGE OF PLATING TYPES OTHER THAN RECOMMENDED MUST BE APPROVED BY DELPHI PACKARD ELECTRIC SYSTEMS ENGINEERING.

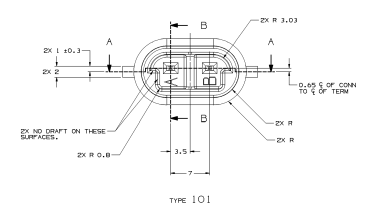
MINIMUMS

- ELECTRICAL CONDUCTIVITY - 100% IACS AT 20 °C. USE OF A MATERIAL WITH CONDUCTIVITY 10% LOWER MUST BE APPROVED BY PACKARD ELECTRIC MATERIALS ENGINEERING.
- TENSILE STRENGTH - 430 - 480 MPa
- UNDERPLATING FOR TIN PLATING - FOR BASE MATERIALS CONTAINING 10% OR MORE ZINC, AN UNDERPLATE OF COPPER COATED AN 100 μIN MINIMUM THICK IS REQUIRED.
- PROCESSING LUBRICANT - ANY PROCESSING LUBRICANT REMAINING ON TERMINALS MUST BE WIPED OFF BEFORE THE ELECTRICAL PERFORMANCE OF THE CONNECTION UP TO A MAXIMUM TEMPERATURE OF 107 °C. PROCESSING LUBRICANTS MUST BE APPROVED BY DELPHI PACKARD ELECTRIC SYSTEMS ENGINEERING.

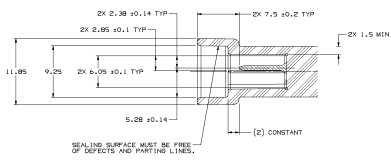
MATING BLADE INFORMATION



SECTION A-A



TYPE 101



SECTION B-B

MATING CONNECTOR INFORMATION
SCALE 5:1
INSPECTION SYMBOLS SHOWN IN THESE VIEWS ARE FOR REFERENCE ONLY.

- NOTES**
- UNLESS OTHERWISE SPECIFIED AND/OR INDICATED, DIMENSIONS ARE TO FACE OF VIEW SHOWN AND AUTOMATICALLY ROUNDED BY COMPUTER FOR INSPECTION USE WITH MODEL FOR PRECISE TOOL PATH DATA. SEE MATN MODEL FOR PRECISE TOOL PATH DATA.
 - WHEN USING THIS INFORMATION FOR A NEW DESIGN, PRESENT THE LATEST COPY OF THIS DRAWING FROM PACKARD ELECTRIC.
 - RECOMMENDED MATERIAL: GLASS REINFORCED NYLON OR POLYESTER.

- NOTES**
- UNLESS OTHERWISE SPECIFIED AND/OR INDICATED, DIMENSIONS ARE TO FACE OF VIEW SHOWN AND AUTOMATICALLY ROUNDED BY COMPUTER FOR INSPECTION USE WITH MODEL FOR PRECISE TOOL PATH DATA. SEE MATN MODEL FOR PRECISE TOOL PATH DATA.
 - THIS PRODUCT IS NOT CATEGORIZED AS AN APPEARANCE ITEM, WHICH MEANS THAT THE COLOR AND FINISH ARE NOT PART OF THE FIT, FORM, OR FUNCTION OF THE PART AND PERMISSIBLE FOR DRAFT 4.7-CB-01.
 - MAX CABLE O.D. MUST BE LESS THAN 2.43.
 - INSULATING PARTS ARE SHOWN. THEY MUST BE PACKED IN PLASTIC BAGS OR OTHERS MUST BE SEALED TO AVOID EXPOSURE TO FOREIGN MATTER.
 - THIS ASM - DOES NOT HAVE A CPA FEATURE.
 - FOR APPLICATION DATA SEE THE INDIVIDUAL APPLICATION DRAWINGS.
 - FOR PART NUMBER WITH ADHESIVE, USE MSP10001 OR ADHESIVE APPROVED BY MATERIALS ENGINEERING TO SEAL CONNECTOR SEAL TO CONNECTOR.



REV	DATE	DESCRIPTION	BY	CHK	APP
1364492	01 16 01	RELEASED BY COLMAN AND REPAIR TO PG	SPENCER	ANDREAS	JL
1364493	01 16 01	ALL PARTS - TEST AND INSPECTION CORRECTED TO	SPENCER	ANDREAS	JL
1364494	01 16 01	REMOVED DIMENSION	SPENCER	ANDREAS	JL
1364495	01 16 01	ALL PARTS - REWORK SAMPLES, UPDATED MATN MODEL	ANDREAS	JL	SP
1364496	01 16 01	RELEASED BY COLMAN AND REPAIR TO PG	ANDREAS	JL	SP
1364497	01 16 01	RELEASED BY COLMAN AND REPAIR TO PG	ANDREAS	JL	SP
1364498	01 16 01	RELEASED BY COLMAN AND REPAIR TO PG	ANDREAS	JL	SP
1364499	01 16 01	RELEASED BY COLMAN AND REPAIR TO PG	ANDREAS	JL	SP
1364500	01 16 01	RELEASED BY COLMAN AND REPAIR TO PG	ANDREAS	JL	SP

12162019
PART NO WITH ADHESIVE REV/N/P STATUS

REV	DATE	DESCRIPTION	BY	CHK	APP
1364492	01 16 01	RELEASED BY COLMAN AND REPAIR TO PG	SPENCER	ANDREAS	JL
1364493	01 16 01	ALL PARTS - TEST AND INSPECTION CORRECTED TO	SPENCER	ANDREAS	JL
1364494	01 16 01	REMOVED DIMENSION	SPENCER	ANDREAS	JL
1364495	01 16 01	ALL PARTS - REWORK SAMPLES, UPDATED MATN MODEL	ANDREAS	JL	SP
1364496	01 16 01	RELEASED BY COLMAN AND REPAIR TO PG	ANDREAS	JL	SP
1364497	01 16 01	RELEASED BY COLMAN AND REPAIR TO PG	ANDREAS	JL	SP
1364498	01 16 01	RELEASED BY COLMAN AND REPAIR TO PG	ANDREAS	JL	SP
1364499	01 16 01	RELEASED BY COLMAN AND REPAIR TO PG	ANDREAS	JL	SP
1364500	01 16 01	RELEASED BY COLMAN AND REPAIR TO PG	ANDREAS	JL	SP

DELPHI
QUALITY THROUGH EXCELLENCE

DATE: 01/16/01
PART: 12162019
REV: 01

12162019

P105101