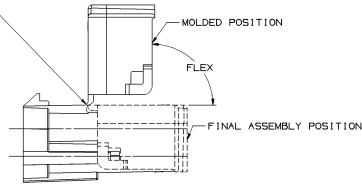
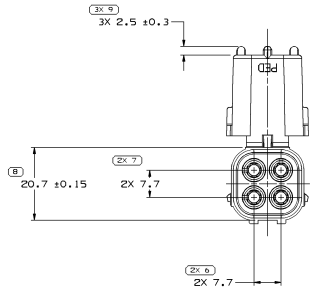
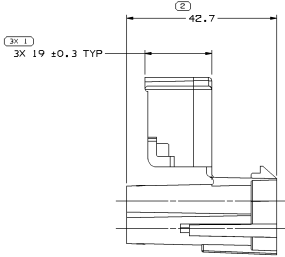
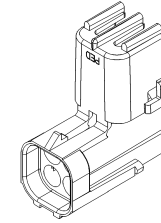


CABLE END VIEW OF CONNECTOR BODY

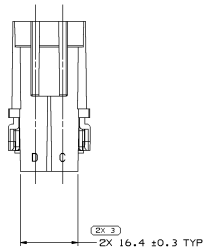
FLEX AREA MAY EXHIBIT MATERIAL SEPARATION AFTER FINAL ASSEMBLY



SECONDARY TERMINAL LOCK ASSEMBLY REQUIREMENT



INDEX CODE  
+1.04  
(ALSO SEE HANDBOOK)

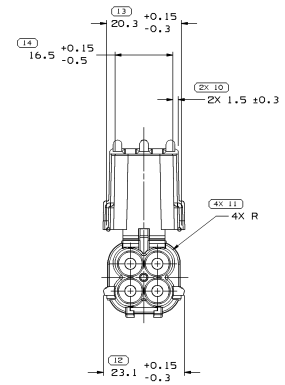


NOTES

- UNLESS OTHERWISE SPECIFIED AND/OR INDICATED: DIMENSIONS ARE TO FACE OF VIEW SHOWN AND AUTOMATICALLY ROUNDED BY COMPUTER FOR INSPECTION. (SEE MATH MODEL FOR PRECISE DIMENSIONS.) FOR ALL OTHER DIMENSIONS NOT SHOWN BUT REQUIRED FOR TOOL BUILD, SEE MATH MODEL FOR PRECISE TOOL PATH DATA.
- SEALING CODE 3.
- THIS PART IS NOT CONTROLLED FOR AUTOMATIC FEEDING.
- CAUTION: DO NOT ATTEMPT TO COPY THIS DRAWING WHEN DESIGNING A MATING PART TO A WEATHER PACK CONNECTOR. PLEASE REQUEST THE LATEST COPY OF DRAWING NUMBER 120200B4 FROM THE PACKARD ELECTRIC DIVISION.
- MATERIAL RECYCLING CODE PER ISO 11469. (2,3)X(0,1) CHARACTERS AS SHOWN TO BE LOCATED ON ANY EXTERIOR SURFACE. OPTIONAL CONSTRUCTION TO BE NO MATERIAL RECYCLING CODE.
- (2,3)X(0,1) DELPHI CORPORATE BRAND TO BE LOCATED ON ANY EXTERIOR SURFACE, PREFERABLY VISIBLE AT FINAL ASSEMBLY. OPTIONAL CONSTRUCTION FOR EXISTING TOOLING MAY BE "PED" OR NO LOGO.
- FOR APPLICATION DATA SEE THE INDIVIDUAL APPLICATION DRAWINGS.
- THIS PRODUCT IS NOT CATEGORIZED AS AN APPEARANCE ITEM, MINOR IMPERFECTIONS INCLUDING, BUT NOT LIMITED TO, FLOW MARKS, COLOR BUMPHES, GATE VESTIGES, AND SORT FLASH THAT DO NOT AFFECT THE FIT, FORM, OR FUNCTION OF THE PART ARE PERMISSIBLE PER DNP-4.7-CS-01.

SYMBOL DEFINITION		MISSING SYMBOLS	
A DIMENSION WITHOUT AN INSPECTION REPORT SYMBOL (—) DOES NOT REQUIRE INSPECTION. IT MAY BE CONTROLLED ON THE INDIVIDUAL COMPONENT DRAWING.	TOTAL NO OF INSPECTIONS REQUIRED	NO MISSING SYMBOL NUMBER	
	25		
	LAST NO. USED		
	14		

DWG STATUS				REVISION HISTORY		AUTH	DR	APP'D	PO
DATE	ISO	REV	DESCRIPTION	DATE					
030699	R	01	-	-	CLEARED REV COLUMN AND ALL PARTS - TAXI PD CREATED.	227356	LMA	JW	EH
14JL98	R	02	-	-	12015024 - UPDATED MAT'L CALLOUT.	405393	JAN	DMC	MEC
08A009	R	03	-	-	ALL ACTIVE PARTS DIM 23.1 +0.15/-0.3 WAS 23.1 +/-0.15 DIM 20.3 +0.15/-0.3 WAS 20.3 +/-0.15 AND DIM 16.3 +0.15/-0.5 WAS 16.5 +/-0.15	408611	APP	DMC	APR
22JN11	R	04	-	-	12015024 - ADDED NONE APPEARANCE ITEM NOTE	414668	JRL	JRL	GR



PART NO	REV N/P	STATUS	MATERIAL SPECIFICATION AND COLOR	APPLICATION	VOLUME (CM <sup>3</sup> )
12160904	A	-	POLYAMIDE COMPOUND GRAY MD	IN LINE	8.332
12015024	E6	-	POLYAMIDE COMPOUND BLACK	IN LINE	8.332

PART DRAWING	
DATE	030699
DR	L. MACIAS
APP'D	J. VILLAMIL
PO	J. VILLAMIL
UNLESS OTHERWISE SPECIFIED	
THIS DRAWING IS IN CONFORMANCE WITH THE 1:1 SCALE UNLESS OTHERWISE SPECIFIED. DIMENSIONS ARE TO FACE UNLESS OTHERWISE SPECIFIED. DIMENSIONS IN PARENTHESES ARE PERMISSIBLE PER DNP-4.7-CS-01.	
ALL DIMENSIONS ARE IN MILLIMETERS	
PROCESS SENSITIVE DIMENSION	
THIRD ANGLE PROJECTION	
DO NOT SCALE	
USE MATH DATA	

DELPHI	
DELPHI PACKARD ELECTRICAL/ELECTRONIC ARCHITECTURE WARREN, OH	
DATE	030699
DR	L. MACIAS
APP'D	J. VILLAMIL
PO	J. VILLAMIL
UNLESS OTHERWISE SPECIFIED	
THIS DRAWING IS IN CONFORMANCE WITH THE 1:1 SCALE UNLESS OTHERWISE SPECIFIED. DIMENSIONS ARE TO FACE UNLESS OTHERWISE SPECIFIED. DIMENSIONS IN PARENTHESES ARE PERMISSIBLE PER DNP-4.7-CS-01.	
ALL DIMENSIONS ARE IN MILLIMETERS	
THIRD ANGLE PROJECTION	
DO NOT SCALE	
USE MATH DATA	
DRAWING NAME TAXI CONN M W/P SHD SLD	
DRAWING NUMBER 12160905	
DATE	030699
DR	L. MACIAS
APP'D	J. VILLAMIL
PO	J. VILLAMIL