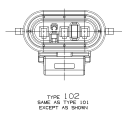
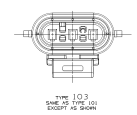




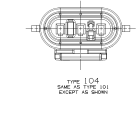
DETAIL Y
SCALE #11
SAME AS TYPE 103
EXCEPT AS SHOWN
ON THIS



TYPE 102
SAME AS TYPE 101
EXCEPT AS SHOWN



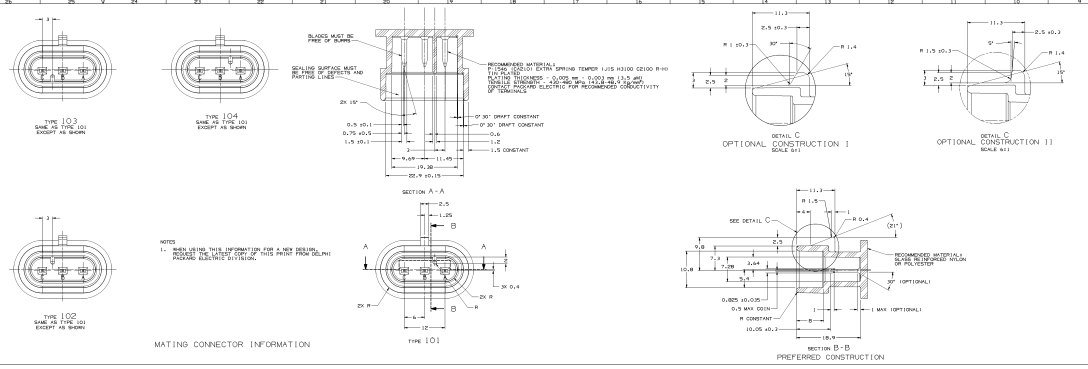
TYPE 103
SAME AS TYPE 101
EXCEPT AS SHOWN



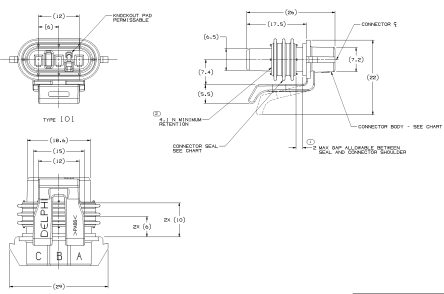
TYPE 104
SAME AS TYPE 101
EXCEPT AS SHOWN



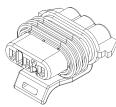
TYPE 105
SAME AS TYPE 102
EXCEPT AS SHOWN



MATING CONNECTOR INFORMATION



SYMBOL DEFINITION		SYMBOL	DEFINITION
1	RECOMMENDED MINIMUM MATE TO THIS CONNECTOR	1	RECOMMENDED MINIMUM MATE TO THIS CONNECTOR
2	OPTIONAL MATE TO THIS CONNECTOR	2	OPTIONAL MATE TO THIS CONNECTOR



- NOTES
- UNLESS OTHERWISE SPECIFIED AND/OR INDICATED, DIMENSIONS ARE TO FACE UNLESS OTHERWISE SPECIFIED. DIMENSIONS ARE TO FACE UNLESS OTHERWISE SPECIFIED. DIMENSIONS ARE TO FACE UNLESS OTHERWISE SPECIFIED.
 - SEAL POINTS ARE SHOWN ONLY AS A REFERENCE TO THE SEAL POINTS OF THESE WATERSHEDS. SEAL POINTS ARE NOT TO BE USED AS A BASIS FOR DIMENSIONING.
 - CONNECTION IS TO BE MADE TO THE CONTACT POINTS OF THESE WATERSHEDS. SEAL POINTS ARE NOT TO BE USED AS A BASIS FOR DIMENSIONING.
 - THIS DRAWING IS NOT TO BE USED AS A BASIS FOR DIMENSIONING. DIMENSIONS ARE TO FACE UNLESS OTHERWISE SPECIFIED.
 - FOR FURTHER INFORMATION ON DIMENSIONS OF DIMENSIONS, REFER TO THE DIMENSIONING DRAWING TO THE CONTACT SEAL.
 - FOR APPLICATION DATA, SEE THE INDIVIDUAL APPLICATION DRAWINGS.

12129958

REV	DATE	BY	CHKD	DESCRIPTION
1				
2				
3				
4				
5				
6				
7				
8				
9				
10				
11				
12				
13				
14				
15				
16				
17				
18				
19				
20				
21				
22				
23				
24				
25				
26				
27				
28				
29				
30				
31				
32				
33				
34				
35				
36				
37				
38				
39				
40				
41				
42				
43				
44				
45				
46				
47				
48				
49				
50				

DELPHI
 12129958
 12129958
 12129958