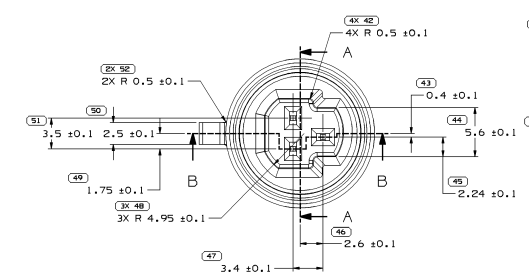
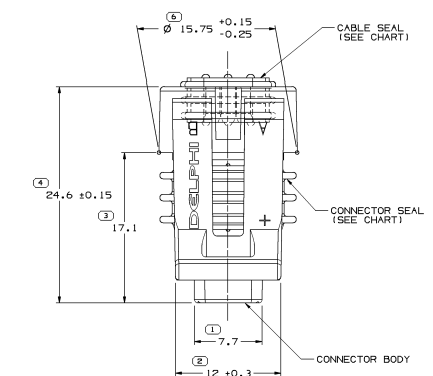


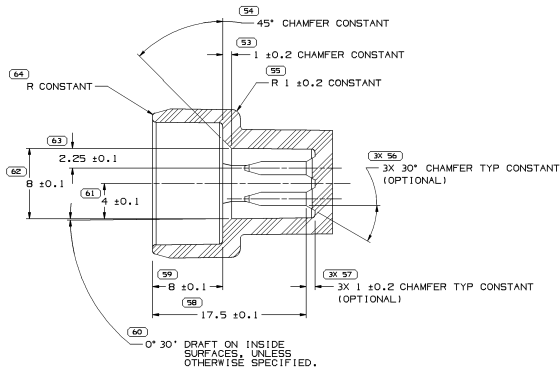
MATING TERMINAL INFORMATION
SCALE 10:1

RECOMMENDED MATERIAL:
P-1546 (CA210) EXTRA SPRING
TEMPER-TIN PLATED BRASS
PLATING THICKNESS: 0.005-0.003 MM
TENSILE STRENGTH: 480-430 MPa

INSPECTION SYMBOLS SHOWN IN THESE
VIEWS ARE FOR REFERENCE ONLY



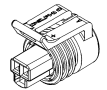
SECTION A-A



MATING CONNECTOR INFORMATION

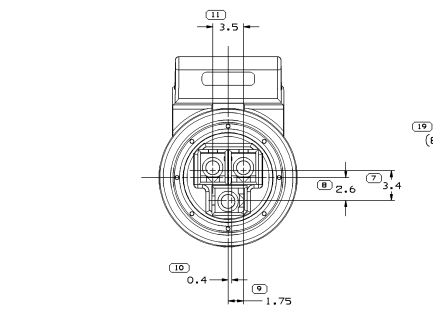
RECOMMENDED MATERIAL: GLASS-FILLED POLYESTER
M-2192-001-NATURAL

INSPECTION SYMBOLS SHOWN IN THESE
VIEWS ARE FOR REFERENCE ONLY

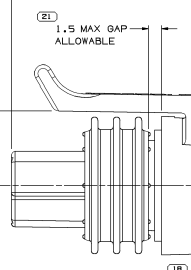


NOTES

- UNLESS OTHERWISE SPECIFIED AND/OR INDICATED, DIMENSIONS ARE TO FACE OF VIEW SHOWN AND AUTOMATICALLY ROUNDED BY COMPUTER FOR INSPECTION (SEE MATH MODEL FOR PRECISE DIMENSIONS). FOR ALL OTHER DIMENSIONS NOT SHOWN BUT REQUIRED FOR TOOL BUILD, SEE MATH MODEL FOR PRECISE TOOL PATH DATA.
- WHEN PARTS ARE SHIPPED THEY MUST BE PACKED IN PLASTIC BAGS OR SHIPPING CONTAINERS MUST BE LINED WITH PLASTIC LINERS. BAGS OR LINERS MUST BE SEALED TO AVOID ENTRY OF FOREIGN MATTER.
- SEALING CODE 3 - DESIGN WILL PASS SALT FOG AND IMMERSION TEST AFTER CONDITIONING AS SPECIFIED IN ESA-644 (WEATHER-PACK), ESA-510 (METRI-PACK), ESA-650 (UNDERHOOD MICRO-PACK), C-4006 (WORLD CONNECTOR), ETC WHEN MATED TO MATING PART OR EQUIVALENT.
- THIS PART ACCEPTS THE FOLLOWING COMPONENTS OR EQUIVALENT: CAVITIES TO ACCEPT 12047680 TERMINAL.
- FOR LEAD LENGTH CALCULATIONS, DISTANCE FROM MATING END OF CONNECTOR TO FRONT END OF CABLE CORE IS 10.15±7.05.
- FOR PART NUMBERS WITH ADHESIVE, USE M3510001 OR ADHESIVE APPROVED BY MATERIALS ENGINEERING TO GLUE CONNECTOR SEAL TO CONNECTOR.
- FOR APPLICATION DATA SEE THE INDIVIDUAL APPLICATION DRAWINGS.
- S-60-T LUBRELL LUBRICANT CAN BE USED AS AN AUXILIARY SUPPORT ON THE CABLE INSTALLATION PROCESS.



ASM DIMENSIONING POINT



CABLE SEAL MAY EXTEND 1
MAX (EXCLUDING ANTI-STICK
BUMPS) BEYOND CONNECTOR,
PRIOR TO FINAL LEAD ASM.

TYPE 102
SAME AS TYPE 101
EXCEPT AS SHOWN

TYPE 101

PART NO. WITH ADHESIVE	REV N/P	PART NO. WITHOUT ADHESIVE	REV N/P	TYPE	CONNECTOR	CONNECTOR SEAL	CABLE SEAL & COLOR
12186589	B3	19452173	01	AB	12065286	19439078	12065285 - RED
		12186587	A3	- 101	12065286	12186581	12110072 - TAN
		12162226	C3	- 101	12162225	12052893	12078089 - PURPLE
		1210192	B3	- 101	12065286	12052893	12110072 - TAN
		12078090	C3	- 101	12065286	12052893	12078089 - PURPLE
		12065287	B3	- 101	12065286	12052893	12065285 - RED

SYMBOL DEFINITION		MISSING SYMBOLS		REVISION HISTORY		AUTH		DR		APP	
A DIMENSION WITHOUT AN INSPECTION REPORT SYMBOL () DOES NOT REQUIRE INSPECTION. IT MAY BE CONTROLLED ON THE INDIVIDUAL COMPONENT DRAWING.	TOTAL NO OF INSPECTIONS REQUIRED	NO MISSING SYMBOL NUMBER	77	DATE	REV	DESCRIPTION	BY	DATE	BY	DATE	BY
LAST NO. USED	64			1106202	R 01	-	-	15492173 - RELEASED	4232301	ECB	JAW/DM
				060211	R 02	-	-	ALL PARTS - CREATED APPLICATION DATA	415663	CBM	DM
				033414	R 03	-	-	ALL PARTS - ADDED LUBRELL LUBRICANT NOTE	424997	JAW	JAW/DM

DELPHI
DELPHI CORPORATION
9614 W. MICHIGAN
WARREN, MI 48090-1346
TEL: 586-242-0100 FAX: 586-242-1474
WWW.DELPHI.COM

THIS DRAWING IS THE PROPERTY OF DELPHI CORPORATION. NO REPRODUCTION OR TRANSMISSION OF THIS DOCUMENT IS PERMITTED WITHOUT THE WRITTEN PERMISSION OF DELPHI CORPORATION. ALL DIMENSIONS ARE IN MILLIMETERS UNLESS OTHERWISE SPECIFIED.

DATE: PART DRAWING

BY	DATE
J. BEEVES	210887
T. MUDRY	051480
E. CANNATTI	051480

MATERIAL: CONTENT: PER DELPHI 12047680

DRAWING TITLE: TAXI ASM CONN F M/P 150 SSD

DRAWING NUMBER: 12078088

SCALE: 1:1

DATE: 11/11/01 OF 11