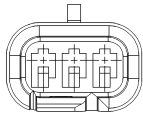
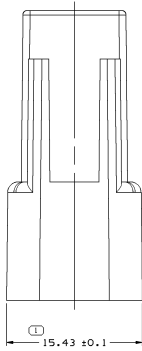
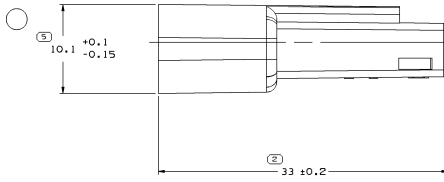
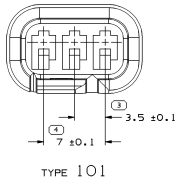


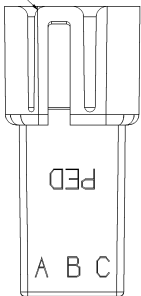
SYMBOL DEFINITION			MISSING SYMBOLS		DWG STATUS			REVISION HISTORY					
A DIMENSION WITHOUT AN INSPECTION REPORT SYMBOL (□) DOES NOT REQUIRE INSPECTION. IT MAY BE CONTROLLED ON THE INDIVIDUAL COMPONENT DRAWING.	TOTAL NO OF INSPECTIONS REQUIRED	7	NO MISSING SYMBOL NUMBER		DATE	ISO	REV	DATE	REV	AUTH	DR	APP	APP
	LAST NO. USED	6			21.01.00	R	01	-	-	ALL PARTS - REDRAWN TO PD	000059	06	04
					12SE00	R	02	-	-	ALL PARTS - ADDED OPTIONAL CONSTRUCTION & NOTES (2 PLS)	202650	04	04
					04AP06	R	03	-	-	2205423 - MAT'L SPEC N15 M3520202	278990	04	04
					04NO11	R	04	-	-	DIM 19.1 +0.1/-0.15 WAS 10.1 +/-0.1	416015	04	04



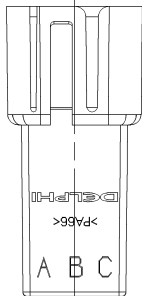
TYPE 102
SAME AS TYPE 101
EXCEPT AS SHOWN



(2X 3)
2X R 1.2 ± 0.2



OPTIONAL CONSTRUCTION



- NOTES
- UNLESS OTHERWISE SPECIFIED AND/OR INDICATED:
DIMENSIONS ARE TO FACE OF VIEW SHOWN AND AUTOMATICALLY ROUNDED BY COMPUTER FOR INSPECTION (SEE MATH MODEL FOR PRECISE DIMENSIONS). FOR ALL OTHER DIMENSIONS NOT SHOWN BUT REQUIRED FOR TOOL BUILD, SEE MATH MODEL FOR PRECISE TOOL PATH DATA.
 - THIS PART IS NOT CONTROLLED FOR AUTOMATIC FEEDING.
 - THIS CONNECTOR WILL PASS THRU A $\phi 17$ MIN HOLE.
 - MATERIAL RECYCLING CODE PER ISO 11469: (11X10.1) RAISED CHARACTERS AS SHOWN TO BE LOCATED ON ANY EXTERIOR SURFACE. OPTIONAL CONSTRUCTION TO BE NO MATERIAL RECYCLING CODE.
 - (11X10.1) DELPHI CORPORATE BRAND TO BE LOCATED ON ANY EXTERIOR SURFACE, PREFERABLY VISIBLE AT FINAL ASSEMBLY. OPTIONAL CONSTRUCTION FOR EXISTING TOOLING MAY BE "PED".
 - THIS PRODUCT IS NOT CATEGORIZED AS AN APPEARANCE ITEM. MINOR IMPERFECTIONS INCLUDING, BUT NOT LIMITED TO: FLOW MARKS, COLOR BLEMISHES, GATE VESTIGE, AND SOFT FLASH THAT DO NOT AFFECT THE FIT, FORM, OR FUNCTION OF THE PART ARE PERMISSIBLE PER DPNP-4.7-CS-01.
 - FOR APPLICATION DATA SEE THE INDIVIDUAL APPLICATION DRAWINGS.

PART NO	REV	N/P	STATUS	TYPE	MATERIAL SPECIFICATION AND COLOR	VOL. CM ³
12191581	A4	-	102		POLYAMIDE COMPOUND BLACK	1.676
12065423	D2	AA	101		POLYAMIDE COMPOUND CREAM	1.664
12047782	A4	-	101		POLYAMIDE COMPOUND BLACK	1.664

DESCRIPTION	UNIT	MIN	MAX	MIN	MAX	MIN	MAX
10.1	mm	9.9	10.3	9.9	10.3	9.9	10.3
33	mm	32.5	33.5	32.5	33.5	32.5	33.5

PART DRAWING	
DATE	DATE
DR	DR
APPROVED BY: G. ESTRADA	D1.IND
APPROVED BY: G. MACIAS	08.IND
APPROVED BY: G. INVARRO	09.IND
APPROVED BY:	
APPROVED BY:	
APPROVED BY:	
SUBSTANCES OF CONCERN AND RESTRICTED CONTENT PER DELPHI 12049201	
SEE CHART	
ALL DIMENSIONS ARE IN MILLIMETERS	
REFERENCE	THIRD ANGLE PROJECTION
DO NOT SCALE	DO NOT SCALE
USE MATH DATA	USE MATH DATA

DELPHI
DELPHI PACKAGED ELECTRICAL/ELECTRONIC ARCHITECTURE
WARREN, OH

TAXI CONN M M/P 150

12065181

REV: 5.1.1 OF 1.1 OF 1.1 R 04