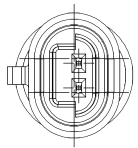
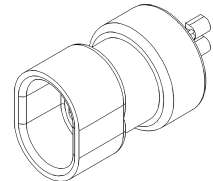
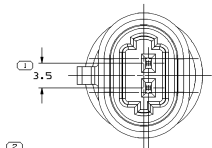


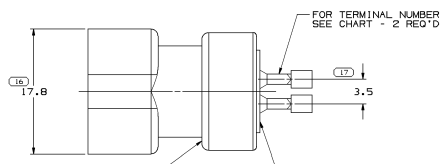
SYMBOL DEFINITION		MISSING NUMBERS		DWG STATUS		REVISION HISTORY		AUTH	DR	APP	APPD	
A	DIMENSION WITHOUT AN INSPECTION REPORT SYMBOL () DOES NOT REQUIRE INSPECTION. IT MAY BE CONTROLLED ON AN INDIVIDUAL COMPONENT DRAWING	TOTAL NO. OF SYMBOLS ON DRAWING	1B	DATE	1501 REC	1501 Q01	DATE					
				080196	R	001	-	-	ALL PARTS - CREATED PART DRAWING	186170	JAR	JAR
				150099	R	002	-	-	ALL PARTS - UPDATED PGM ATTRIBUTES	197441	JAR	JAR
				25J400	R	003	-	-	ALL PARTS - 10.510.315/0.5 WAS 10.590.3	198521	JPD	BKD
				080001	R	004	-	-	ALL PARTS - UPDATED MATING CONNECTOR INFORMATION	216217	LOA	GGI
				020610	R	05	-	-	ALL PARTS - ADDED SEALING NOTES AND UPDATED MAT'L CALLOUT	410145	FRE	FRE



TYPE 102
SAME AS TYPE 101
EXCEPT AS SHOWN

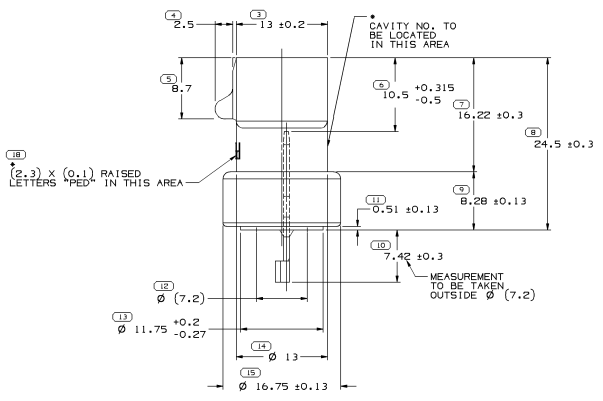
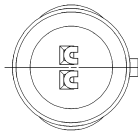


TYPE 101
0.65 C OF CONN TO C OF TERM



FOR TERMINAL NUMBER SEE CHART - 2 REQ'D

SEALING SURFACE - NO STANDING MOLD FLASH OR EJECTOR PINS PERMISSIBLE



SEALING NOTES :

- SEALING CODE 3
DESIGN WILL PASS SALT FOG AND IMMERSION TEST AFTER CONDITIONING AS SPECIFIED IN ESA-644 (WEATHER-PACK), ESA-710 (METRI-PACK), ESA-650 (UNDERHOOD MICRO-PACK), C-4006 (WORLD CONNECTOR), ETC. - WHEN MATED TO MATING PART OR EQUIVALENT.
- PART MUST BE SEALED TO 15 PSIG WITH A LEAK RATE OF LESS THAN 5 CC/MIN, AND SEALANT TO BE USED MUST BE PM-3530-001.
- SEALANT IS NOT PERMISSIBLE ON ANY EXPOSED PORTION OF THE TERMINALS (4 PLCS).
- PART MUST MEET ALL DIMENSIONAL REQUIREMENTS AFTER SEALING AND SMOOTH SEALING SURFACES MUST BE MAINTAINED.
- PART MUST BE PROCESSED AND SHIPPED IN A MANNER WHICH INSURES TERMINAL LOCATION AND STRAIGHTNESS.
- PART TO BE TREATED WITH RUST INHIBITORS CONSISTING OF 1 RINSE IN A 1% SOLUTION OF HOUSHTEN 2033, 1 RINSE IN A 2% SOLUTION OF RUST YET 65. THESE RINSES ARE IN ADDITION TO EXISTING PROCESSES.

NOTES

- UNLESS OTHERWISE SPECIFIED AND/OR INDICATED:
DIMENSIONS ARE TO FACE OF VIEW SHOWN AND AUTOMATICALLY ROUNDED BY COMPUTER FOR INSPECTION (SEE MATH MODEL FOR PRECISE DIMENSIONS). FOR ALL OTHER DIMENSIONS NOT SHOWN BUT REQUIRED FOR TOOL BUILD, SEE MATH MODEL FOR PRECISE TOOL PATH DATA.
- THIS PRODUCT IS NOT CATEGORIZED AS AN APPEARANCE ITEM, MINOR IMPERFECTIONS INCLUDING, BUT NOT LIMITED TO, FLOW MARKS, COLOR BLEMISHES, GATE VESTIGE, AND SOFT FLASH THAT DO NOT AFFECT THE FIT, FORM, OR FUNCTION OF THE PART ARE PERMISSIBLE PER DRNP-4.7-CS-01.
- TYPE 101 IS ASSEMBLED INTO AC SPARK PLUG DIV, AIR TEMPERATURE SENSOR 25036751.
- TYPE 102 IS ASSEMBLED INTO AC SPARK PLUG DIV, COOLANT TEMPERATURE SENSOR 25036708.
- CAVITY NUMBER AND DELPHI LOCATION MAY BE SWAPPED.
- (2,3)X(0,1) DELPHI CORPORATE BRAND TO BE LOCATED ON ANY EXTERIOR SURFACE, PREFERABLY VISIBLE AT FINAL ASSEMBLY. OPTIONAL CONSTRUCTION FOR EXISTING TOOLING MAY BE "PED" OR "NO LOGO".

PART NO	STG	REV	N/P	STATUS	TYPE	MATERIAL SPECIFICATION AND COLOR	MATING CONN ASM	TERMINAL NO.	VOLUME	APPLICABLE SEALING NOTED
12110417	R	06	-	-	101	POLYESTER COMPOUND NATURAL	15335987	12065952 OR 12065953	2,999	
12103629	R	06	-	-	101	12110417	15335987	-	2,999	1 - 5
12084669	R	08	-	-	101	12066018	15335987	-	2,999	1 - 6
12066018	R	08	-	-	101	POLYESTER COMPOUND GRAY	15335987	12065952 OR 12065953	2,999	1
12066016	R	08	-	-	102	POLYESTER COMPOUND BLACK	15336024	12065952 OR 12065953	3,016	1

DELPHI
DELPHI PACKARD ELECTRICAL/ELECTRONIC ARCHITECTURE
WARREN, OH

DATE: 27AP98
 DR: TOM NADASKY, JR.
 APPR: TOM NADASKY, JR.
 CHECK: SHELLY A. HUDAK
 120659

UNLESS OTHERWISE SPECIFIED
 THIS DRAWING IS IN CONFORMANCE WITH THE 1987-1994
 ASME Y14.5M DIMENSIONING AND TOLERANCE PRACTICES
 UNLESS OTHERWISE SPECIFIED, DIMENSIONS ARE TO BE SHOWN UNLESS OTHERWISE SPECIFIED

ALL DIMENSIONS ARE IN MILLIMETERS

PROCESS SENSITIVE DIMENSION

THIRD ANGLE PROJECTION

DO NOT SCALE

DATE: 12059312

SHEET: 11 OF 12