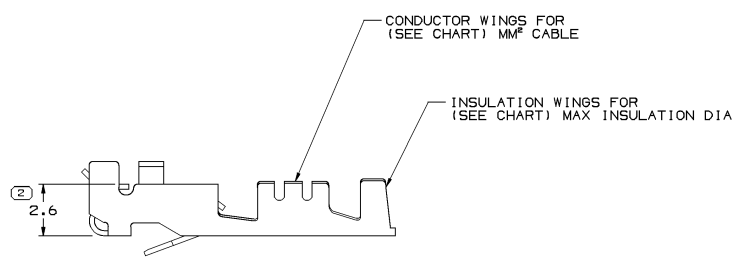
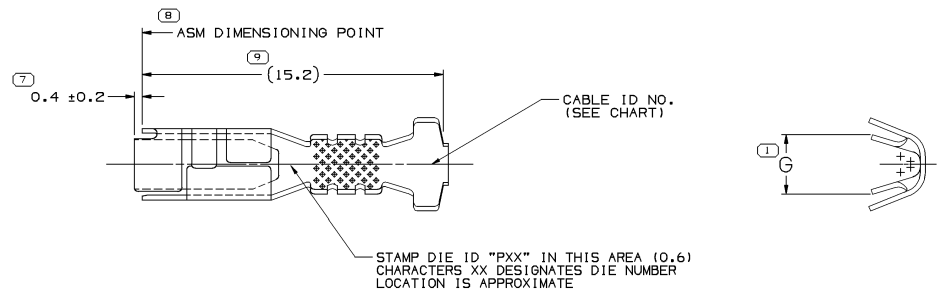
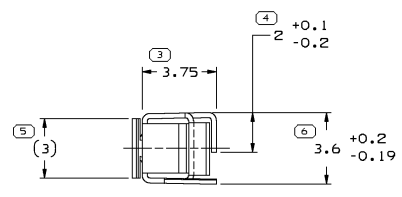


SYMBOL DEFINITION		MISSING SYMBOLS	
A DIMENSION WITHOUT AN INSPECTION REPORT SYMBOL DOES NOT REQUIRE INSPECTION. IT MAY BE CONTROLLED ON THE INDIVIDUAL COMPONENT DRAWING.	TOTAL NO OF INSPECTIONS REQUIRED	9	NO MISSING SYMBOL NUMBER
	LAST NO. USED	9	

DWG STATUS				REVISION HISTORY				AUTH	
DATE	STG	REV	N/P	CHG	ZONE				
17M104	R	03	-	-		ALL PARTS - CLEARED REV COL, REVISED DIMS AND REDRAWN TO PD		253922	CCV FRG WTM
150C04	R	04	-	-		12103360 - OBSOLETE 12103360 & 12077939 - REVISED LOCK TANG		260003	RTV JVM MKM
28SE10	R	05	-	-		ALL ACTIVE PARTS - ADDED TERMINAL ID NOTE		412106	LHT LHT LHT
14FE14	R	06	-	-		12103360 - CORRECTED MSPEC WAS M3604420 C65400 HD		425539	JVR JVM JSM
						12077939 - UPDATED TO MAT'L CALLOUT			



NOTES

- UNLESS OTHERWISE SPECIFIED AND/OR INDICATED: DIMENSIONS ARE TO FACE OF VIEW SHOWN AND AUTOMATICALLY ROUNDED BY COMPUTER FOR INSPECTION
- TERMINAL USED IN 12065454 CONNECTOR OR EQUIVALENT.
- RECOMMENDED MATING BLADE - WIDTH: 2.88/2.42 THICKNESS: 0.86/0.79 LENGTH: 7.1/6.9.
- RECOMMENDED BLADE MATERIAL - MALE BLADE MATERIAL SHOULD HAVE AN ELECTRICAL CONDUCTIVITY > 20% IACS AT 68°F. USE OF MATERIAL WITH CONDUCTIVITY < 20% IACS SHOULD BE APPROVED BY PACKARD ELECTRIC.
- PART MUST BE FREE FROM BURRS, SHARP EDGES, OILS AND SURFACE CONTAMINATES WHICH MIGHT BE DETRIMENTAL TO SATISFACTORY ASSEMBLY. SAFE HANDLING OR FUNCTION OF PART.
- "PXX" INDICATES "P" PLUS LAST TWO DIGITS OF MAKE SERIES NUMBER (PO1, PO2, PO3, ETC).

PART NO	REV	N/P	MAT'L SPEC	SIZE (MMF)	ID	DIA	G
12160248	A1		PM003612-420	1-0.8-0.5	60	2.4-2.03	3±0.3
12103360	02	AB	SN PLATED COOPER ALLOY	0.5-0.35	21	2.19-1.3	2.1
12077939	04	AB	SN PLATED COOPER ALLOY	1-0.8-0.5	60	2.4-2.03	3±0.2

DIMENSIONAL RANGE (MM)		CHART ID
FROM	0	1
TO	12	>12
TOLERANCE UNLESS OTHERWISE SPECIFIED		
±0.1	±0.2	
ANGULAR TOLERANCE 2P		

LINE DRAWN THROUGH A PART NUMBER INDICATES THAT PHYSICAL PARTS ARE NOT AVAILABLE FOR ORDERING.

PART NUMBERS THAT DO NOT HAVE A LINE PRESENT INDICATE THAT PHYSICAL PARTS ARE AVAILABLE FOR ORDERING.

CONTACT DELPHI SALES TO ASSURE AVAILABILITY OF PARTS.

DWG TYPE: PART DRAWING

STYLE: [Symbol]

VOLUME (QTY): [Symbol]    DISTR CODE: [Symbol]

UNLESS OTHERWISE SPECIFIED

THIS DOCUMENT IS IN ACCORDANCE WITH ASME Y14.5M-1994 AS MODIFIED BY THE (M) GLOBAL DIMENSIONING AND TOLERANCING ADDENDUM-2001. SEPARATE PATTERNS OF FEATURES MAY BE DIMED SEPARATELY REGARDLESS OF DATUM REFERENCES.

ALL DIMENSIONS ARE IN MILLIMETERS

REFERENCE

THIRD ANGLE PROJECTION

DO NOT SCALE

USE MATH DATA

**DELPHI**  
DELPHI PACKARD ELECTRICAL/ELECTRONIC ARCHITECTURE

WARREN, OH  
COPYRIGHT 1997 DELPHI CORPORATION AND/OR ITS AFFILIATES. ALL RIGHTS RESERVED.  
REVISED 2014

THIS DRAWING IS THE PROPERTY OF DELPHI CORPORATION AND CONTAINS DELPHI CONFIDENTIAL INFORMATION. THE REPRODUCTION, DISTRIBUTION AND UTILIZATION OF THIS DOCUMENT OR ITS RELATED DATA, AS WELL AS COMMUNICATION OF ANY CONTENT TO OTHERS, WITHOUT EXPRESS AUTHORIZATION, IS PROHIBITED.

DR	DATE
APVD1 E. LUQUENO	31MR97
APVD2 FCO_KOPCA	02AP97
APVD3 D. GALLEGOS	22AP97
APVD4	
APVD5	

SUBSTANCES OF CONCERN AND RECYCLED CONTENT PER DELPHI 10949001

MATERIAL: SEE CHART

DRAWING NAME: TAXI TERM F M/P 280.1 TANG

DRAWING NUMBER: 12059227

SIZE	SCALE	FRAME NO	SHEET NO	REV	N/P
A1	8:1	1	OF 1	2	OF 1