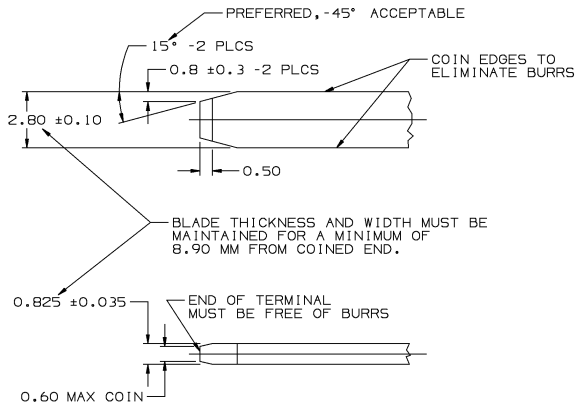


D

DO NOT SCALE



MATERIAL SPECIFICATIONS

RECOMMENDED

BASE METAL - CDA-210, EXTRA SPRING TEMPER

PLATING - 0.0050±0.0025 MM THICK TIN

MINIMUMS

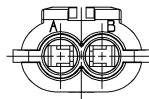
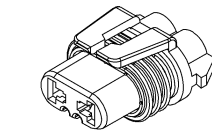
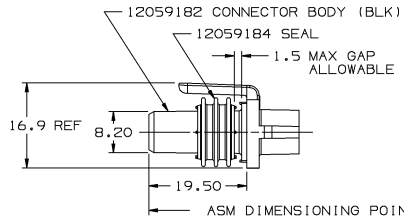
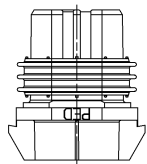
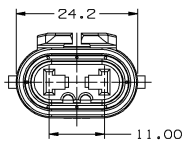
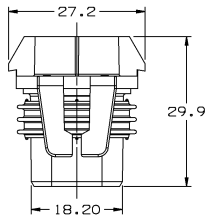
ELECTRICAL CONDUCTIVITY - ≥20% IACS AT 20°C. USE OF A MATERIAL WITH CONDUCTIVITY < 20% IACS MUST BE APPROVED BY PACKARD ELECTRIC MATERIALS ENGINEERING.

TENSILE STRENGTH - 407 MPa

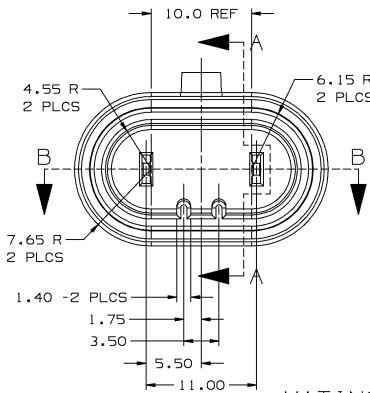
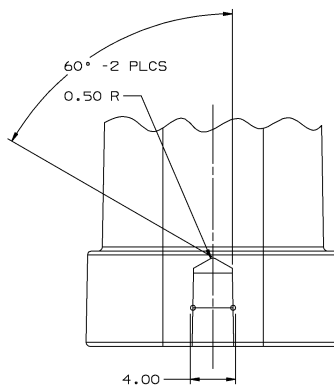
PLATING - FOR LOW ENERGY (≤5V) AND NON-PASSENGER COMPARTMENT POWER CIRCUITS, 0.0050±0.0025 MM THICK TIN. FOR MATERIALS CONTAINING 10% OR MORE ZINC, AN UNDERPLATE OF COPPER 0.0050±0.0025 MM THICK IS REQUIRED.

MATING BLADE INFORMATION

SCALE 8:1



PART NO
1205 9183

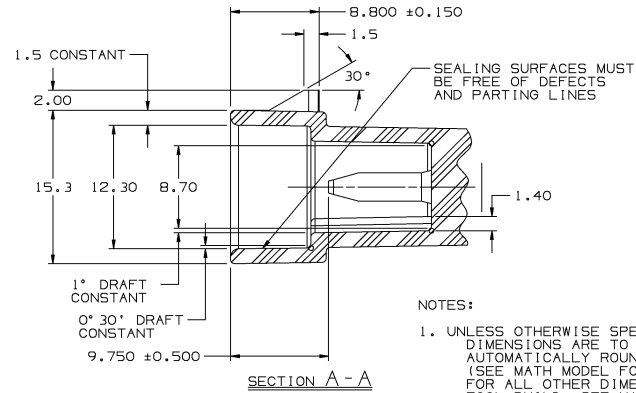
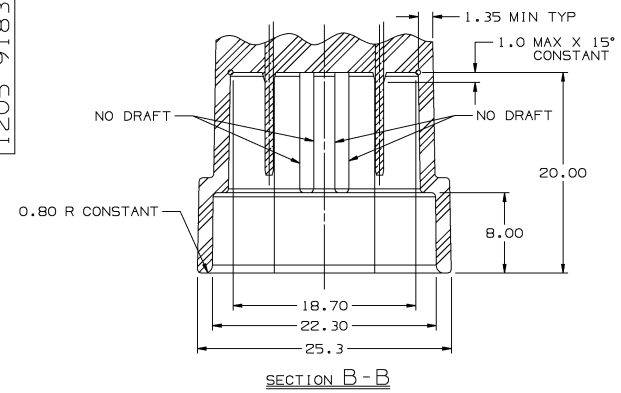


MATING CONNECTOR INFORMATION

SCALE 4:1

RECOMMENDED MATERIAL:

GLASS REINFORCED NYLON OR POLYESTER



NOTES:

- UNLESS OTHERWISE SPECIFIED AND/OR INDICATED: DIMENSIONS ARE TO FACE OF VIEW SHOWN AND AUTOMATICALLY ROUNDED BY COMPUTER FOR INSPECTION. (SEE MATH MODEL FOR PRECISE DIMENSION) FOR ALL OTHER DIMENSIONS NOT SHOWN BUT REQUIRED FOR TOOL BUILD, SEE MATH MODEL FOR PRECISE TOOL PATH DATA.
- DRAFT IS 1° ON ALL OUTSIDE & INSIDE SURFACES UNLESS OTHERWISE INDICATED.
- ALL RADII 0.40 UNLESS OTHERWISE INDICATED.

NOTES:

- CAVITIES TO ACCEPT 12077411 TERMINAL OR EQUIVALENT
- WHEN PARTS ARE SHIPPED, THEY MUST BE PACKED IN PLASTIC BAGS OR SHIPPING CONTAINERS MUST BE LINED WITH PLASTIC LINERS. BAGS OR OR LINERS MUST BE SEALED TO AVOID ENTRY OF FOREIGN MATTER.
- MATES TO HALOGEN HEAD LAMP BULB # 9005 - HIGH BEAM.
- SECONDARY TERMINAL LOCK 12059185 OR EQUIVALENT
- CABLE SEAL 12015323 OR EQUIVALENT
- SEALING CODE 3.

PART NO
1205 9183

DRAWING TYPE DETAIL/CPAD/PID		OTHER DRAWINGS AVAILABLE	
THIRD ANGLE PROJECTION TOLERANCE UNLESS OTHERWISE SPECIFIED DECIMAL ONE PLACE ±0.3 TWO PLACE ±0.15		METRIC DIMENSIONS ARE IN MILLIMETERS UNLESS OTHERWISE SPECIFIED TOLERANCE UNLESS OTHERWISE SPECIFIED ANGULAR ±2°	
CODE NO 6900	QC -C-5110	DES	
DWG DATE 14JAB5	DR J. L. BOZIS 22MY95	CK F. HESTON 22MY95	
SCALE 2:1	APP T.F. CUNNINGHAM 10.JNB5	VOL CM*	
MATERIAL SPEC SEE DRAWING			
NAME ASM CONN 2F M/P 280 SLD			
PART NUMBER 1205 9183		SIZE A1	