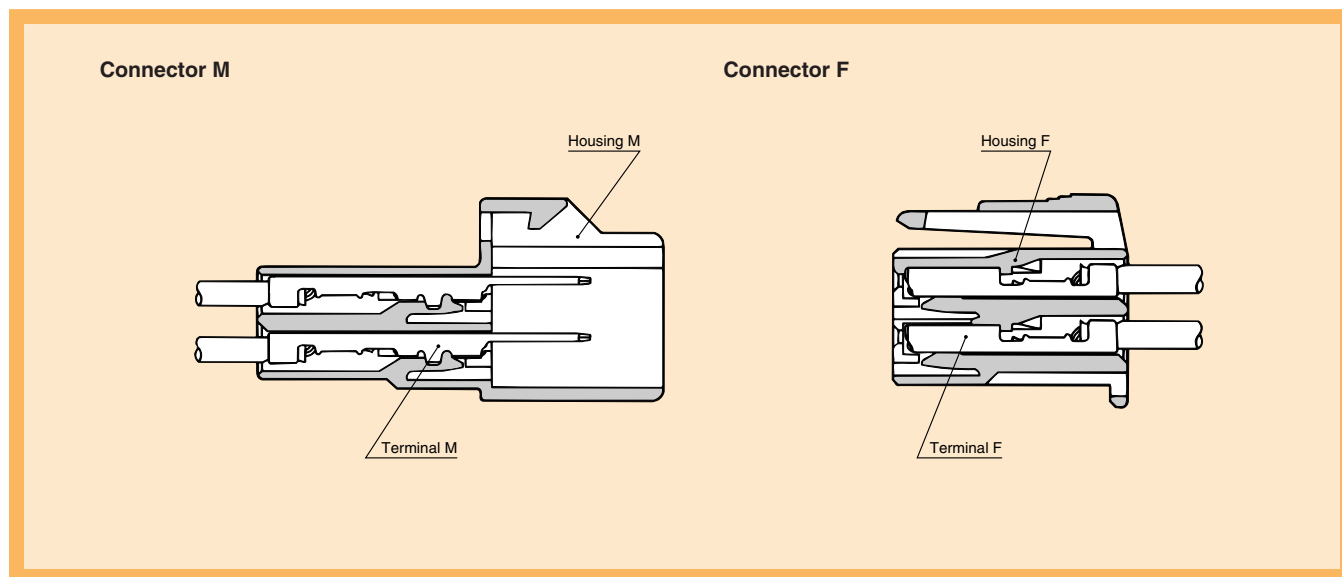


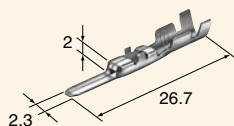
Structure / 構造



Terminal (mm)

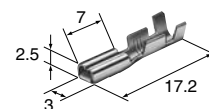
P-02

Cable size (mm ²) 適用電線サイズ	0.2~0.3
Cable overall diameter (mm) 電線仕上り外径	1.4~1.9
Material 材質	Brass 黄銅
Surface treatment 表面処理	Tin-plated Snメッキ
Thickness (mm) 板厚	0.3



M(8230-4272)

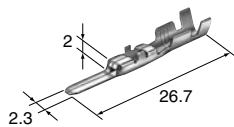
Cable size (mm ²) 適用電線サイズ	0.2~0.3
Cable overall diameter (mm) 電線仕上り外径	1.4~1.9
Material 材質	Brass 黄銅
Surface treatment 表面処理	Tin-plated Snメッキ
Thickness (mm) 板厚	0.25



F(8240-4412)

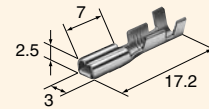
090

Cable size (mm ²) 適用電線サイズ	0.5~1.25
Cable overall diameter (mm) 電線仕上り外径	1.6~2.9
Material 材質	Brass 黄銅
Surface treatment 表面処理	Tin-plated Snメッキ
Thickness (mm) 板厚	0.3



M(8230-4282)

Cable size (mm ²) 適用電線サイズ	0.5~1.25
Cable overall diameter (mm) 電線仕上り外径	1.6~2.9
Material 材質	Brass 黄銅
Surface treatment 表面処理	Tin-plated Snメッキ
Thickness (mm) 板厚	0.25



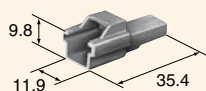
F(8240-4422)

Housing (mm)

Material / 66Nylon
Color / Natural

2way

Ref: Terminal part No. P-02
ターミナル参照頁



M(6090-1031)

Ref: Terminal part No. P-02
ターミナル参照頁

Note
備考 With clamp for 7mm dia.
φ7用クランプ付

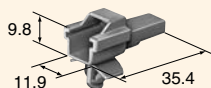


Plate thickness range for clamp :
t=0.7~2.2

M(6090-1126)

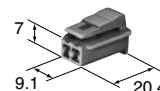
Ref: Terminal part No. P-02
ターミナル参照頁

Note
備考 Flanged
パネル取付タイプ



F(6181-1001)

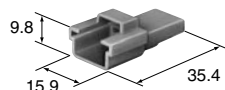
Ref: Terminal part No. P-02
ターミナル参照頁



F(6090-1001)

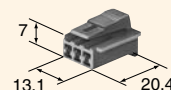
3way

Ref: Terminal part No. P-02
ターミナル参照頁



M(6090-1131)

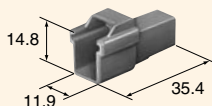
Ref: Terminal part No. P-02
ターミナル参照頁



F(6090-1136)

4way

Ref: Terminal part No. P-02
ターミナル参照頁



M(6090-1041)

Ref: Terminal part No. P-02
ターミナル参照頁

Note
備考 With clamp for 7mm dia.
φ7用クランプ付

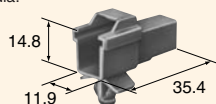
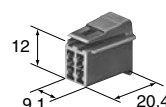


Plate thickness range for clamp :
t=0.7~2.2

M(6090-1123)

Ref: Terminal part No. P-02
ターミナル参照頁



F(6090-1011)

P-03

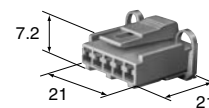
Plate thickness range for clamp=クランプ適用板厚

Housing (mm)

Material / 66Nylon
Color / Natural

5way
(Secondary Locking Type)
(二重係止タイプ)

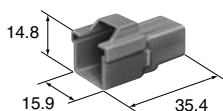
Ref: Terminal part No. P-02
ターミナル参照頁



F(6090-1256)

6way

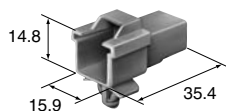
Ref: Terminal part No. P-02
ターミナル参照頁



M(6090-1149)

Ref: Terminal part No. P-02
ターミナル参照頁

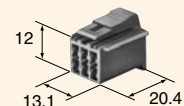
Note
備考 With clamp for 7mm dia.
φ7用クランプ付



M(6090-1124)

Plate thickness range for clamp :
t=0.7~2.2

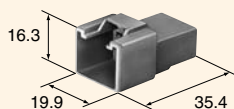
Ref: Terminal part No. P-02
ターミナル参照頁



F(6090-1218)

P-04

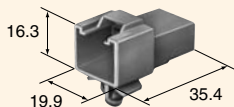
Ref: Terminal part No. P-02
ターミナル参照頁



M(6090-1051)

Ref: Terminal part No. P-02
ターミナル参照頁

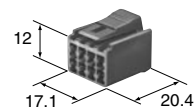
Note
備考 With clamp for 7mm dia.
φ7用クランプ付



M(6090-1125)

Plate thickness range for clamp :
t=0.7~2.2

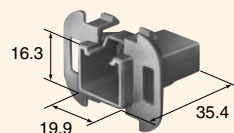
Ref: Terminal part No. P-02
ターミナル参照頁



F(6090-1021)

Ref: Terminal part No. P-02
ターミナル参照頁

Note
備考 Flanged
パネル取付タイプ

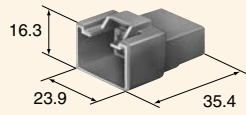


M(6090-1122)

Plate thickness range for clamp=クランプ適用板厚

10way

Ref: Terminal part No. P-02
ターミナル参照頁



M(6090-1056)

Ref: Terminal part No. P-02
ターミナル参照頁

Note
備考 With clamp for 7mm dia.
φ7用クランプ付

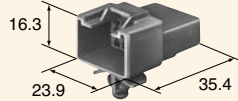
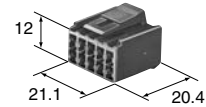


Plate thickness range for clamp :
t=0.7~2.2

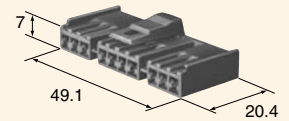
M(6090-1127)

Ref: Terminal part No. P-02
ターミナル参照頁



F(6090-1220)

Ref: Terminal part No. P-02
ターミナル参照頁



F(6090-1254)

10way

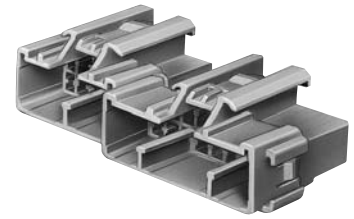
Plate thickness range for clamp=クランプ適用板厚

The connectors which have different number of ways as well as the same number of ways can be connected each other. It is also possible to connect with the block type ET connectors.

Clamping a single connector on a device, etc. where only a narrow clamping location is available makes it possible to clamp a multiple number of connector.

同極数のコネクタ、異なる極数のコネクタ同志の連結が可能です。

また、ETコネクタのブロックタイプとの連結も可能な多目的コネクタです。機器等への固定場所が少ないところにも1つのコネクタを固定することにより多数のコネクタを同時に固定することが可能です。



Housing (mm)

Material / 66Nylon
Color / Natural

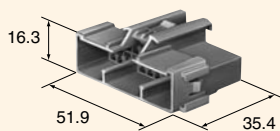
13way	<p>Ref: Terminal part No. P-02 ターミナル参照頁</p> <p>M(6090-1090)</p>	<p>Ref: Terminal part No. P-02 ターミナル参照頁</p> <p>F(6090-1061)</p>
	<p>Ref: Terminal part No. P-02 ターミナル参照頁</p> <p>M(6090-1221)</p>	<p>Ref: Terminal part No. P-02 ターミナル参照頁</p> <p>F(6090-1064)</p>
16way	<p>Ref: Terminal part No. P-02 ターミナル参照頁</p> <p>M(6090-1099)</p>	<p>Ref: Terminal part No. P-02 ターミナル参照頁</p> <p>F(6090-1071)</p>
	<p>Ref: Terminal part No. P-02 ターミナル参照頁</p> <p>M(6090-1101)</p>	<p>Ref: Terminal part No. P-02 ターミナル参照頁</p> <p>F(6090-1073)</p>
20way	<p>Ref: Terminal part No. P-02 ターミナル参照頁</p> <p>M(6090-1107)</p>	<p>Ref: Terminal part No. P-02 ターミナル参照頁</p> <p>F(6090-1081)</p>

Housing (mm)

Material / 66Nylon
Color / Natural

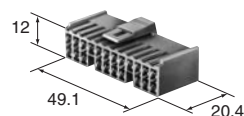
22way

Ref: Terminal part No.
ターミナル参照頁 P-02



M(6090-1112)

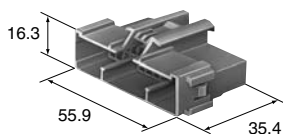
Ref: Terminal part No.
ターミナル参照頁 P-02



F(6090-1086)

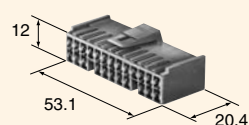
24way

Ref: Terminal part No.
ターミナル参照頁 P-02



M(6090-1113)

Ref: Terminal part No.
ターミナル参照頁 P-02

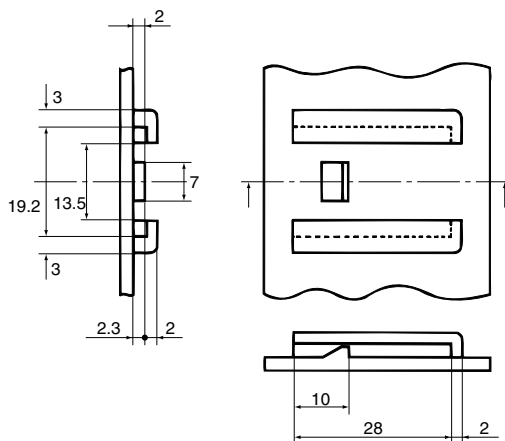


F(6090-1087)

▶▶ Shape of Mating Support (mm) ◀◀

090 Blocking type M housing can be mounted by providing the support as indicated above to the mating parts.

090連結型Mハウジングは、下図のようなサポート部を設ける事により固定することが出来ます。



Note) The dimensions as shown here are reference dimensions and detail dimensions for mounting portion of the mating support are specified in the official drawing. Please contact our sales staff.

※上記寸法は参考寸法です。取付部詳細寸法は別途図面により規定しますので、弊社営業担当にお問い合わせください。

▶▶ Dimensions of Installation Panel (mm) ◀◀

Housings mentioned above can be mounted by machining the panel as indicated in the figure.

下記ハウジングにはパネルに下図の様な加工をする事により、固定することができます。

