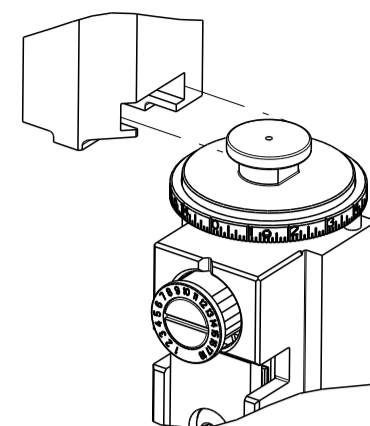


| PART NUMBER | REVISION | DESCRIPTION                     | FEED TYPE |
|-------------|----------|---------------------------------|-----------|
| 4150133-2   | A        | FINE CRIMP HEIGHT ADJUST        | PNEUMATIC |
| 7-4150133-2 | A        | PNEUMATIC AND CRIMP TOOLING KIT | PNEUMATIC |
| 7-4150133-7 | A        | CRIMP TOOLING KIT               | -         |

ATLANTIC VERSION TERMINATOR INTERFACE ADAPTER



| APPLICATOR DATA                |                |      |
|--------------------------------|----------------|------|
| CRIMP                          | SIZE           | TYPE |
| WIRE                           | 4.57 mm [.180] | F    |
| INSUL                          | 7.05 mm [.278] | F    |
| APPL INSTRUCTIONS<br>408-35043 |                |      |

|   |                   |                                    |                   |
|---|-------------------|------------------------------------|-------------------|
| TERMINAL DATA: SUMITOMO TERMINAL SUMITOMO CRIMP SPECIFICATION |                   |                                    |                   |
| TERMINAL NAME: LA TERMINAL                                    |                   |                                    |                   |
| WIRE STRIP LENGTH   |                   | TERMINAL INSULATION DIAMETER RANGE |                   |
| 6.10-6.90 mm [.240-.272 IN]                                   |                   | ∅ 3.26-4.11 mm [.128-.162 IN]      |                   |
| TERMINAL APPLICATION SPECIFICATION                            | LA206-1 Rev -     |                                    | AT9106            |
| TERMINALS APPLIED   |                   |                                    |                   |
| TE TERMINAL   | SUMITOMO TERMINAL | TE TERMINAL                        | SUMITOMO TERMINAL |
| 3311088-1   | 8110-2060         | 3311088-2                          | 8110-2062         |
| 3311088-3   | 8110-2066         |                                    |                   |

| WIRE SIZE           | CRIMP HEIGHT mm [INCH]     | CRIMP HEIGHT REFERENCE SETTING |
|---------------------|----------------------------|--------------------------------|
| 3.00mm <sup>2</sup> | 2.85+/-0.05 [.112+/- .002] | 6.2                            |
| 2.00mm <sup>2</sup> | 2.70+/-0.05 [.106+/- .002] | 8.3                            |

| WIRE SIZE | CRIMP HEIGHT mm [INCH]     | CRIMP HEIGHT REFERENCE SETTING |
|-----------|----------------------------|--------------------------------|
| 12 AWG    | 2.85+/-0.05 [.112+/- .002] | 6.2                            |

- RECOMMENDED SPARE PARTS.
- REFER TO SUPPLIED INSTRUCTION SHEET FOR CLEANING, LUBRICATION & STORAGE OF APPLICATOR.
- APPLY PART NUMBER 1-23419-5 LOCTITE TO THREADS OF ITEM 180. APPLY PART NUMBER 2-23419-6 LOCTITE TO THREADS OF ITEM 242.
- CRIMP HEIGHT REFERENCE SETTING WAS THE SETTING USED WHEN THE APPLICATOR WAS QUALIFIED AT THE FACTORY. ADJUSTMENT MAY BE NECESSARY WHEN RUNNING APPLICATOR IN THE FIELD.
- TERMINAL PITCH NOT COMPATIBLE WITH MECHANICAL FEED. 6. UNLESS SPECIFIED OTHERWISE TORQUE VALUES SHALL BE USED PER DOCUMENT 101-35000.
- TERMINAL LUBRICANT IS RECOMMENDED.

**\*WARNING**  
ON INSTALLATION, SET WIRE DISC TO CRIMP HEIGHT REFERENCE SETTING FOR LARGEST WIRE SIZE. CRIMP HEIGHT REFERENCE SETTINGS GREATER THAN THE VALUE SHOWN MAY CAUSE DAMAGE TO THE CRIMP TOOLING, REFER TO THE INSTRUCTION SHEET FOR PROPER SETUP AND ADJUSTMENTS.

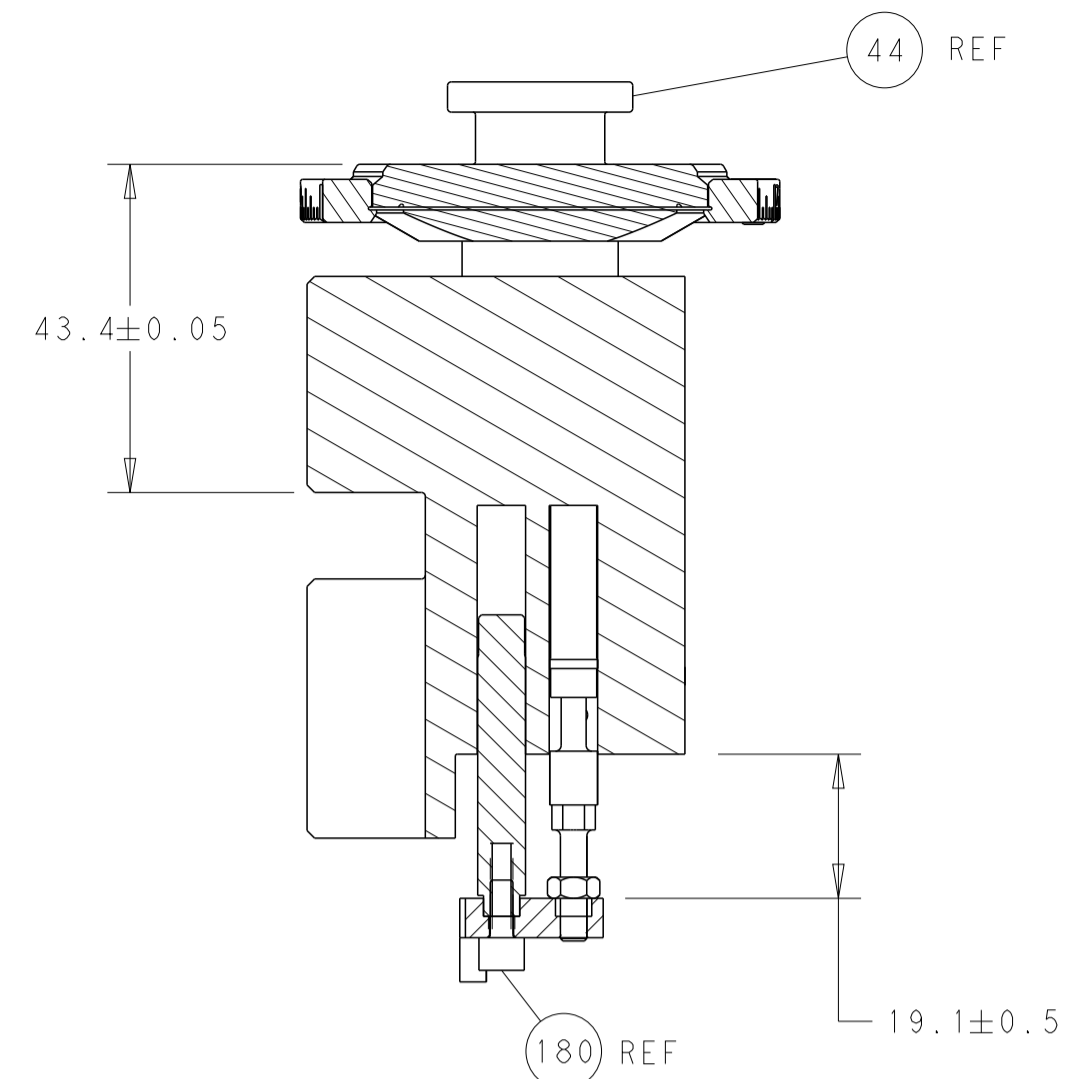
**ATLANTIC VERSION**  
Shown on sheets 1 of 4 & 2 of 4  
(Pacific version shown on sheets 3 of 4 & 4 of 4)

| LOC | DIST | REVISIONS |     |             |           |     |      |
|-----|------|-----------|-----|-------------|-----------|-----|------|
|     |      | P         | LTN | DESCRIPTION | DATE      | OWN | APVD |
| A   | 66   | 1         |     | PRELIMINARY | 03FEB2022 | ROY | GWB  |
|     |      | A         |     | RELEASED    | 22MAR2022 | ROY | JAH  |

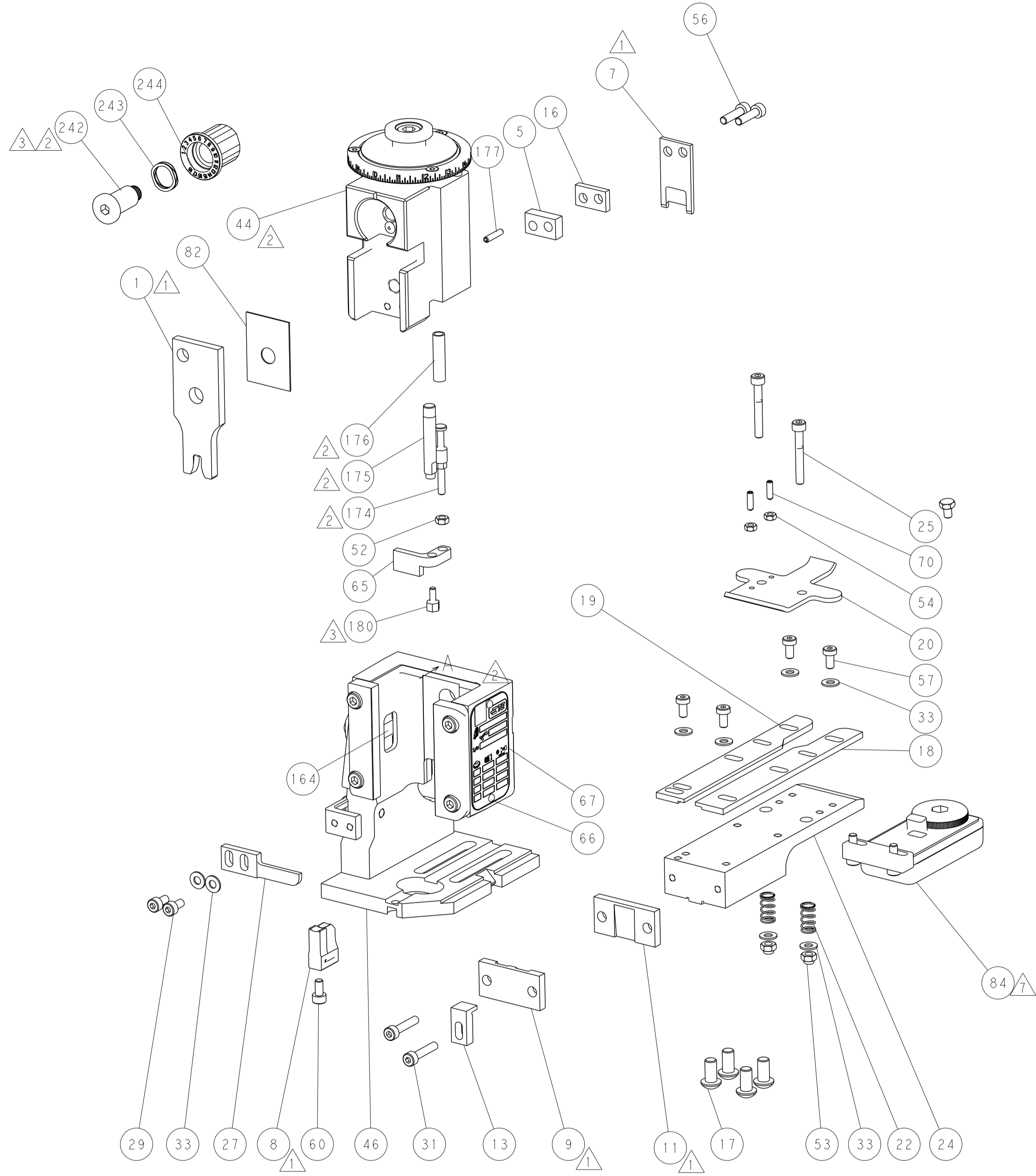
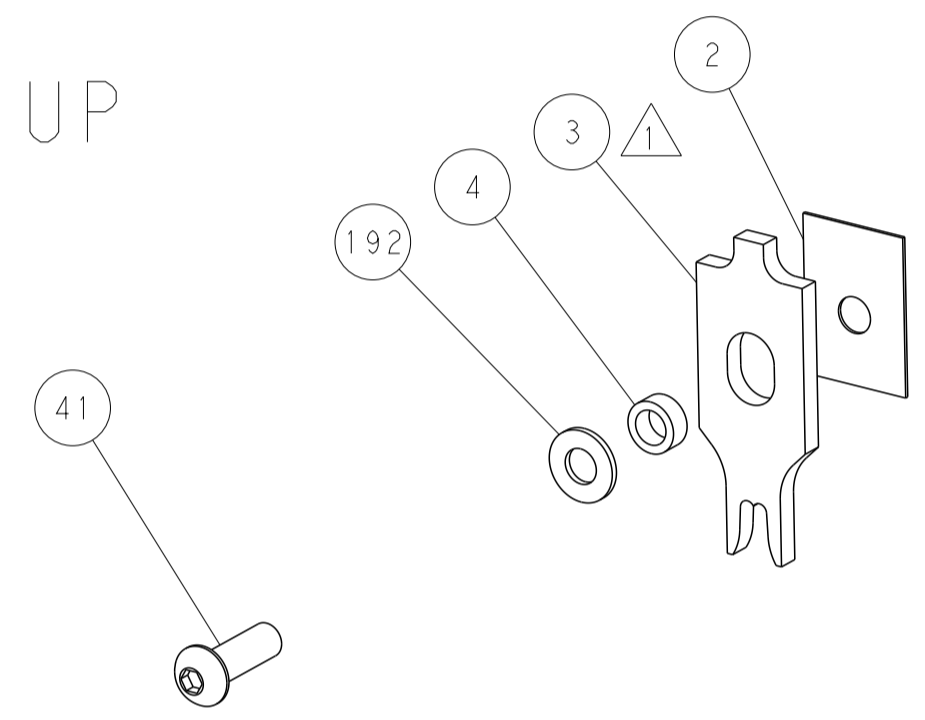
|   |        |    |             |                                     |         |
|---|--------|----|-------------|-------------------------------------|---------|
| - | 1      | 1  | 2119641-1   | FEED CAM, AIR FEED                  | 248     |
| - | 1      | 1  | 2119082-3   | CAM, SNAIL, INSULATION ADJUSTMENT   | 244     |
| - | 1      | 1  | 2079764-1   | WASHER, WAVE SPRING, CREST-TO-CREST | 243     |
| - | 1      | 1  | 2119083-1   | RETAINER, INSULATION DIAL           | 242     |
| - | 1      | 1  | 2844940-4   | AIR FEED MODULE                     | 238     |
| - | 1      | 1  | 1-18028-0   | WASHER, FLAT, REG M8                | 192     |
| - | 1      | 1  | 1752354-2   | STANDOFF, HOLD-DOWN                 | 180     |
| - | 1      | 1  | 6-993111-6  | PIN, SLOTTED SPRING 3.0 X 14.0      | 177     |
| - | 1      | 1  | 8-22280-7   | SPRING, COMPRESSION                 | 176     |
| - | 1      | 1  | 1752353-2   | GUIDE PIN, HOLDDOWN                 | 175     |
| - | 1      | 1  | 1901680-2   | GUIDE PIN, HOLDDOWN                 | 174     |
| - | REFREF |    | 994970-2    | COUNTER, MAGNETIC                   | 164     |
| - | 1      | 1  | 2119955-2   | ASSY, LUBRICATOR, END FEED          | 84      |
| - | 1      | 1  | 455888-5    | SPACER, CRIMPER                     | 82      |
| - | 1      | 1  | 1803607-4   | DOCUMENTATION PACKAGE               | 71      |
| - | 2      | 2  | 2-18032-2   | SCR, SET, FLT PNT, M3 X 10.0        | 70      |
| - | 1      | 1  | 2119740-1   | TAG, IDENTIFICATION                 | 67      |
| - | 2      | 2  | 2168078-1   | SCREW, DRIVE, RH, RoHS, 2 x .188    | 66      |
| - | 1      | 1  | 1901681-1   | HOLDDOWN, TERMINAL                  | 65      |
| - | 1      | 1  | 2168083-2   | SCR, SKT HD CAP, RoHS, M4 X 8.0     | 60      |
| - | 1      | 1  | 5-18022-5   | SCR, HEX HD CAP, M4 X 6.0           | 59      |
| - | 4      | 4  | 2168400-4   | SHCS, LOW HEAD, RoHS, M4 X 8        | 57      |
| - | 2      | 2  | 2168083-8   | SCR, SKT HD CAP, RoHS, M4 X 16      | 56      |
| - | 2      | 2  | 5018030-1   | NUT, HEX, REG, RoHS, M3             | 54      |
| - | 2      | 2  | 986965-8    | NUT, LOCK, HEX, TORQUE (M4)         | 53      |
| - | 1      | 1  | 1-5018030-0 | NUT, HEX, REG, RoHS, M3.5           | 52      |
| - | 1      | 1  | 2063961-9   | FEED FINGER                         | 51      |
| - | 1      | 1  | 18023-9     | SCR, SKT HD CAP M4 X 6.0            | 49      |
| - | 1      | 1  | 2119655-5   | APPLICATOR BASIC ASSEMBLY, EF       | 46      |
| - | 1      | 1  | 1803517-1   | RAM ASSEMBLY, EF ATLANTIC           | 44      |
| - | 1      | 1  | 1803602-1   | SCR, BHSC, RoHS (M8 X 25)           | 41      |
| - | 8      | 8  | 1-18028-2   | WASHER, FLAT, REG M4                | 33      |
| - | 2      | 2  | 2168083-9   | SCR, SKT HD CAP, RoHS, M4 X 20      | 31      |
| - | 2      | 2  | 2168083-2   | SCR, SKT HD CAP, RoHS, M4 X 8.0     | 29      |
| - | 1      | 1  | 240639-1    | STRIPPER (MACHINING)                | 27      |
| - | 2      | 2  | 1-2168083-5 | SCR, SKT HD CAP, RoHS, M4 X 30      | 25      |
| - | 1      | 1  | 1752371-5   | PLATE, STRIP GUIDE                  | 24      |
| - | 2      | 2  | 22281-8     | SPRING, COMPRESSION                 | 22      |
| - | 1      | 1  | 1803292-4   | DRAG                                | 20      |
| - | 1      | 1  | 1-1901696-9 | STRIP GUIDE, REAR                   | 19      |
| - | 1      | 1  | 1-1901695-9 | STRIP GUIDE, FRONT                  | 18      |
| - | 4      | 4  | 1-2079383-1 | SCR, BHSC, RoHS (M6 X 12)           | 17      |
| - | 1      | 1  | 4-240641-6  | SPACER                              | 16      |
| - | 1      | 1  | 1752360-1   | SPACER, HOLD-DOWN                   | 13      |
| - | 1      | 1  | 240644-9    | PLATE, REAR SHEAR                   | 11      |
| - | -      | -  | -           | -                                   | 10      |
| - | 1      | 1  | 690482-5    | PLATE, FRONT SHEAR                  | 9       |
| 1 | 2      | 1  | 1803425-5   | ANVIL, COMBINATION, END FEED        | 8       |
| - | 1      | 1  | 2217206-9   | BLADE, SLUG                         | 7       |
| - | -      | -  | -           | -                                   | 6       |
| - | 1      | 1  | 6-240641-5  | SPACER                              | 5       |
| - | 1      | 1  | 1-238011-4  | BLOCK, CRIMPER SPACER               | 4       |
| 1 | 2      | 1  | 4-1803384-2 | CRIMPER, INSULATION F               | 3       |
| - | 1      | 1  | 455888-6    | SPACER, CRIMPER                     | 2       |
| 1 | 2      | 1  | 1-456412-0  | CRIMPER, WIRE .180 F PREMIUM        | 1       |
| - | 77     | 72 | -2          | PART NO                             | ITEM NO |
| - | -      | -  | -           | DESCRIPTION                         |         |

|  |  |   |   |
|--|--|---|---|
| <small>THIS DRAWING IS UNPUBLISHED. RELEASED FOR PUBLICATION. BY TYCO ELECTRONICS CORPORATION. ALL RIGHTS RESERVED. COPYRIGHT 2020</small> |  | DWN R. KNEPPER 02FEB2022<br>CHK G. BAILEY 02FEB2022<br>APVD G. BEAVER 02FEB2022                                     | TE Connectivity<br>Harrisburg, PA 17105-3608  |
| DIMENSIONS: mm<br>   |  | TOLERANCES UNLESS OTHERWISE SPECIFIED:<br>0 PLC ±<br>1 PLC ±<br>2 PLC ±<br>3 PLC ±<br>4 PLC ±<br>ANGLES ±<br>FINISH | NAME: OCEAN 2.0 End Feed Applicator<br>SIZE: A   CAGE CODE: 00779   DRAWING NO: 4150133<br>RESTRICTED TO: - |
| MATERIAL: -  |  | WEIGHT: -   | Customer Accessible Production Drawing   SCALE: 1:1   SHEET: 1 of 4   REV: A                                |

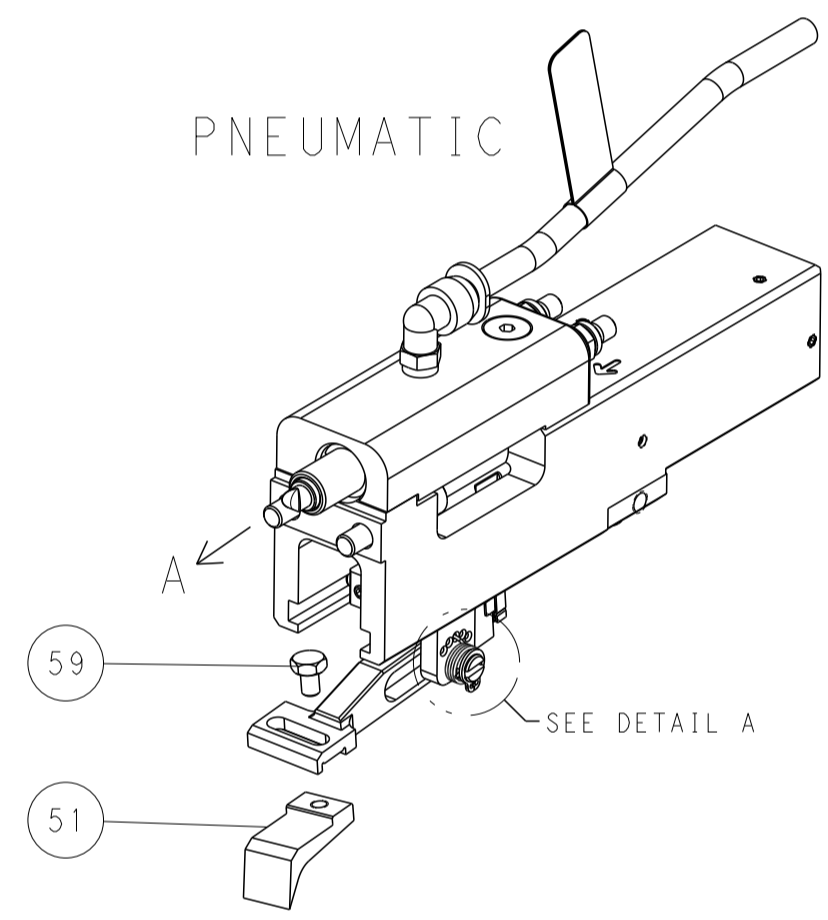
| LOC | DIST | REVISIONS   |      |     |      |
|-----|------|-------------|------|-----|------|
| P   | LTN  | DESCRIPTION | DATE | OWN | APVD |
| A   | 66   | SEE SHEET 1 | -    | -   | -    |
|     |      |             |      |     |      |
|     |      |             |      |     |      |



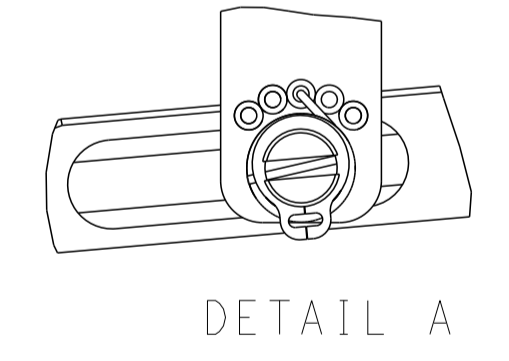
RAM AND HOLDDOWN SET-UP



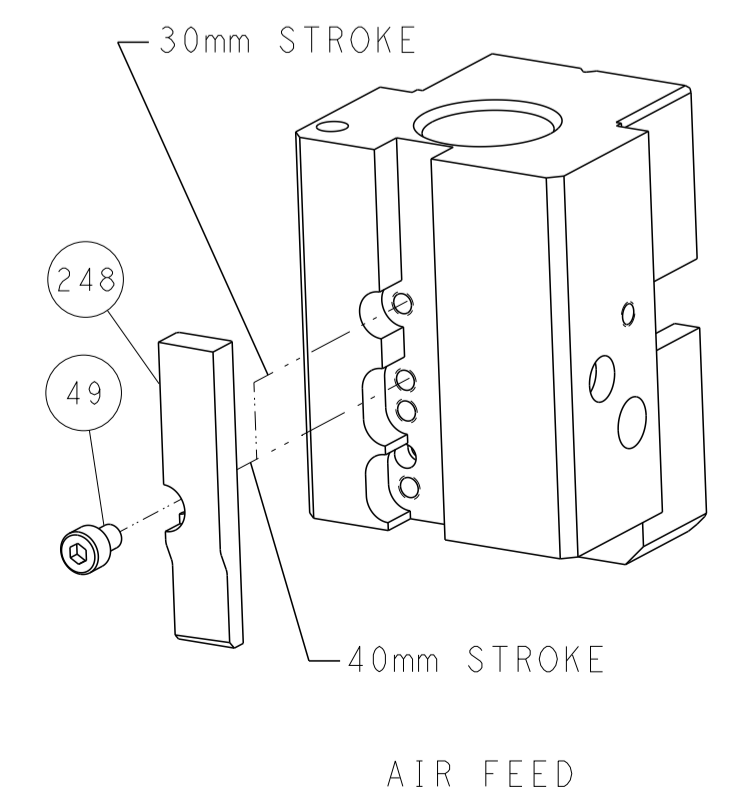
FEED TYPE



FEED SPRING SETTING POSITION



CAM POSITION

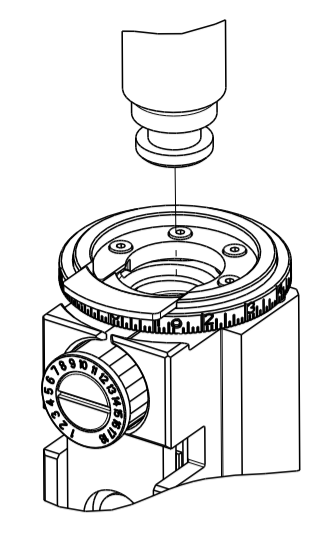


**ATLANTIC VERSION**  
 Shown on sheets 1 of 4 & 2 of 4  
 (Pacific version shown on sheets 3 of 4 & 4 of 4)

|   |  |   |   |
|---|--|---|---|
| <small>THIS DRAWING IS UNPUBLISHED. RELEASED FOR PUBLICATION BY TYCO ELECTRONICS CORPORATION. ALL RIGHTS RESERVED.</small>            |  | DWN: R. KNEPPER 02FEB2022<br>CHK: G. BAILEY 02FEB2022<br>APVD: G. BEAVER 02FEB2022    | <b>TE</b> TE Connectivity<br>Harrisburg, PA 17105-3608                      |
| DIMENSIONS: mm<br>TOLERANCES UNLESS OTHERWISE SPECIFIED:<br>0 PLC ±<br>1 PLC ±<br>2 PLC ±<br>3 PLC ±<br>4 PLC ±<br>ANGLES ±<br>FINISH |  | NAME: OCEAN 2.0 End Feed Applicator<br>APPLICATION SPEC: -<br>WEIGHT: -<br>SCALE: 1:1 | SIZE: A<br>CAGE CODE: 00779<br>DRAWING NO: 4150133<br>SHEET 2 OF 4<br>REV A |
| MATERIAL: -<br>FINISH: -  |  | RESTRICTED TO: -<br>Customer Accessible Production Drawing                            |   |

| PART NUMBER | REVISION | DESCRIPTION              | FEED TYPE |
|-------------|----------|--------------------------|-----------|
| 2-4150133-2 | A        | FINE CRIMP HEIGHT ADJUST | PNEUMATIC |
| 7-4150133-7 | A        | CRIMP TOOLING KIT        | -         |

PACIFIC VERSION TERMINATOR  
 INTERFACE ADAPTER



| APPLICATOR DATA                |                |      |
|--------------------------------|----------------|------|
| CRIMP                          | SIZE           | TYPE |
| WIRE                           | 4.57 mm [.180] | F    |
| INSUL                          | 7.05 mm [.278] | F    |
| APPL INSTRUCTIONS<br>408-35043 |                |      |

| TERMINAL DATA: SUMITOMO TERMINAL SUMITOMO CRIMP SPECIFICATION |                                    |             |                   |
|---|------------------------------------|-------------|-------------------|
| TERMINAL NAME: LA TERMINAL                                    |                                    |             |                   |
| WIRE STRIP LENGTH   | TERMINAL INSULATION DIAMETER RANGE |             |                   |
| 6.10-6.90 mm [.240-.272 IN]                                   | 3.26-4.11 mm [.128-.162 IN]        |             |                   |
| TERMINAL APPLICATION SPECIFICATION                            | LA206-1 Rev -                      | AT9106      |                   |
| TERMINALS APPLIED   |                                    |             |                   |
| TE TERMINAL   | SUMITOMO TERMINAL                  | TE TERMINAL | SUMITOMO TERMINAL |
| 3311088-1   | 8110-2060                          | 3311088-2   | 8110-2062         |
| 3311088-3   | 8110-2066                          |             |                   |

| WIRE SIZE | CRIMP HEIGHT mm [INCH]     | CRIMP HEIGHT REFERENCE SETTING |
|-----------|----------------------------|--------------------------------|
| 3.00mm2   | 2.85+/-0.05 [.112+/- .002] | 6.2                            |
| 2.00mm2   | 2.70+/-0.05 [.106+/- .002] | 8.3                            |

| WIRE SIZE | CRIMP HEIGHT mm [INCH]     | CRIMP HEIGHT REFERENCE SETTING |
|-----------|----------------------------|--------------------------------|
| 12 AWG    | 2.85+/-0.05 [.112+/- .002] | 6.2                            |

- RECOMMENDED SPARE PARTS.
- REFER TO SUPPLIED INSTRUCTION SHEET FOR CLEANING, LUBRICATION & STORAGE OF APPLICATOR.
- APPLY PART NUMBER 1-23419-5 LOCTITE TO THREADS OF ITEM 180. APPLY PART NUMBER 2-23419-6 LOCTITE TO THREADS OF ITEM 242.
- CRIMP HEIGHT REFERENCE SETTING WAS THE SETTING USED WHEN THE APPLICATOR WAS QUALIFIED AT THE FACTORY. ADJUSTMENT MAY BE NECESSARY WHEN RUNNING APPLICATOR IN THE FIELD.
- TERMINAL PITCH NOT COMPATIBLE WITH MECHANICAL FEED. UNLESS SPECIFIED OTHERWISE TORQUE VALUES SHALL BE USED PER DOCUMENT 101-35000.
- TERMINAL LUBRICANT IS RECOMMENDED.

**\*WARNING**  
 ON INSTALLATION, SET WIRE DISC TO CRIMP HEIGHT REFERENCE SETTING FOR LARGEST WIRE SIZE. CRIMP HEIGHT REFERENCE SETTINGS GREATER THAN THE VALUE SHOWN MAY CAUSE DAMAGE TO THE CRIMP TOOLING, REFER TO THE INSTRUCTION SHEET FOR PROPER SETUP AND ADJUSTMENTS.

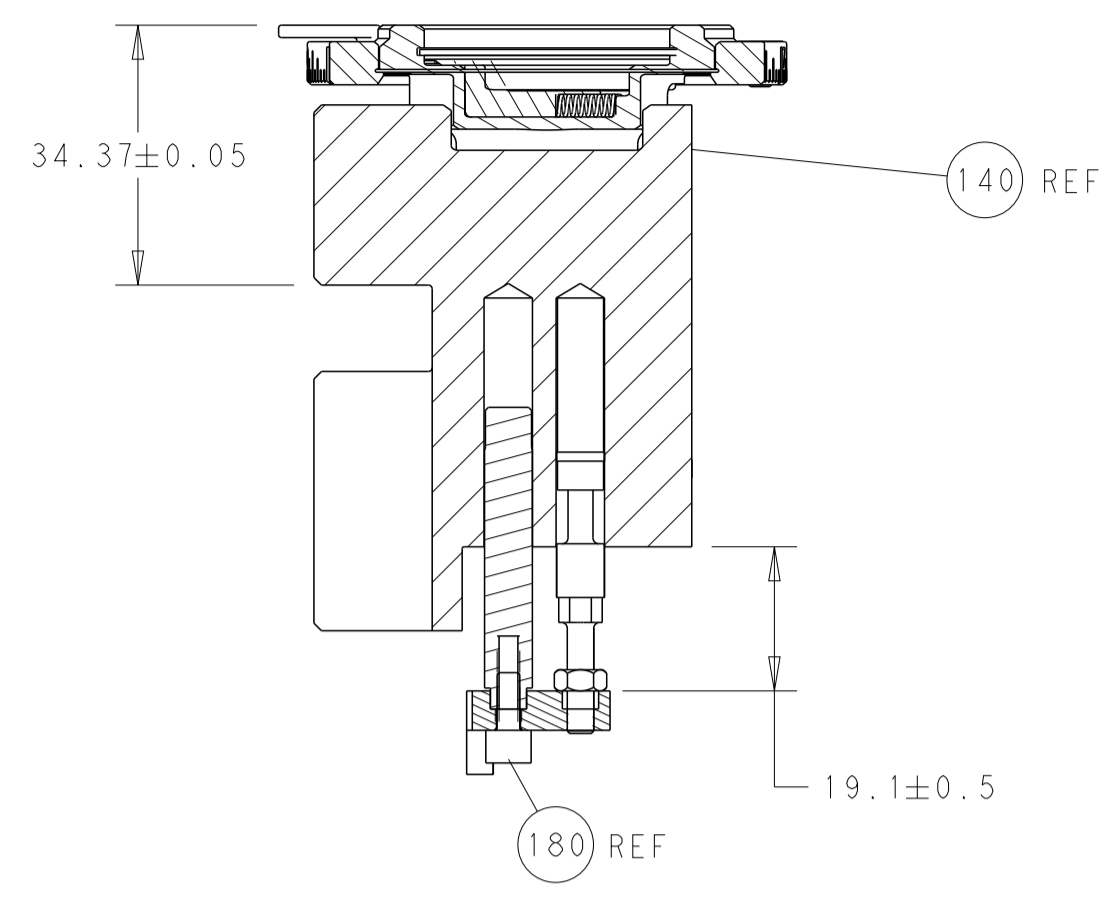
| LOC | DIST | REVISIONS |     |             |      |     |      |
|-----|------|-----------|-----|-------------|------|-----|------|
|     |      | P         | LTN | DESCRIPTION | DATE | OWN | APVD |
| A   | 66   | -         | -   | SEE SHEET 1 | -    | -   | -    |

|   |       |             |                                     |                            |     |
|---|-------|-------------|-------------------------------------|----------------------------|-----|
| - | 1     | 2119082-3   | CAM, SNAIL, INSULATION ADJUSTMENT   | 244                        |     |
| - | 1     | 2079764-1   | WASHER, WAVE SPRING, CREST-TO-CREST | 243                        |     |
| 3 | -     | 1           | 2119083-1                           | RETAINER, INSULATION DIAL  | 242 |
| - | 1     | 2844940-4   | AIR FEED MODULE                     | 238                        |     |
| - | 1     | 1-18028-0   | WASHER, FLAT, REG M8                | 192                        |     |
| - | 4     | 2079383-9   | SCR, BHSC, RoHS (M6 X 20)           | 186                        |     |
| 3 | -     | 1           | 1752354-2                           | STANDOFF, HOLD-DOWN        | 180 |
| - | 1     | 6-993111-6  | PIN, SLOTTED SPRING 3.0 X 14.0      | 177                        |     |
| - | 1     | 8-22280-7   | SPRING, COMPRESSION                 | 176                        |     |
| - | 1     | 1752353-2   | GUIDE PIN, HOLDDOWN                 | 175                        |     |
| - | 1     | 1901680-2   | GUIDE PIN, HOLDDOWN                 | 174                        |     |
| - | REF   | 994970-2    | COUNTER, MAGNETIC                   | 164                        |     |
| - | 1     | 2119641-2   | FEED CAM, AIR FEED                  | 152                        |     |
| - | 1     | 2168083-8   | SCR, SKT HD CAP, RoHS, M4 X 16      | 144                        |     |
| - | 1     | 2119655-6   | APPLICATOR BASIC ASSEMBLY, EF       | 141                        |     |
| - | 1     | 1803518-1   | RAM ASSEMBLY, EF PACIFIC            | 140                        |     |
| 1 | -     | 1           | 2119955-2                           | ASSY, LUBRICATOR, END FEED | 84  |
| - | 1     | 455888-5    | SPACER, CRIMPER                     | 82                         |     |
| - | 1     | 1803607-4   | DOCUMENTATION PACKAGE               | 71                         |     |
| - | 2     | 2-18032-2   | SCR, SET, FLT PNT, M3 X 10.0        | 70                         |     |
| - | 1     | 2119740-1   | TAG, IDENTIFICATION                 | 67                         |     |
| - | 2     | 2168078-1   | SCREW, DRIVE, RH, RoHS, 2 x .188    | 66                         |     |
| - | 1     | 1901681-1   | HOLDDOWN, TERMINAL                  | 65                         |     |
| - | 1     | 5-18022-5   | SCR, HEX HD CAP, M4 X 6.0           | 59                         |     |
| - | 4     | 2168400-4   | SHCS, LOW HEAD, RoHS, M4 X 8        | 57                         |     |
| - | 2     | 2168083-8   | SCR, SKT HD CAP, RoHS, M4 X 16      | 56                         |     |
| - | 2     | 5018030-1   | NUT, HEX, REG, RoHS, M3             | 54                         |     |
| - | 2     | 986965-8    | NUT, LOCK, HEX, TORQUE (M4)         | 53                         |     |
| - | 1     | 1-5018030-0 | NUT, HEX, REG, RoHS, M3.5           | 52                         |     |
| - | 1     | 2063961-9   | FEED FINGER                         | 51                         |     |
| - | 1     | 18023-9     | SCR, SKT HD CAP M4 X 6.0            | 49                         |     |
| - | 1     | 1803602-1   | SCR, BHSC, RoHS (M8 X 25)           | 41                         |     |
| - | 8     | 1-18028-2   | WASHER, FLAT, REG M4                | 33                         |     |
| - | 2     | 2168083-9   | SCR, SKT HD CAP, RoHS, M4 X 20      | 31                         |     |
| - | 2     | 2168083-2   | SCR, SKT HD CAP, RoHS, M4 X 8.0     | 29                         |     |
| - | 1     | 240639-1    | STRIPPER (MACHINING)                | 27                         |     |
| - | 2     | 1-2168083-5 | SCR, SKT HD CAP, RoHS, M4 X 30      | 25                         |     |
| - | 1     | 1752371-5   | PLATE, STRIP GUIDE                  | 24                         |     |
| - | 2     | 22281-8     | SPRING, COMPRESSION                 | 22                         |     |
| - | 1     | 1803292-4   | DRAG                                | 20                         |     |
| - | 1     | 1-1901696-9 | STRIP GUIDE, REAR                   | 19                         |     |
| - | 1     | 1-1901695-9 | STRIP GUIDE, FRONT                  | 18                         |     |
| - | 1     | 4-240641-6  | SPACER                              | 16                         |     |
| - | 1     | 1752360-1   | SPACER, HOLD-DOWN                   | 13                         |     |
| 1 | -     | 1           | 240644-9                            | PLATE, REAR SHEAR          | 11  |
| - | -     | -           | -                                   | 10                         |     |
| 1 | -     | 1           | 690482-5                            | PLATE, FRONT SHEAR         | 9   |
| 1 | 1     | 1803425-5   | ANVIL, COMBINATION, END FEED        | 8                          |     |
| 1 | -     | 1           | 2217206-9                           | BLADE, SLUG                | 7   |
| - | -     | -           | -                                   | 6                          |     |
| - | 1     | 6-240641-5  | SPACER                              | 5                          |     |
| - | 1     | 1-238011-4  | BLOCK, CRIMPER SPACER               | 4                          |     |
| 1 | 1     | 4-1803384-2 | CRIMPER, INSULATION F               | 3                          |     |
| - | 1     | 455888-6    | SPACER, CRIMPER                     | 2                          |     |
| 1 | 1     | 1-456412-0  | CRIMPER, WIRE .180 F PREMIUM        | 1                          |     |
| - | 77-22 | PART NO     | DESCRIPTION                         | ITEM NO                    |     |

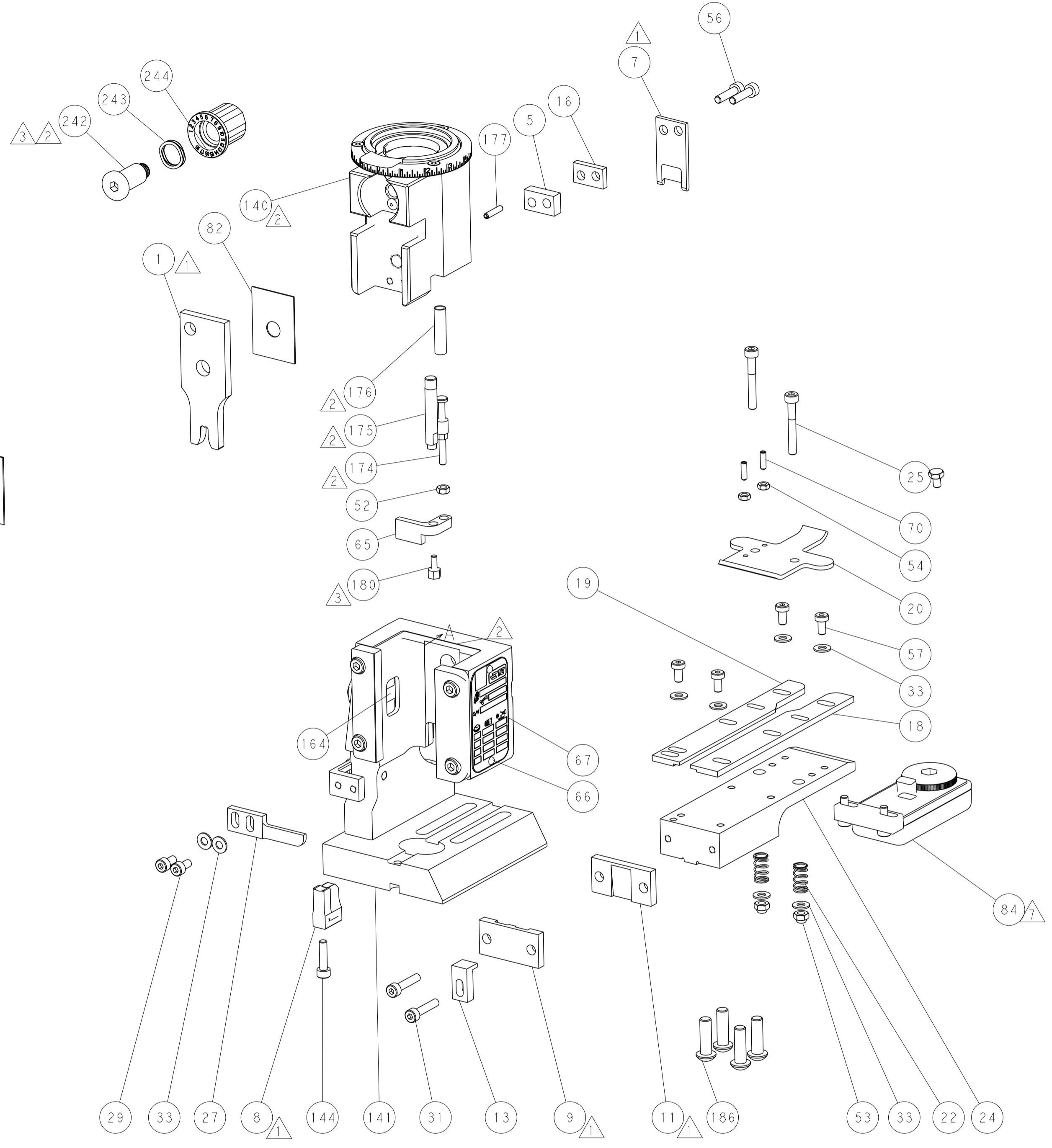
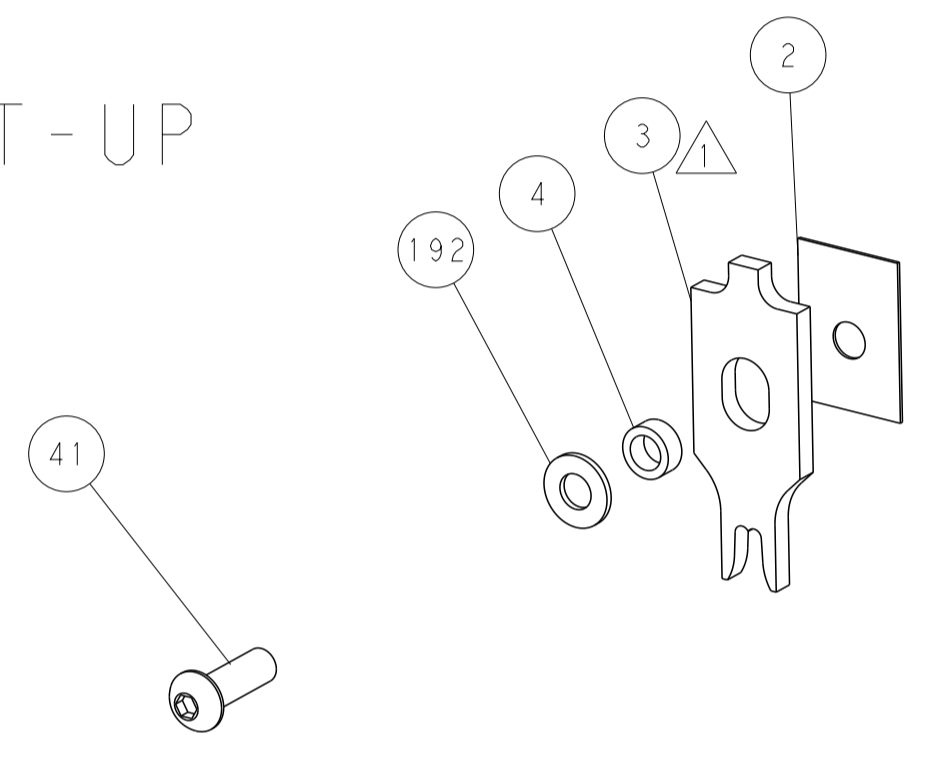
PACIFIC VERSION  
 Shown on sheets 3 of 4 & 4 of 4  
 (Atlantic version shown on sheets 1 of 4 & 2 of 4)

|                       |  |   |  |   |  |   |  |
|-----------------------|--|---|--|---|--|---|--|
| DIMENSIONS: mm<br>    |  | TOLERANCES UNLESS OTHERWISE SPECIFIED:<br>0 PLC ±<br>1 PLC ±<br>2 PLC ±<br>3 PLC ±<br>4 PLC ±<br>ANGLES ±<br>FINISH ± |  | DWG: R. KNEPPER 02FEB2022<br>CHK: G. BAILEY 02FEB2022<br>APVD: G. BEAVER 02FEB2022<br>PRODUCT SPEC: -<br>APPLICATION SPEC: -<br>WEIGHT: -<br>SCALE: 1:1 |  | NAME: OCEAN 2.0 End Feed Applicator<br>SIZE: A   CAGE CODE: 00779   DRAWING NO: 4150133<br>RESTRICTED TO: -<br>SHEET 3 OF 4 REV A |  |
| MATERIAL: - FINISH: - |  |   |  | Customer Accessible Production Drawing  |  |   |  |

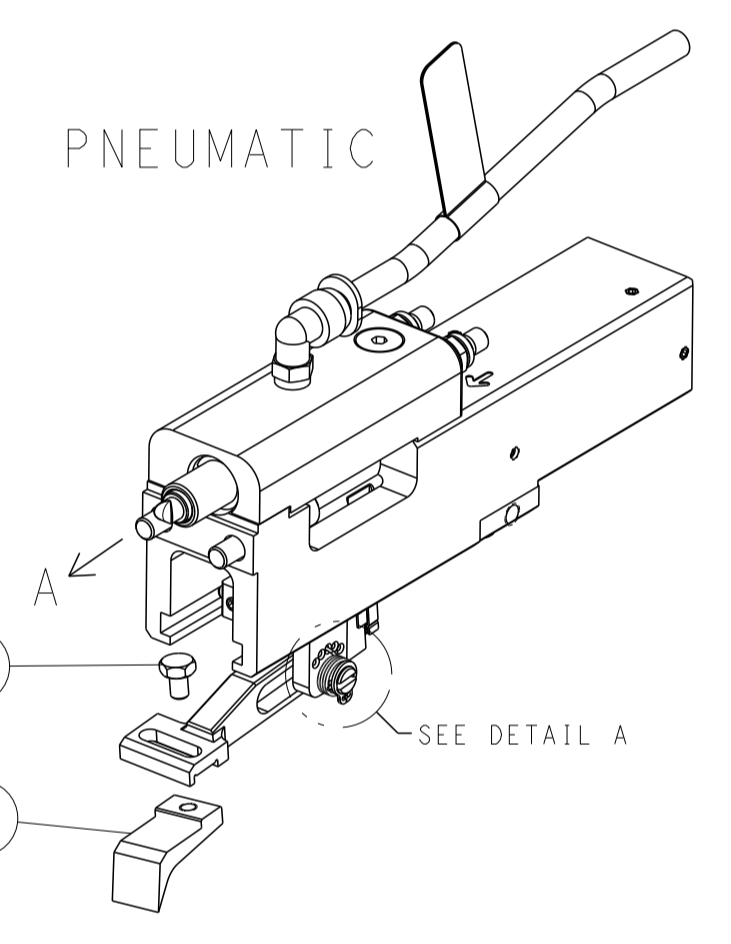
| LOC |    | DIST |     | REVISIONS   |      |     |      |
|-----|----|------|-----|-------------|------|-----|------|
| A   | 66 | P    | LTH | DESCRIPTION | DATE | DMN | APVD |
|     |    | -    |     | SEE SHEET 1 |      |     |      |



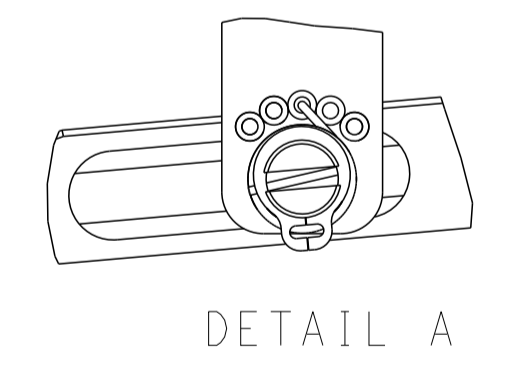
RAM AND HOLDDOWN SET-UP



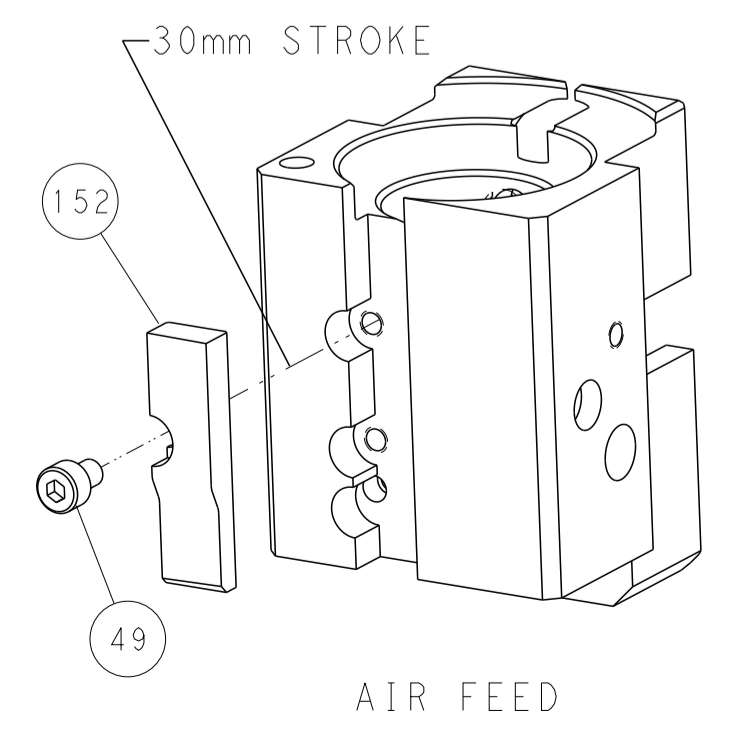
FEED TYPE



FEED SPRING SETTING POSITION



CAM POSITION



AIR FEED

PACIFIC VERSION  
 Shown on sheets 3 of 4 & 4 of 4  
 (Atlantic version shown on sheets 1 of 4 & 2 of 4)

|             |         |  |         |                           |         |                          |          |  |       |                                     |     |
|-------------|---------|--|---------|---------------------------|---------|--------------------------|----------|--|-------|-------------------------------------|-----|
| DIMENSIONS: |         | TOLERANCES UNLESS OTHERWISE SPECIFIED: |         | DWG: R. KNEPPER 02FEB2022 |         | CHK: G. BAILEY 02FEB2022 |          | APVD: G. BEAVER 02FEB2022              |       | NAME: OCEAN 2.0 End Feed Applicator |     |
| mm          | 0 PLC ± | 1 PLC ±                                | 2 PLC ± | 3 PLC ±                   | 4 PLC ± | ANGLES ±                 | FINISH ± | WEIGHT                                 | SCALE | SHEET                               | REV |
|             |         |  |         |                           |         |                          |          | 00779                                  | 1:1   | 4                                   | 4   |
| MATERIAL    |         |  |         |                           |         |                          |          | Customer Accessible Production Drawing |       | RESTRICTED TO                       |     |

