

| PART NUMBER | REVISION | DESCRIPTION | FEED TYPE |
|-------------|----------|----------------------------------|------------|
| 2837065-1 | C | FINE CRIMP HEIGHT ADJUST | MECHANICAL |
| 2837065-2 | C | FINE CRIMP HEIGHT ADJUST | PNEUMATIC |
| 7-2837065-1 | C | MECHANICAL AND CRIMP TOOLING KIT | MECHANICAL |
| 7-2837065-2 | C | PNEUMATIC AND CRIMP TOOLING KIT | PNEUMATIC |
| 7-2837065-7 | A | CRIMP TOOLING KIT | - |

ATLANTIC VERSION TERMINATOR INTERFACE ADAPTER



| APPLICATOR DATA | | |
|-----------------|----------------|------|
| CRIMP | SIZE | TYPE |
| WIRE | 2.44 mm [.096] | F |
| INSUL | 3.75 mm [.148] | O |

APPLICATOR INSTRUCTIONS
408-35042

| | |
|---|---|
| TERMINAL DATA: SUMITOMO TERMINAL SUMITOMO CRIMP SPECIFICATION | |
| TERMINAL NAME: TL SERIES SEALED TERMINAL | |
| WIRE STRIP LENGTH 4.34-5.10 mm [.171-.201 IN] | TERMINAL INSULATION DIAMETER RANGE Ø |
| TERMINAL APPLICATION SPECIFICATION 81001429 | |

| TERMINALS APPLIED | | | | SEAL INSULATION DIAMETER RANGE |
|-------------------|-------------------|-----------|---------------|--------------------------------|
| TE TERMINAL | SUMITOMO TERMINAL | TE SEAL | SUMITOMO SEAL | |
| 1949320-1 | 8100-1429 | 1949636-1 | 7165-0119 | Ø2.10-2.90 |
| | | 2025369-1 | 7165-0119 | Ø2.10-2.90 |

| WIRE SIZE | CRIMP HEIGHT mm [INCH] | CRIMP HEIGHT REFERENCE SETTING |
|--------------------------------|----------------------------|--------------------------------|
| 1.00mm ² | 1.15+/-0.05 [.045+/- .002] | 5.8 |
| 18 AWG or 0.85 mm ² | 1.10+/-0.05 [.043+/- .002] | 6.2 |
| 0.75mm ² | 1.10+/-0.05 [.043+/- .002] | 6.2 |

- 1 RECOMMENDED SPARE PARTS
- 2 REFER TO SUPPLIED INSTRUCTION SHEET FOR CLEANING, LUBRICATION AND STORAGE OF APPLICATOR.
- 3 APPLY PART NUMBER 2-23419-6 LOCTITE TO THREADS OF ITEM 242.
- 4 CRIMP HEIGHT REFERENCE SETTING WAS THE SETTING USED WHEN THE APPLICATOR WAS QUALIFIED AT THE FACTORY. ADJUSTMENT MAY BE NECESSARY WHEN RUNNING APPLICATOR IN THE FIELD.
- 5 APPLY TORO-SEAL IN ALLEN SOCKET TO FILL HOLE AFTER FLAT HD HAS BEEN ADJUSTED TO CORRECT HEIGHT AT QUALIFICATION. APPLY #1-23419-5 LOC-TITE TO THREADS.
- 6. UNLESS SPECIFIED OTHERWISE TORQUE VALUES SHALL BE USED PER DOCUMENT, 101-35000.

***WARNING**
ON INSTALLATION, SET WIRE DISC TO CRIMP HEIGHT REFERENCE SETTING FOR LARGEST WIRE SIZE. CRIMP HEIGHT REFERENCE SETTINGS GREATER THAN THE VALUE SHOWN MAY CAUSE DAMAGE TO THE CRIMP TOOLING, REFER TO THE INSTRUCTION SHEET FOR PROPER SETUP AND ADJUSTMENTS.

ATLANTIC VERSION
Shown on sheets 1 of 4 & 2 of 4
(Pacific version shown on sheets 3 of 4 & 4 of 4)

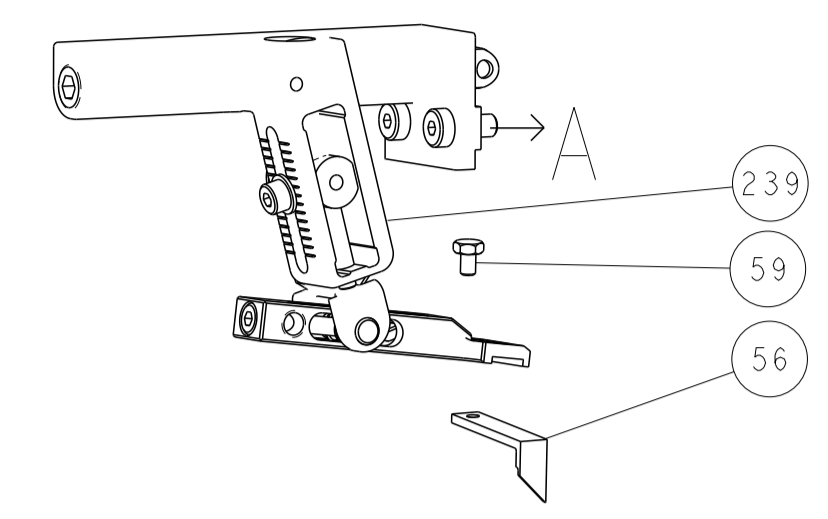
| LOC | DIST | REVISIONS | | | | | |
|-----|------|-----------|-----|---------------|-----------|-----|------|
| A | 66 | P | LTN | DESCRIPTION | DATE | OWN | APVD |
| | | 1 | | PRELIMINARY | 26APR2010 | CT | GB |
| | | A | | RELEASE | 26MAR2018 | AW | GB |
| | | B | | ECR-19-009446 | 17JUN2019 | FJ | TE |
| | | C | | ECR-19-010818 | 10JUL2019 | TB | GB |

| | | | | | | | |
|---|-----|-----|-----|-----|-------------|-------------------------------------|-----|
| - | 1 | - | 1 | - | 2119640-1 | PUSH ROD, AIR FEED | 250 |
| - | 1 | - | 1 | - | 1803259-1 | BUSHING, FLANGED | 249 |
| - | 1 | - | 1 | - | 2119641-1 | FEED CAM, AIR FEED | 248 |
| - | 1 | 1 | 1 | 1 | 2119082-3 | CAM, SNAIL, INSULATION ADJUSTMENT | 244 |
| - | 1 | 1 | 1 | 1 | 2079764-1 | WASHER, WAVE SPRING, CREST-TO-CREST | 243 |
| - | 1 | 1 | 1 | 1 | 2119083-1 | RETAINER, INSULATION DIAL | 242 |
| - | 1 | 1 | 1 | 1 | 7-18023-7 | SCR, SKT HD CAP M3 X 4.0 | 241 |
| - | - | 1 | - | 1 | 2119580-1 | MECHANICAL FEED ASSEMBLY | 239 |
| - | 1 | - | 1 | - | 2063440-1 | AIR FEED MODULE | 238 |
| - | 2 | - | 2 | - | 21045-3 | RING, RETAIN, EXTERN, 3/16 CRESCENT | 172 |
| - | REF | REF | REF | REF | 994970-2 | COUNTER, MAGNETIC | 164 |
| - | 1 | - | 1 | - | 240638-1 | SPRING, FEED FINGER | 163 |
| - | 1 | - | 1 | - | 3-23627-7 | PIN, RETAIN, GRVD, 3/16 X .854 | 137 |
| - | 1 | - | 1 | - | 2119799-1 | HOLDER, FEED FINGER, AF | 136 |
| - | 1 | 1 | 1 | 1 | 2844908-1 | SCREW, LOCKING | 99 |
| - | 1 | 1 | 1 | 1 | 2844907-1 | POST, LOCKING | 98 |
| - | 1 | 1 | 1 | 1 | 455888-6 | SPACER, CRIMPER | 82 |
| - | 1 | 1 | 1 | 1 | 1803607-1 | DOCUMENTATION PACKAGE | 71 |
| - | 1 | 1 | 1 | 1 | 2119740-1 | TAG, IDENTIFICATION | 67 |
| - | 2 | 2 | 2 | 2 | 2168078-1 | SCREW, DRIVE, RH, RoHS, 2 x .188 | 66 |
| - | 1 | 1 | 1 | 1 | 2168083-2 | SCR, SKT HD CAP, RoHS, M4 X 8.0 | 60 |
| - | 1 | 1 | 1 | 1 | 5-18022-5 | SCR, HEX HD CAP, M4 X 6.0 | 59 |
| - | 1 | 1 | 1 | 1 | 985575-3 | SCR, FLT SKT HD CAP M3 X 10.0 | 57 |
| - | 1 | 1 | 1 | 1 | 1338683-8 | FEED PAWL | 56 |
| - | 4 | 4 | 4 | 4 | 2168083-3 | SCR, SKT HD CAP, RoHS, M4 X 12.0 | 54 |
| - | 2 | 2 | 2 | 2 | 2168083-3 | SCR, SKT HD CAP, RoHS, M4 X 12.0 | 53 |
| - | 1 | 1 | 1 | 1 | 1803382-6 | HOLD DOWN, SPRING LOADED | 50 |
| - | 1 | 2 | 1 | 2 | 18023-9 | SCR, SKT HD CAP M4 X 6.0 | 49 |
| - | - | 1 | - | 1 | 2119652-1 | FEED CAM, PRE FEED | 48 |
| - | - | 1 | - | 1 | 2119653-1 | FEED CAM, POST FEED | 47 |
| - | 1 | 1 | 1 | 1 | 1803583-9 | APPLICATOR BASIC ASSEMBLY, SF | 46 |
| - | 1 | 1 | 1 | 1 | 1803515-1 | RAM ASSEMBLY, SF ATLANTIC | 44 |
| - | 1 | 1 | 1 | 1 | 1803602-1 | SCR, BHSC, RoHS (M8 X 25) | 41 |
| - | 1 | 1 | 1 | 1 | 1752356-1 | SUPPORT, TERMINAL | 34 |
| - | 2 | 2 | 2 | 2 | 2079383-5 | SCR, BHSC, RoHS (M4 X 20) | 33 |
| - | 2 | 2 | 2 | 2 | 2-2844962-8 | SPACER, CYLINDRICAL, STRIP GUIDE | 30 |
| - | 1 | 1 | 1 | 1 | 2844992-1 | ASSEMBLY, STRIP GUIDE | 29 |
| - | 1 | 1 | 1 | 1 | 455888-3 | SPACER, CRIMPER | 28 |
| - | 1 | 1 | 1 | 1 | 1320928-2 | STRIP GUIDE | 24 |
| - | 1 | 1 | 1 | 1 | 2168083-2 | SCR, SKT HD CAP, RoHS, M4 X 8.0 | 21 |
| - | 2 | 2 | 2 | 2 | 1-18028-2 | WASHER, FLAT, REG M4 | 20 |
| - | 1 | 1 | 1 | 1 | 2119533-1 | STRIPPER, SIDE FEED | 19 |
| - | 1 | 1 | 1 | 1 | 2119806-1 | INSERT, SHEAR | 13 |
| - | 1 | 1 | 1 | 1 | 3-22280-3 | SPRING, COMPRESSION | 12 |
| - | 1 | 1 | 1 | 1 | 1-356885-5 | STOP, SHEAR | 11 |
| - | 1 | 1 | 1 | 1 | 2119805-1 | SHEAR HOLDER, FRONT | 10 |
| - | 1 | 1 | 1 | 1 | 318707-1 | FLOATING SHEAR, FRONT | 9 |
| - | 1 | 2 | 2 | 1 | 1803512-3 | ANVIL, COMBINATION | 8 |
| - | 1 | 1 | 1 | 1 | 3-240641-7 | SPACER | 7 |
| - | - | - | - | - | - | - | 6 |
| - | 1 | 1 | 1 | 1 | 2119781-1 | DEPRESSOR, SHEAR | 5 |
| - | 1 | 1 | 1 | 1 | 238011-9 | BLOCK, CRIMPER SPACER | 4 |
| - | 1 | 2 | 2 | 1 | 9-1633966-4 | CRIMPER, INSULATION O | 3 |
| - | 1 | 1 | 1 | 1 | 455888-8 | SPACER, CRIMPER | 2 |
| - | 1 | 2 | 2 | 1 | 1-1803470-9 | CRIMPER, WIRE F | 1 |

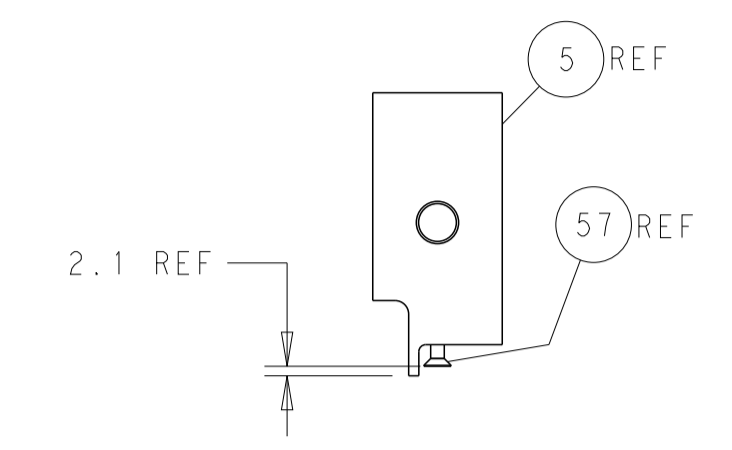
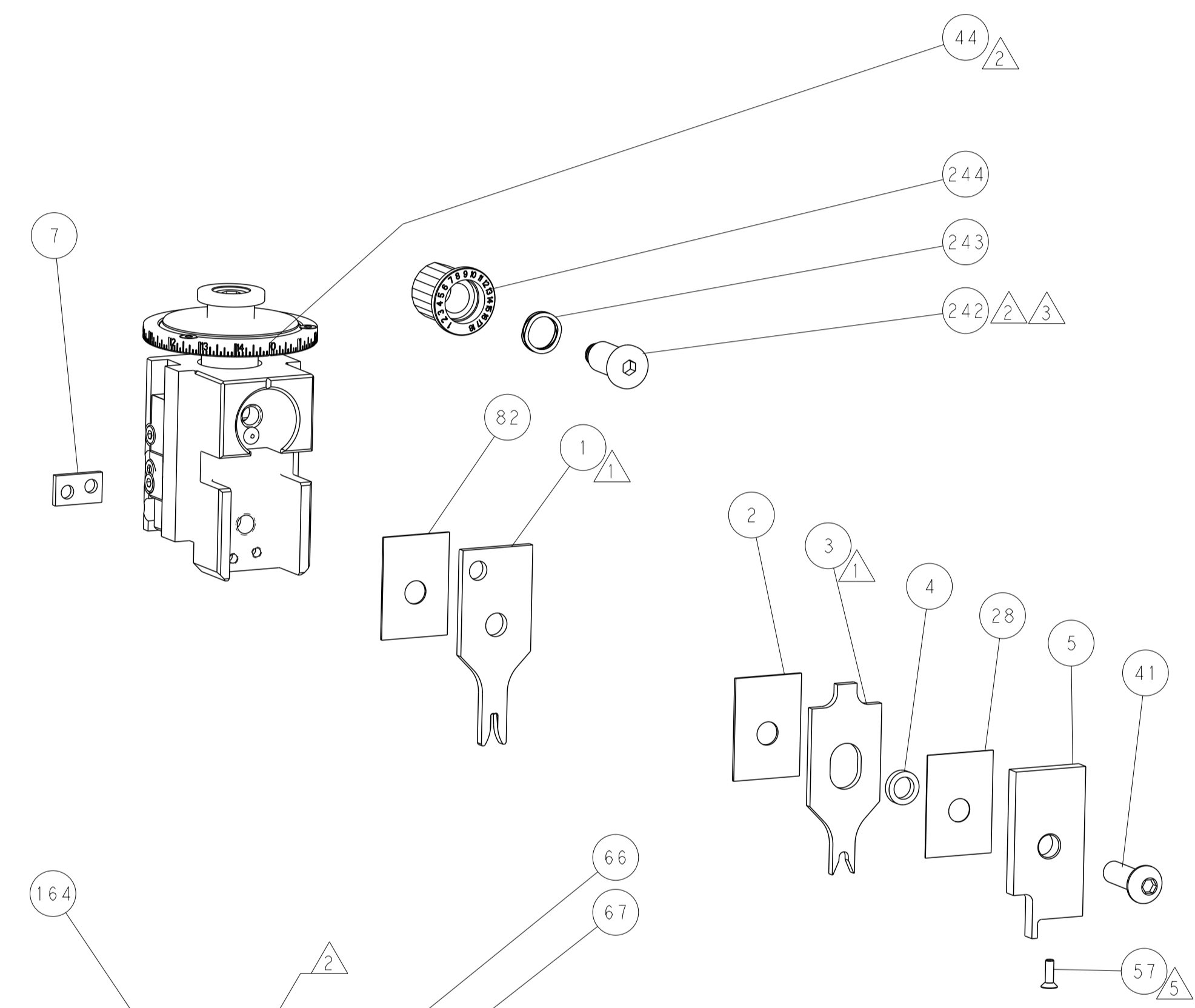
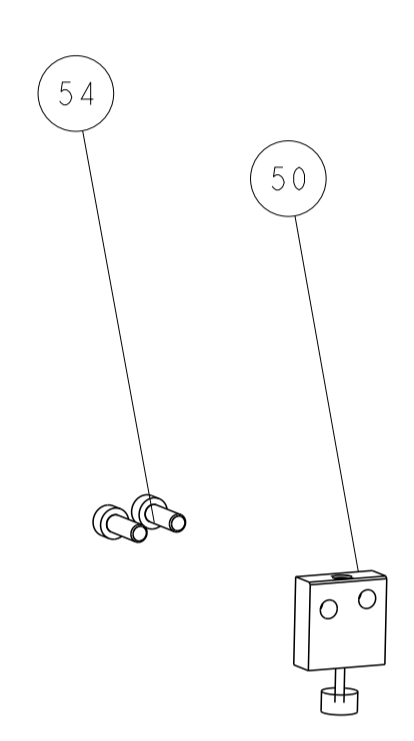
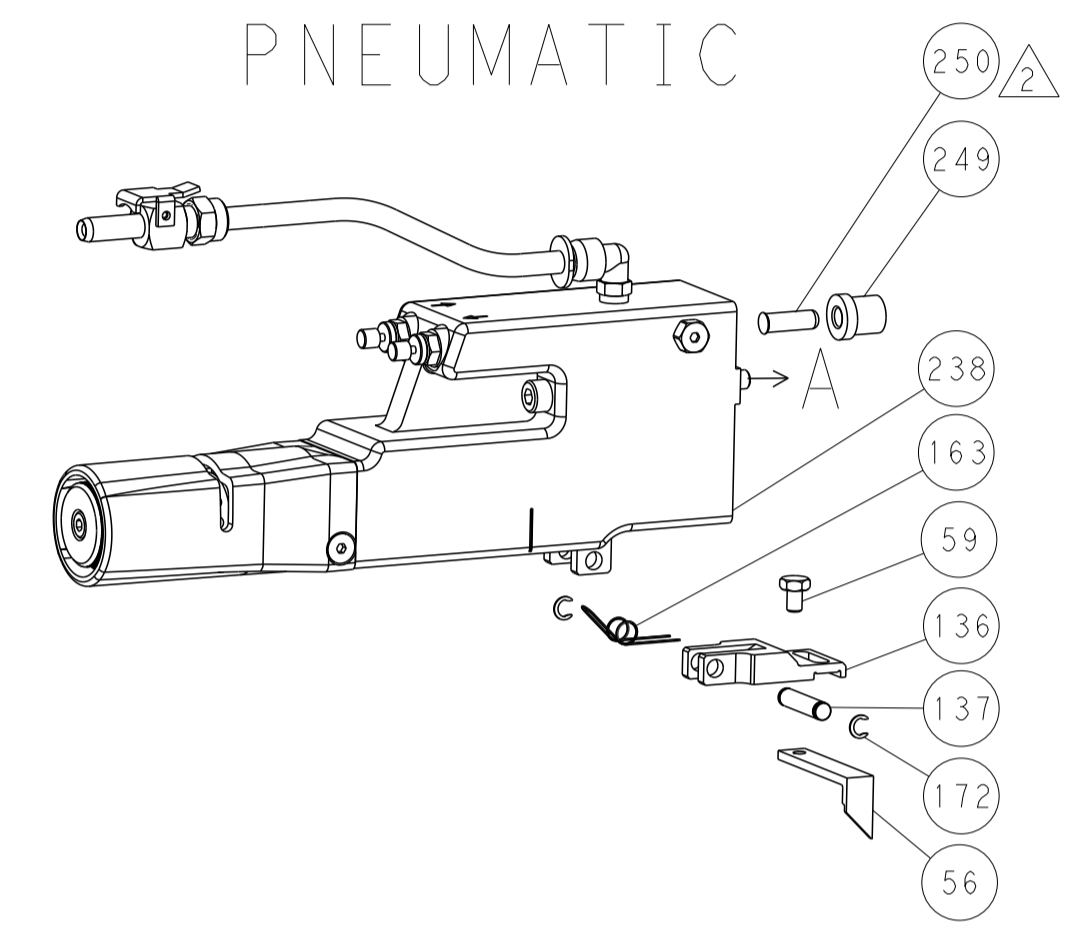
| DIMENSIONS: | | TOLERANCES UNLESS OTHERWISE SPECIFIED: | | OWN | CHK | APVD | DATE | NAME | SIZE | CAGE CODE | DRAWING NO | RESTRICTED TO |
|-------------|---------|--|----------|-----------|-----------|-------------|-----------|--|------|-----------|--------------|---------------|
| mm | 0 PLC ± | 1 PLC ± | 2 PLC ± | C. TOPPER | G. BAILEY | J. DEGRANGE | 27FEB2018 | Ocean Side Feed Applicator | A1 | 00779 | 2837065 | - |
| | 3 PLC ± | 4 PLC ± | ANGLES ± | MATERIAL | | WEIGHT | | Customer Accessible Production Drawing | | SCALE | SHEET 1 OF 4 | REV C |

| LOC | | DIST | | REVISIONS | | | | | |
|-----|--|------|--|-----------|-----|-------------|------|-----|------|
| A | | 66 | | P | LTN | DESCRIPTION | DATE | DWN | APVD |
| | | | | - | - | SEE SHEET 1 | - | - | - |

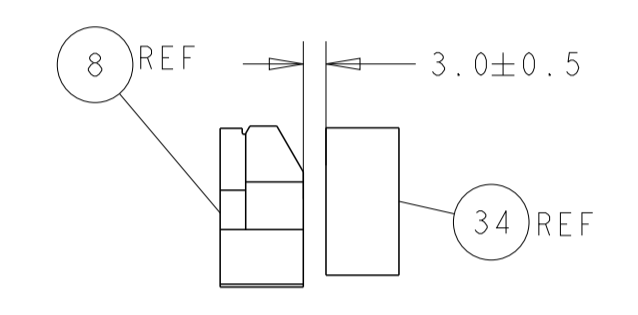
FEED TYPE MECHANICAL



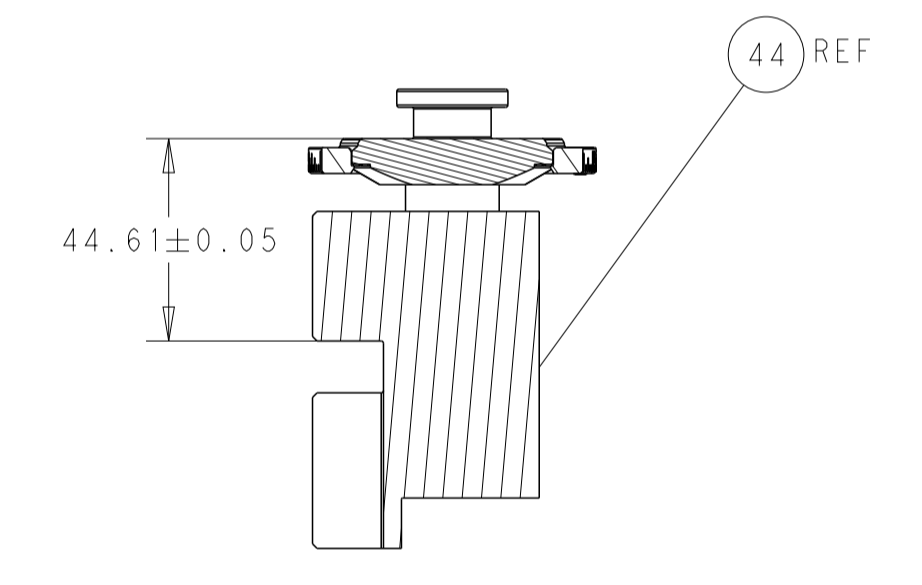
PNEUMATIC



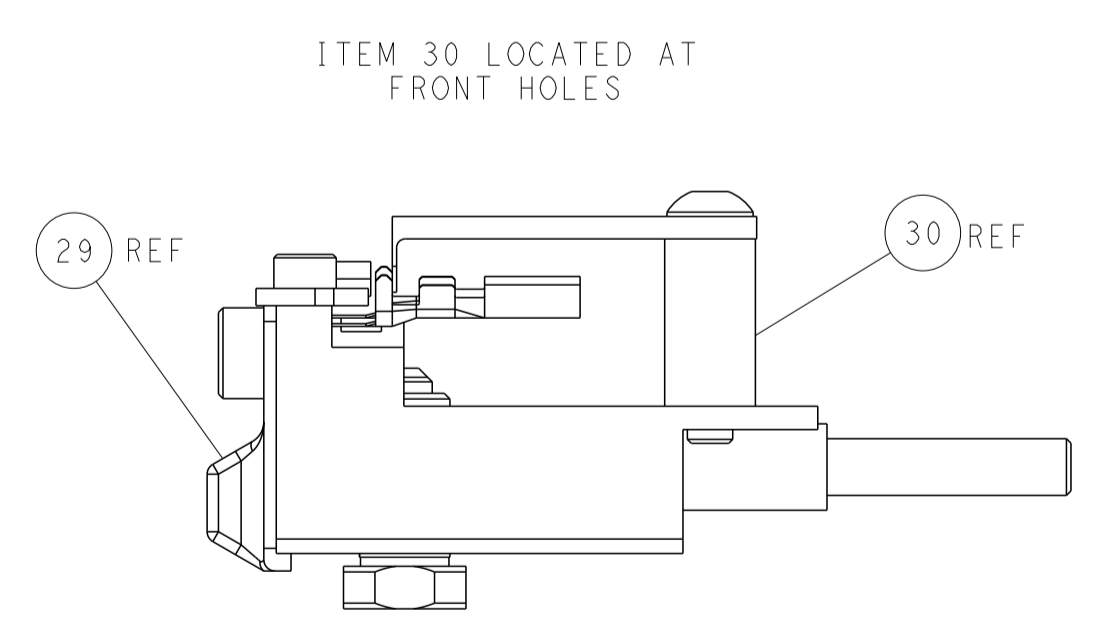
SHEAR DEPRESSOR DETAIL



TERMINAL SUPPORT LOCATION

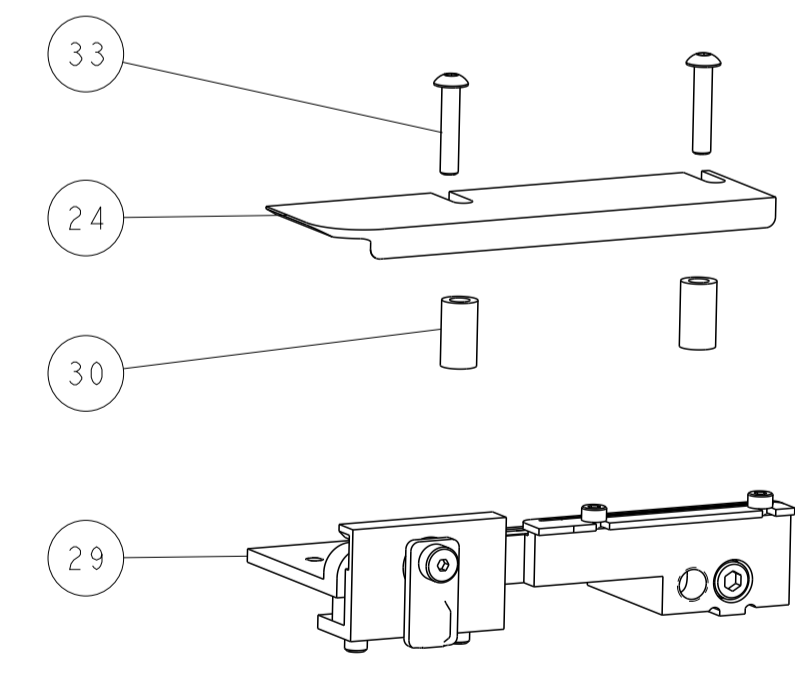
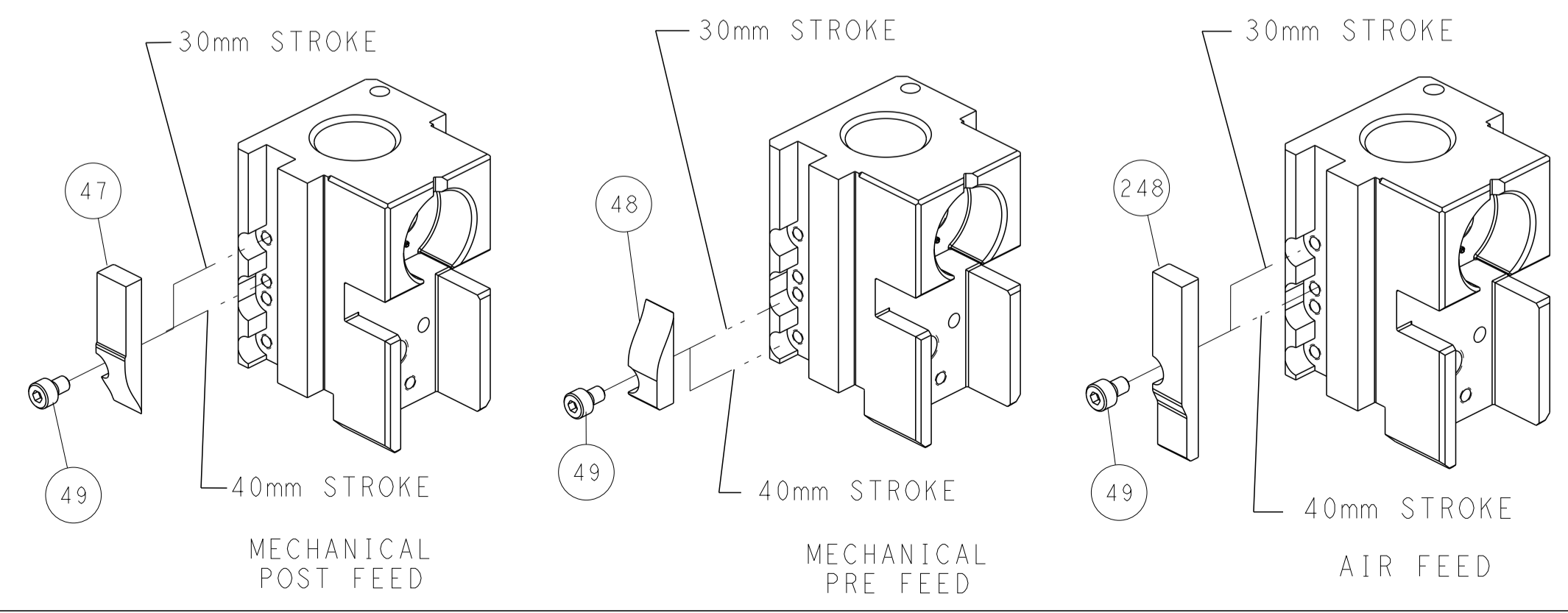


RAM SET-UP



FEED TRACK POSITION GUIDE BY INSULATION BARREL

CAM POSITIONS



ATLANTIC VERSION
 Shown on sheets 1 of 4 & 2 of 4
 (Pacific version shown on sheets 3 of 4 & 4 of 4)

| | | | |
|---|--|--|--|
| <small>THIS DRAWING IS UNPUBLISHED. RELEASED FOR PUBLICATION BY TYCO ELECTRONICS CORPORATION. ALL RIGHTS RESERVED.</small> | | DWN: C. TOPPER 27FEB2018 CHK: G. BAILEY 27FEB2018 APVD: DEGRANGE 27FEB2018 | TE Connectivity Harrisburg, PA 17105-3608 |
| DIMENSIONS: mm TOLERANCES UNLESS OTHERWISE SPECIFIED: 0 PLC ± 1 PLC ± 2 PLC ± 3 PLC ± 4 PLC ± ANGLES ± MATERIAL: - FINISH: - | | NAME: Ocean Side Feed Applicator SIZE: A1 CAGE CODE: 00779 DRAWING NO: C=2837065 SCALE: 1:2 SHEET: 2 OF 4 REV: C | RESTRICTED TO: - |
| CUSTOMER ACCESSIBLE PRODUCTION DRAWING | | SHEETS 3 & 4 ARE NOT REQUIRED FOR ATLANTIC VERSION | |

| PART NUMBER | REVISION | DESCRIPTION | FEED TYPE |
|-------------|----------|--------------------------|------------|
| 2-2837065-1 | C | FINE CRIMP HEIGHT ADJUST | MECHANICAL |
| 2-2837065-2 | C | FINE CRIMP HEIGHT ADJUST | PNEUMATIC |
| 7-2837065-7 | A | CRIMP TOOLING KIT | - |

PACIFIC VERSION TERMINATOR
INTERFACE ADAPTER



| APPLICATOR DATA | | |
|-----------------|----------------|------|
| CRIMP | SIZE | TYPE |
| WIRE | 2.44 mm [.096] | F |
| INSUL | 3.75 mm [.148] | O |

APPLICATOR INSTRUCTIONS
408-35042

| | |
|---|---|
| TERMINAL DATA: SUMITOMO TERMINASUMITOMO CRIMP SPECIFICATION | |
| TERMINAL NAME: TL SERIES SEALED TERMINAL | |
| WIRE STRIP LENGTH 4.34-5.10 mm [1.71-.201 IN] | TERMINAL INSULATION DIAMETER RANGE Ø |
| TERMINAL APPLICATION SPECIFICATION 81001429 | - |

| TE TERMINAL | SUMITOMO TERMINAL | TE SEAL | SUMITOMO SEAL | SEAL INSULATION DIAMETER RANGE |
|-------------|-------------------|-----------|---------------|--------------------------------|
| 1949320-1 | 8100-1429 | 1949636-1 | 7165-0119 | Ø2.10-2.90 |
| | | 2025369-1 | 7165-0119 | Ø2.10-2.90 |

| WIRE SIZE | CRIMP HEIGHT mm [INCH] | CRIMP HEIGHT REFERENCE SETTING |
|--------------------------------|-----------------------------|--------------------------------|
| 1.00mm ² | 1.15+/-0.05 [1.045+/-0.002] | 5.8 |
| 18 AWG or 0.85 mm ² | 1.10+/-0.05 [1.043+/-0.002] | 6.2 |
| 0.75mm ² | 1.10+/-0.05 [1.043+/-0.002] | 6.2 |

- 1 RECOMMENDED SPARE PARTS
- 2 REFER TO SUPPLIED INSTRUCTION SHEET FOR CLEANING, LUBRICATION AND STORAGE OF APPLICATOR.
- 3 APPLY PART NUMBER 2-23419-6 LOCTITE TO THREADS OF ITEM 242.
- 4 CRIMP HEIGHT REFERENCE SETTING WAS THE SETTING USED WHEN THE APPLICATOR WAS QUALIFIED AT THE FACTORY. ADJUSTMENT MAY BE NECESSARY WHEN RUNNING APPLICATOR IN THE FIELD.
- 5 APPLY TORQ-SEAL IN ALLEN SOCKET TO FILL HOLE AFTER FLAT HD HAS BEEN ADJUSTED TO CORRECT HEIGHT AT QUALIFICATION. APPLY #1-23419-5 LOC-TITE TO THREADS.
- 6. UNLESS SPECIFIED OTHERWISE TORQUE VALUES SHALL BE USED PER DOCUMENT, 101-35000.

***WARNING**
ON INSTALLATION, SET WIRE DISC TO CRIMP HEIGHT REFERENCE SETTING FOR LARGEST WIRE SIZE. CRIMP HEIGHT REFERENCE SETTINGS GREATER THAN THE VALUE SHOWN MAY CAUSE DAMAGE TO THE CRIMP TOOLING, REFER TO THE INSTRUCTION SHEET FOR PROPER SETUP AND ADJUSTMENTS.

PACIFIC VERSION
Shown on sheets 3 of 4 & 4 of 4
(Atlantic version shown on sheets 1 of 4 & 2 of 4)

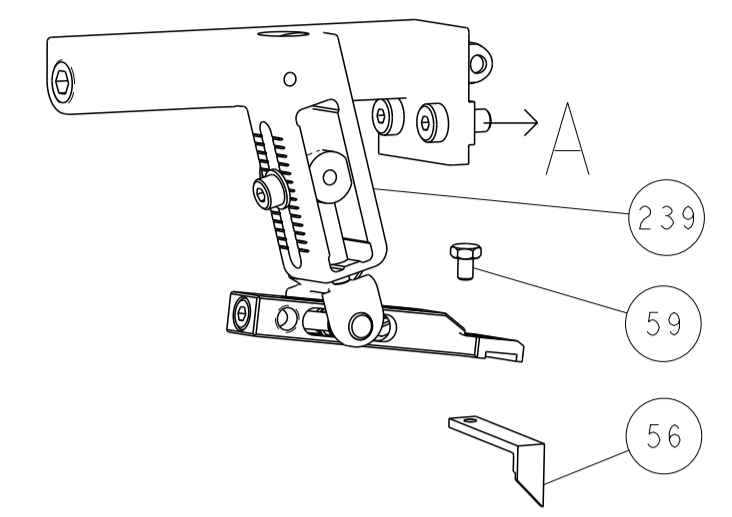
| LOC | DIST | REV | DATE | BY | APPV |
|-----|------|-----|------|----|------|
| A | 66 | - | - | - | - |

| REV | DATE | BY | APPV | DESCRIPTION | ITEM NO |
|-----|------|-----|------|---|---------|
| - | 1 | - | - | 2119640-1 PUSH ROD, AIR FEED | 250 |
| - | 1 | - | - | 1803259-1 BUSHING, FLANGED | 249 |
| - | 1 | 1 | - | 2119082-3 CAM, SNAIL, INSULATION ADJUSTMENT | 244 |
| - | 1 | 1 | - | 2079764-1 WASHER, WAVE SPRING, CREST-TO-CREST | 243 |
| - | 1 | 1 | - | 2119083-1 RETAINER, INSULATION DIAL | 242 |
| - | 1 | 1 | - | 7-18023-7 SCR, SKT HD CAP M3 X 4.0 | 241 |
| - | - | 1 | - | 2119580-1 MECHANICAL FEED ASSEMBLY | 239 |
| - | 1 | - | - | 2063440-1 AIR FEED MODULE | 238 |
| - | 2 | - | - | 21045-3 RING, RETAIN, EXTERN, 3/16 CRESCENT | 172 |
| - | REF | REF | - | 994970-2 COUNTER, MAGNETIC | 164 |
| - | 1 | - | - | 240638-1 SPRING, FEED FINGER | 163 |
| - | 1 | - | - | 2119641-2 FEED CAM, AIR FEED | 151 |
| - | 1 | 1 | - | 2168083-8 SCR, SKT HD CAP, RoHS, M4 X 16 | 144 |
| - | 4 | 4 | - | 2168083-9 SCR, SKT HD CAP, RoHS, M4 X 20 | 143 |
| - | - | 1 | - | 2119653-2 FEED CAM, POST FEED | 142 |
| - | 1 | 1 | - | 1-1803583-0 APPLICATOR BASIC ASSEMBLY, SF | 141 |
| - | 1 | 1 | - | 1803516-1 RAM ASSEMBLY, SF PACIFIC | 140 |
| - | 1 | - | - | 3-23627-7 PIN, RETAIN, GRVD, 3/16 X .854 | 137 |
| - | 1 | - | - | 2119799-1 HOLDER, FEED FINGER, AF | 136 |
| - | 1 | 1 | - | 2844908-1 SCREW, LOCKING | 99 |
| - | 1 | 1 | - | 2844907-1 POST, LOCKING | 98 |
| - | 1 | 1 | - | 455888-6 SPACER, CRIMPER | 82 |
| - | 1 | 1 | - | 1803607-1 DOCUMENTATION PACKAGE | 71 |
| - | 1 | 1 | - | 2119740-1 TAG, IDENTIFICATION | 67 |
| - | 2 | 2 | - | 2168078-1 SCREW, DRIVE, RH, RoHS, 2 x .188 | 66 |
| - | 1 | 1 | - | 5-18022-5 SCR, HEX HD CAP, M4 X 6.0 | 59 |
| - | 1 | 1 | - | 985575-3 SCR, FLT SKT HD CAP M3 X 10.0 | 57 |
| - | 1 | 1 | - | 1338683-8 FEED PAWL | 56 |
| - | 2 | 2 | - | 2168083-3 SCR, SKT HD CAP, RoHS, M4 X 12.0 | 53 |
| - | 1 | 1 | - | 1803382-6 HOLD DOWN, SPRING LOADED | 50 |
| - | 1 | 2 | - | 18023-9 SCR, SKT HD CAP M4 X 6.0 | 49 |
| - | - | 1 | - | 2119652-1 FEED CAM, PRE FEED | 48 |
| - | 1 | 1 | - | 1803602-1 SCR, BHSC, RoHS (M8 X 25) | 41 |
| - | 1 | 1 | - | 1752356-1 SUPPORT, TERMINAL | 34 |
| - | 2 | 2 | - | 2079383-5 SCR, BHSC, RoHS (M4 X 20) | 33 |
| - | 2 | 2 | - | 2-2844962-8 SPACER, CYLINDRICAL, STRIP GUIDE | 30 |
| - | 1 | 1 | - | 2844992-1 ASSEMBLY, STRIP GUIDE | 29 |
| - | 1 | 1 | - | 455888-3 SPACER, CRIMPER | 28 |
| - | 1 | 1 | - | 1320928-2 STRIP GUIDE | 24 |
| - | 1 | 1 | - | 2168083-2 SCR, SKT HD CAP, RoHS, M4 X 8.0 | 21 |
| - | 2 | 2 | - | 1-18028-2 WASHER, FLAT, REG M4 | 20 |
| - | 1 | 1 | - | 2119533-1 STRIPPER, SIDE FEED | 19 |
| - | 1 | 1 | - | 2119806-1 INSERT, SHEAR | 13 |
| - | 1 | 1 | - | 3-22280-3 SPRING, COMPRESSION | 12 |
| - | 1 | 1 | - | 1-356885-5 STOP, SHEAR | 11 |
| - | 1 | 1 | - | 2119805-1 SHEAR HOLDER, FRONT | 10 |
| - | 1 | 1 | - | 318707-1 FLOATING SHEAR, FRONT | 9 |
| - | 1 | 1 | - | 1803512-3 ANVIL, COMBINATION | 8 |
| - | 1 | 1 | - | 3-240641-7 SPACER | 7 |
| - | - | - | - | - | 6 |
| - | 1 | 1 | - | 2119781-1 DEPRESSOR, SHEAR | 5 |
| - | 1 | 1 | - | 238011-9 BLOCK, CRIMPER SPACER | 4 |
| - | 1 | 1 | - | 9-1633966-4 CRIMPER, INSULATION O | 3 |
| - | 1 | 1 | - | 455888-8 SPACER, CRIMPER | 2 |
| - | 1 | 1 | - | 1-1803470-9 CRIMPER, WIRE F | 1 |

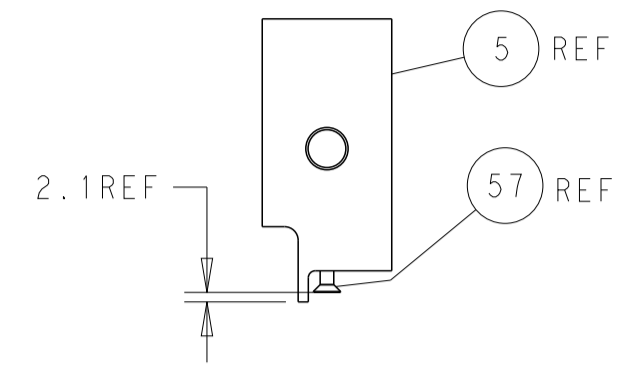
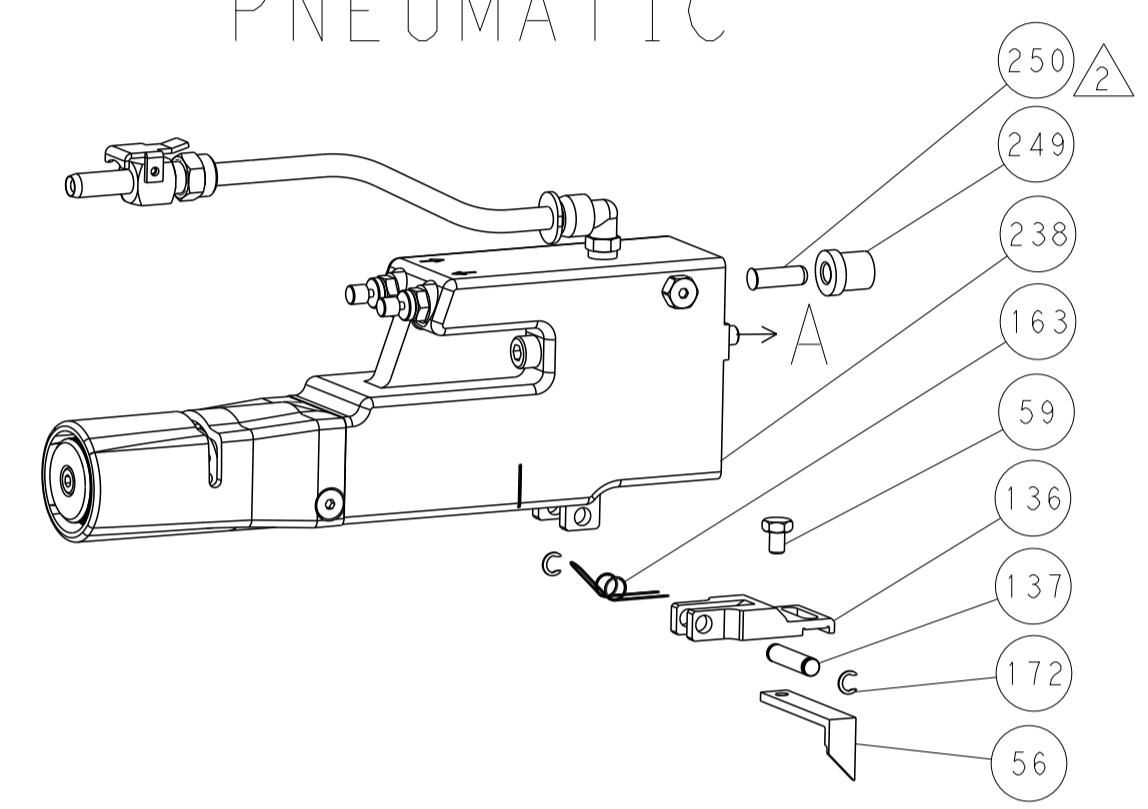
| | | | | | | | | | | | |
|----------------|--|--|--|-------------------|--|-------------|--|---|--|------------|--|
| DIMENSIONS: mm | | TOLERANCES UNLESS OTHERWISE SPECIFIED: | | DRAWING NO: 00779 | | SCALE: 1:2 | | SHEET 3 OF 4 | | REV C | |
| MATERIAL: - | | FINISH: - | | WEIGHT: - | | PART NO: A1 | | DESCRIPTION: Ocean Side Feed Applicator | | ITEM NO: - | |

| LOC | DIST | REVISIONS | | | | | |
|-----|------|-----------|-----|-------------|------|-----|------|
| A | 66 | P | LTN | DESCRIPTION | DATE | DWN | APVD |
| | | - | | SEE SHEET 1 | | | |

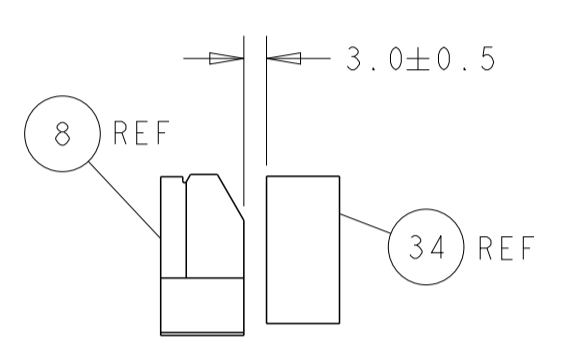
FEED TYPE MECHANICAL



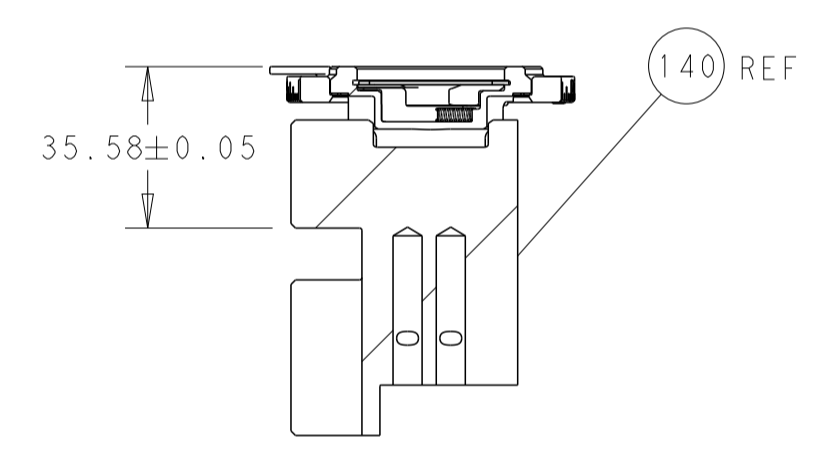
PNEUMATIC



SHEAR DEPRESSOR DETAIL

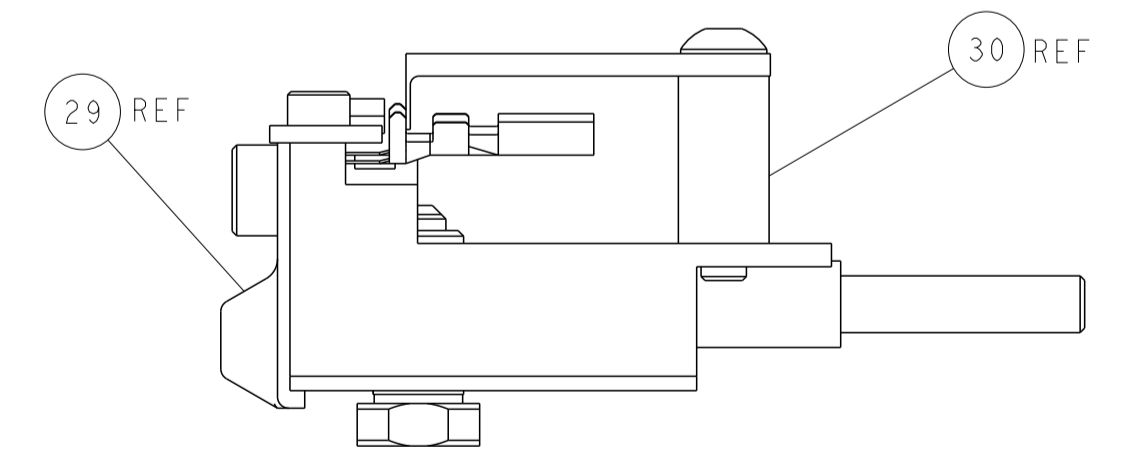


TERMINAL SUPPORT LOCATION



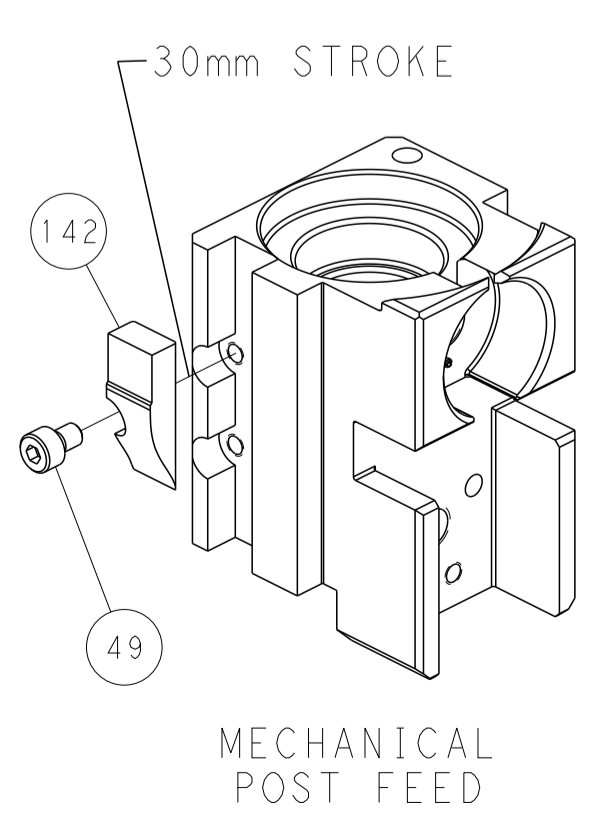
RAM SET-UP

ITEM 30 LOCATED AT
FRONT HOLES

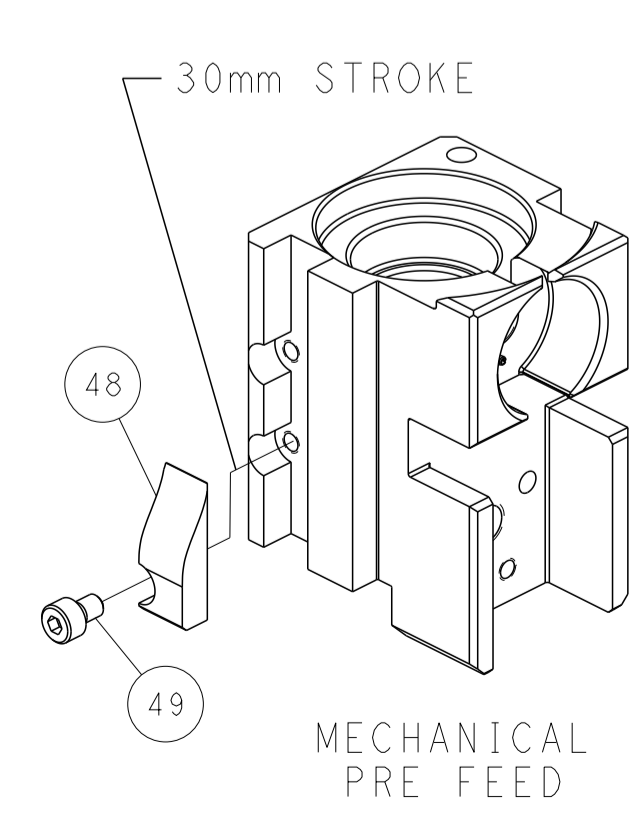


FEED TRACK POSITION
GUIDE BY INSULATION BARREL

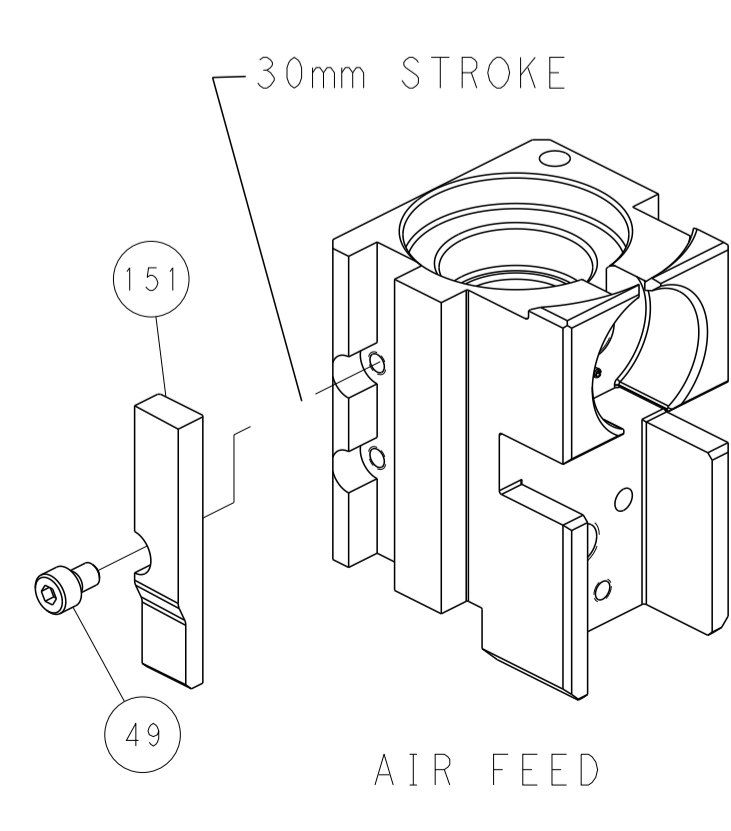
CAM POSITIONS



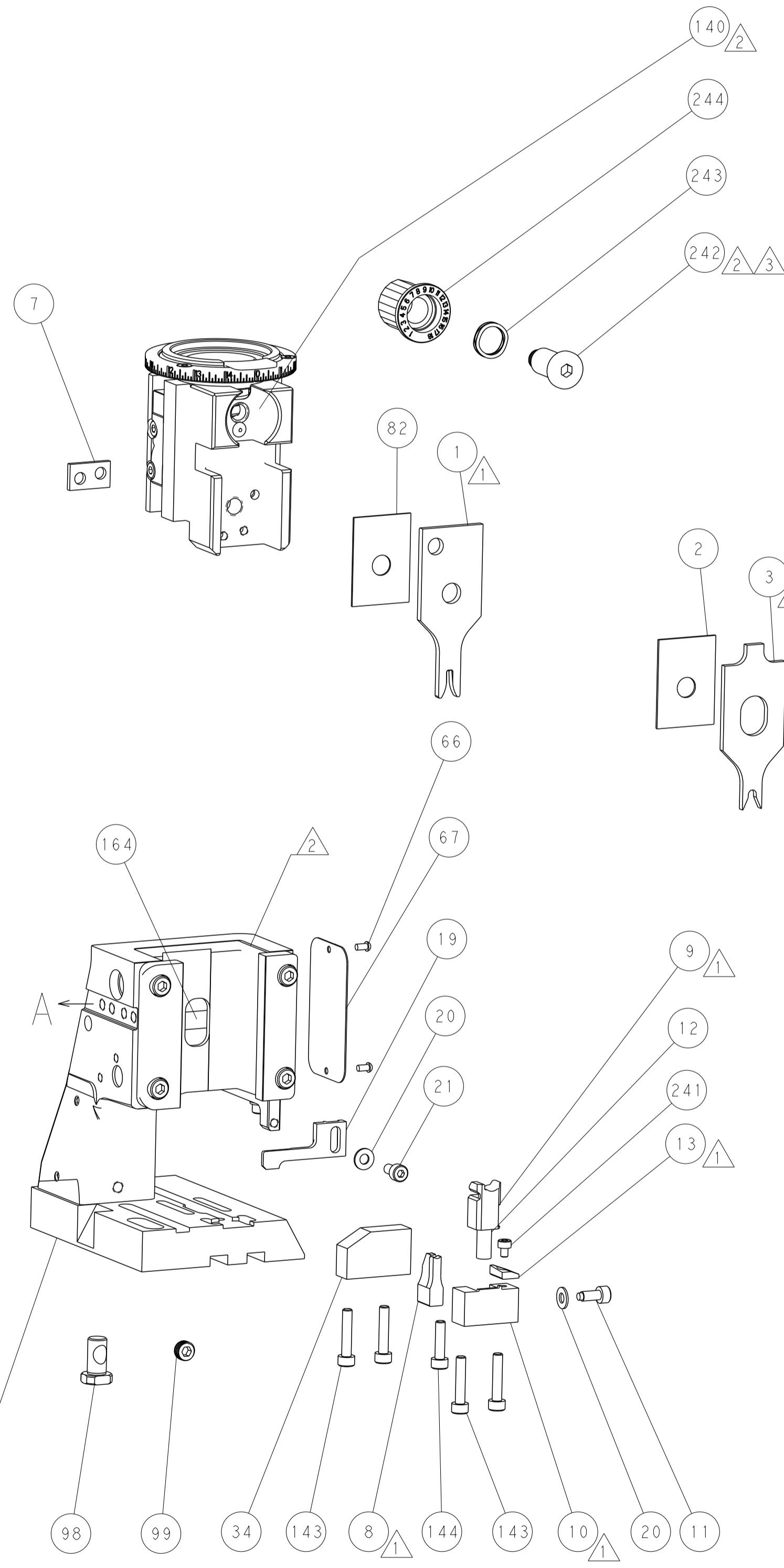
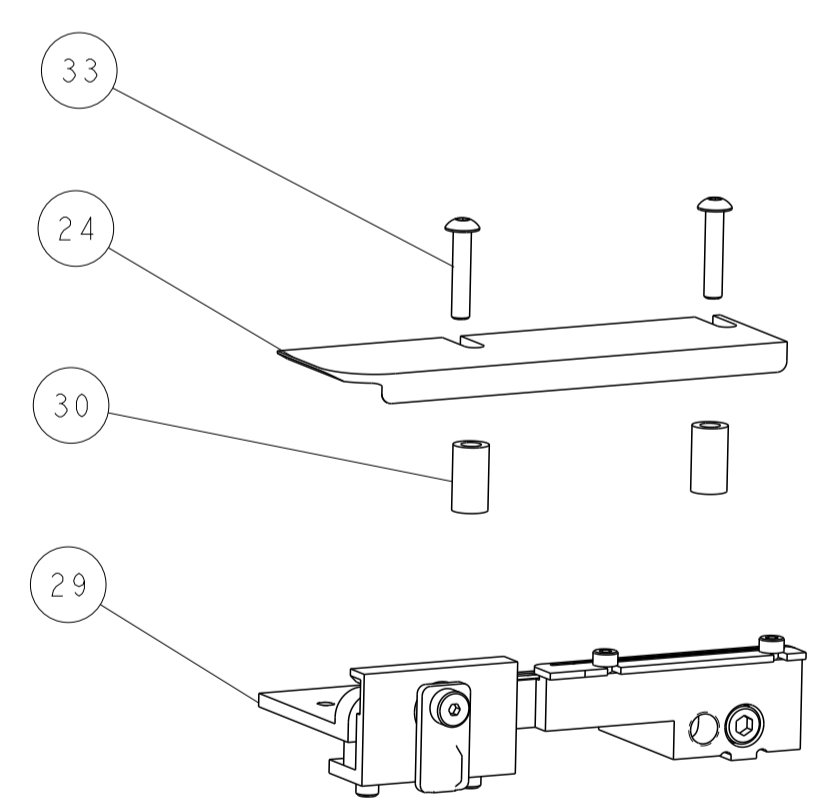
MECHANICAL
POST FEED



MECHANICAL
PRE FEED



AIR FEED



PACIFIC VERSION
 Shown on sheets 3 of 4 & 4 of 4
 (Atlantic version shown on sheets 1 of 4 & 2 of 4)

| | | | |
|---|--|---|---|
| <small>THIS DRAWING IS UNPUBLISHED. RELEASED FOR PUBLICATION. IT IS THE PROPERTY OF TYCO ELECTRONICS CORPORATION. IT IS TO BE USED ONLY FOR THE PROJECT AND INSTANTIATION ORGANIZATION FOR WHICH IT WAS PREPARED. IT IS NOT TO BE REPRODUCED OR TRANSMITTED IN ANY FORM OR BY ANY MEANS, ELECTRONIC OR MECHANICAL, INCLUDING PHOTOCOPYING, RECORDING, OR BY ANY INFORMATION STORAGE AND RETRIEVAL SYSTEM, WITHOUT THE WRITTEN PERMISSION OF TYCO ELECTRONICS CORPORATION.</small> | | DWN C. TOPPER 27FEB2018 CHK G. BAILEY 27FEB2018 APVD J. DEGRANGE 27FEB2018 PRODUCT SPEC APPLICATION SPEC | NAME Ocean Side Feed Applicator |
| DIMENSIONS: mm | TOLERANCES UNLESS OTHERWISE SPECIFIED: 0 PLC ± 1 PLC ± 2 PLC ± 3 PLC ± 4 PLC ± ANGLES ± FINISH | SIZE A1 CAGE CODE 00779 DRAWING NO C-2837065 | RESTRICTED TO Customer Accessible Production Drawing SCALE 1:2 SHEET 4 OF 4 REV C |