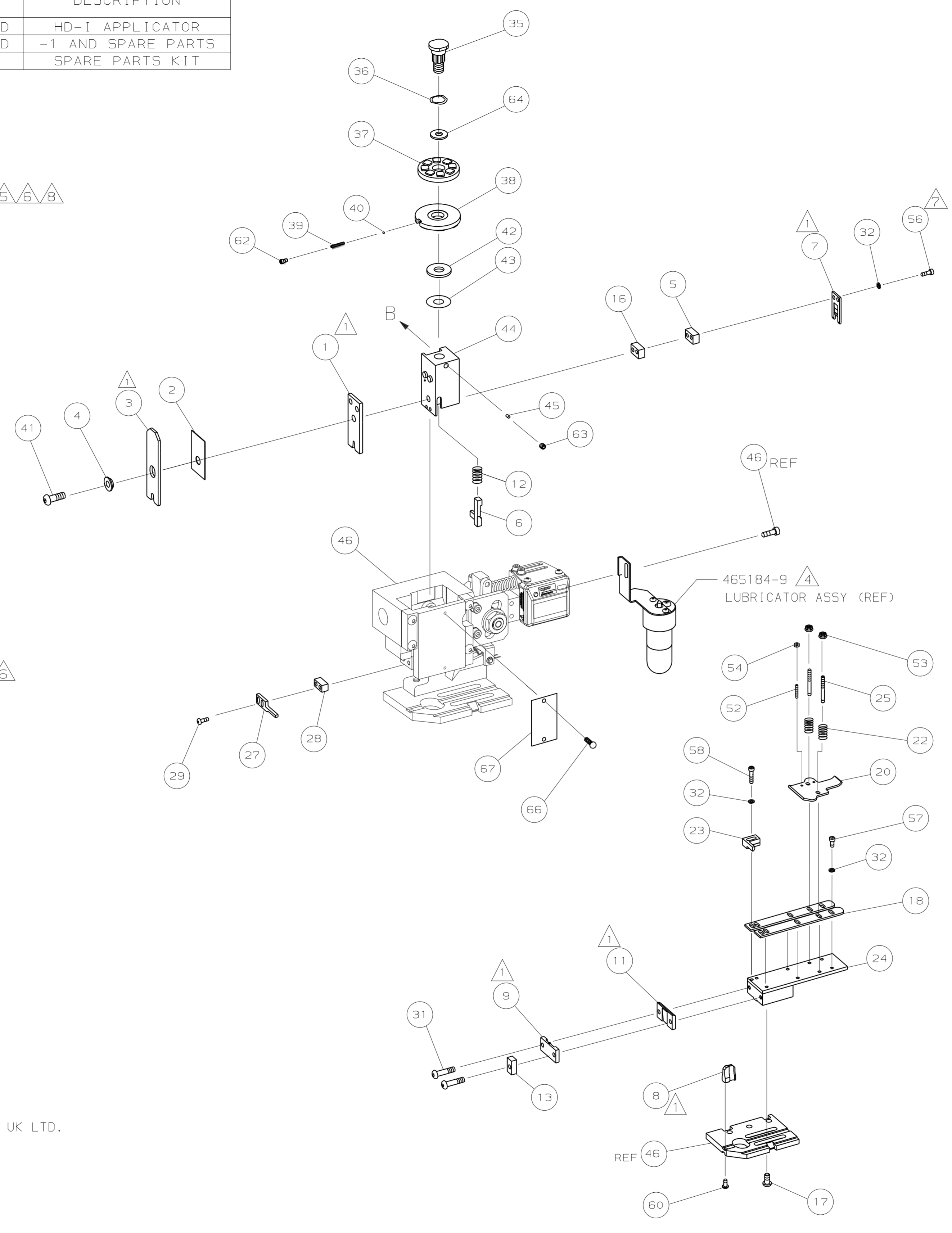


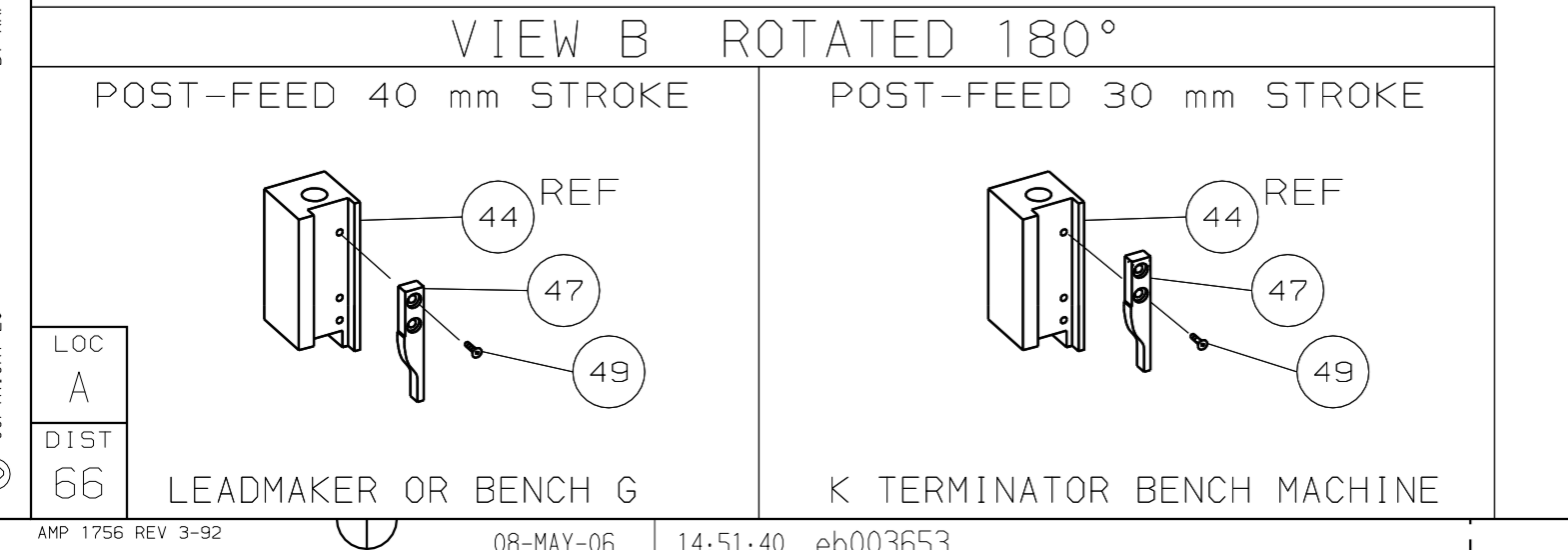
PART NUMBER	REV	FIRST USED	TERMINATOR	FEED TYPE	DESCRIPTION
1339803-1	A		- BENCH & LEADMAKER	MECH POST FEED	HD-I APPLICATOR
7-1339803-1	A		- BENCH & LEADMAKER	MECH POST FEED	-1 AND SPARE PARTS
7-1339803-7	A		-	-	SPARE PARTS KIT

CRIMP DATA SUMITOMO TERMINAL SUMITOMO CRIMP SPECS			
TERMINAL NAME: .305 SERIES FASTON TYPE RECEPTACLE			
CRIMP	SIZE	TYPE	RANGE
WIRE	3.30 [1.130 IN]	F	0.50mm ² -2.00mm ²
INSUL	4.32 [1.170 IN]	F	2.40-3.10 [1.094-.122 IN]
WIRE STRIP LENGTH		APPL INSTRUCTION	
4.50-5.50 [1.177-.217 IN]		408-8323	
TERMINAL APPL SPEC		FEED	
SUMITOMO INSTRUCTION MANUAL NO. T-029		26.40 [1.039 IN]	
TERMINALS APPLIED			
AMP PN	MFR PN		
1572997-1	8242-4050	-	-
1572997-2	8242-4142	-	-
-	-	-	-
-	-	-	-
-	-	-	-
-	-	-	-
-	-	-	-
WIRE SIZE	CRIMP HEIGHT	PIN PN AND LENGTH [IN]	
mm ² AWG			
2.00mm ²	1.60 ±0.05 [0.063 ±0.002 IN]	1-354779-0 [1.3040]	
1.50mm ²	1.55 ±0.05 [0.061 ±0.002 IN]	1-354779-6 [1.3070]	
1.25mm ²	1.50 ±0.05 [0.059 ±0.002 IN]	2-354779-2 [1.3100]	
0.75 OR 0.85mm ²	1.40 ±0.05 [0.055 ±0.002 IN]	2-354779-6 [1.3120]	
0.50mm ²	1.30 ±0.05 [0.051 ±0.002 IN]	3-354779-6 [1.3170]	



QTY	REQD	PER	ASSY	PART NO	DESCRIPTION	ITEM NO
-	1	1		1339803	PRINT, APPLICATOR LOG SHEET	73
-	1	1		1338705-2	DOCUMENTATION PACKAGE	72
						70
						68
-	1	1		461264-1	PLATE, IDENTIFICATION	67
-	2	2		21017-2	SCR,DRIVE (#2X.19) ID PLATE	66
						65
-	1	1		986950-1	WASHER, FLAT PRECISION	64
-	1	1		3-18031-0	SCR,SKT SET (M6X6) RAM	63
-	1	1		18023-9	SCR,SKT CAP (M4X6) CP DSC	62
						61
-	1	1		18024-7	SCR,BHC (M4X10) ANVIL	60
						59
-	2	2		1-18023-3	SCR,SHC (M4X16) HOLD DOWN	58
-	5	5		18023-9	SCR,SHC (M4X6) STRIP GUIDE	57
-	2	2		1-18023-4	SCR,SHC (M4X20) SLUG BLADE	56
						55
-	2	2		18029-1	NUT, HEX (M3) DRAG	54
-	2	2		986965-1	NUT, HEX SL (M4) DRAG STUD	53
-	2	2		2-18032-2	SCR,SKT SET (M3X10) DRAG	52
						51
						50
-	1	1		18024-3	SCR,BHC (M3X10) CAM	49
						48
-	1	1		1338676-1	CAM, POST-FEED 30 & 40 mm ST	47
-	1	1		1338662-1	APPLICATOR, BASIC (SUBASSY)	46
-	1	1		690191-1	PLUG, NYLON	45
-	1	1		1320998-1	RAM	44
-	1	1		690125-1	WASHER, LAMINATED	43
-	1	1		690124-1	WASHER, RAM	42
-	1	1		2-18024-6	SCREW,BHC (M8X25) CRIMPER	41
-	1	1		23241-1	BALL, STEEL	40
-	1	1		2-22278-7	SPRING, COMPRESSION	39
-	1	1		1320922-1	DISC, INSULATION	38
-	1	1		354777-1	WIRE DISC, PLASTIC	37
-	1	1		22480-5	WASHER, SPRING	36
-	1	1		690212-1	POST, RAM	35
						34
						33
-	9	9		18025-2	WASHER, LOCK (M4) SHEAR BL	32
-	2	2		4-18024-7	SCR,BHC (M4X25) SHEAR PL	31
						30
-	2	2		18024-8	SCR,BHC (M4X12) STRIPPER	29
-	1	1		3-690451-2	SPACER, STRIPPER	28
-	1	1		240639-1	STRIPPER	27
						26
-	2	2		1320906-1	DRAG, STUD	25
-	1	1		1320995-1	PLATE, STRIP GUIDE	24
-	1	1		240825-1	PLATE, STRIP HOLD DOWN	23
-	2	2		4-22281-1	SPRING, DRAG	22
						21
-	1	1		1338665-1	DRAG, STOCK	20
						19
-	2	2		1338663-5	GUIDE, LOWER STRIP	18
-	4	4		1-18024-8	SCR,BHC (M6X12) STRIP GD PL	17
-	1	1		1338708-1	SPACER, SLUG BLADE	16
						15
						14
-	1	1		690481-1	SPACER, HOLD DOWN	13
-	1	1		23846-1	SPRING, HOLD DOWN	12
-	1	1		240644-1	PLATE, REAR SHEAR	11
						10
-	1	1		690482-3	PLATE, FRONT SHEAR	9
-	1	2	1	1-1333221-9	ANVIL	8
-	1	1		690474-3	BLADE, SLUG	7
-	1	1		5-455892-2	HOLD DOWN, TERMINAL	6
-	1	1		7-240641-2	SPACER, SLUG BLADE	5
-	1	1		238009-2	SPACER, BLOCK CRIMPER	4
-	1	2	1	9-683453-3	CRIMPER, INSULATION	3
-	1	1		1-455888-5	SPACER, CRIMPER	2
-	1	2	1	1-456410-7	CRIMPER, WIRE	1
-	77	-71	-1			

- 1. RECOMMENDED SPARE PARTS.
- 2. GREASE RAM, CAM, CAM FOLLOWER AND FEED ROD LIGHTLY.
- 3. LUBRICATE DAILY PER THE APPLICATOR INSTRUCTION SHEET SUPPLIED WITH THE APPLICATOR.
- 4. CERTAIN TERMINALS REQUIRE LUBRICATION. REFER TO THE APPLICATOR INSTRUCTION SHEET FOR MORE INFORMATION.
- 5. SEE SUMITOMO SPEC. FOR SPECIFIC DETAILS OF WIRE TYPES.
- 6. 1.50mm² WIRE CRIMP HEIGHT CALCULATED BY TYCO ELECTRONICS UK LTD. ALL OTHER CRIMP DATA SUPPLIED BY TERMINAL MANUFACTURER.
- 7. CUT TO LENGTH AT ASSEMBLY.
- 8. WIRE CRIMP DATA SUPPLIED BY TERMINAL MANUFACTURER SIZES BELOW 1.50mm² ARE NOT RECOMMENDED BY TYCO ELECTRONICS UK LTD.



DIMENSIONS: mm [INCHES]		MATL	HT TR	FIN
DO NOT SCALE PRINT.				
TOLERANCES UNLESS OTHERWISE SPECIFIED:				
1	PLC DEC ±			
2	PLC DEC ±			
3	PLC DEC ±			
ANGLES ±				
SURF TEXTURE: ✓				
REMOVE BURRS, BREAK SHARP EDGES RO.38 MAX				
DR L.L.OFTHOUSE		27MAR06	APP M.C.LIFFORD	27MAR06
CHK -		REL 08MAY06	L.L.OFTHOUSE	
NAME END FEED HD-I APPLICATOR				MACHINE REF HD-I APPL
SCALE	DWG NO	1339803	SHEET 1	REV A
CAGE CODE 00779 CUSTOMER AND ASSEMBLY DRAWING				

THIS DRAWING IS A CONTROLLED DOCUMENT.

LAYOUT L1339803
SET UP GAGE 458638-3

THIS DRAWING IS UNPUBLISHED.
RELEASED FOR PUBLICATION BY AMP INCORPORATED. ALL RIGHTS RESERVED.
LOC A
D1ST 66
AMP 1756 REV 3-92
08-MAY-06 14:51:40 eb003653

C
D
C
B
A